



## UK Office

### Everest Biotech Ltd

Cherwell Innovation Centre  
77 Heyford Park  
Upper Heyford  
Oxfordshire  
OX25 5HD  
UK

Enquiries:

[info@everestbiotech.com](mailto:info@everestbiotech.com)

Sales:

[sales@everestbiotech.com](mailto:sales@everestbiotech.com)

Tech support:

[support@everestbiotech.com](mailto:support@everestbiotech.com)

Tel: +44 (0)1869 238326

[www.everestbiotech.com](http://www.everestbiotech.com)

**Research Use Only. Not for  
diagnostic or therapeutic use.**

## EB10052 - Goat Anti-PBX1 Antibody

Size: 100µg specific antibody in 200µl



### Target Protein

**Principal Names:** DKFZp686B09108, MGC126627, Pre-B cell leukemia transcription factor-1, pre-B-cell leukemia homeobox 1, pre-B-cell leukemia transcription factor 1, PBX1

**Official Symbol:** PBX1

**Accession Number(s):** NP\_002576.1

**Human GeneID(s):** [5087](#)

**Non-Human GeneID(s):** 18514 (mouse)

### Immunogen

Peptide with sequence C-ATNNSAHGSQANSPS, from the internal region of the protein sequence according to NP\_002576.1.

Please note the [peptide](#) is available for sale.

### Purification and Storage

Purified from goat serum by ammonium sulphate precipitation followed by antigen affinity chromatography using the immunizing peptide.

Supplied at 0.5 mg/ml in Tris saline, 0.02% sodium azide, pH7.3 with 0.5% bovine serum albumin.

Aliquot and store at -20°C. Minimize freezing and thawing.

### Applications Tested

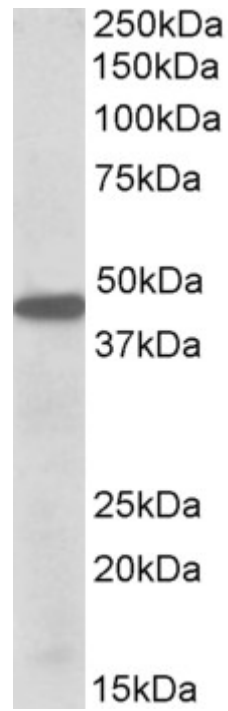
**Peptide ELISA:** antibody detection limit dilution 1:32000.

**Western blot:** Approx 45kDa band observed in lysates of cell line K562, in Mouse and Rat Eye and in Rat Uterus lysates (calculated MW of 46.6kDa according to Human NP\_002576.1). Recommended concentration: 0.3-1µg/ml.

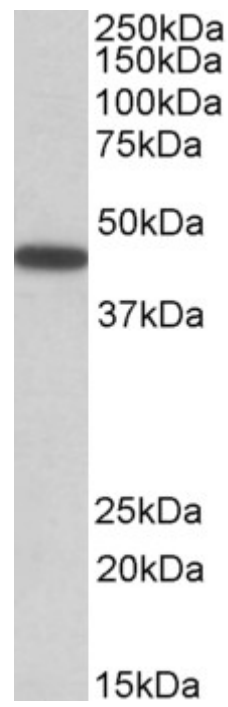
### Species Reactivity

**Tested:** Human, Mouse, Rat

**Expected from sequence similarity:** Human, Mouse, Rat, Dog



EB10052 (0.5 $\mu$ g/ml) staining of K562 lysate (35 $\mu$ g protein in RIPA buffer). Primary incubation was 1 hour. Detected by chemiluminescence.



EB10052 (0.5 $\mu$ g/ml) staining of Mouse Eye lysate (35 $\mu$ g protein in RIPA buffer). Primary incubation was 1 hour. Detected by chemiluminescence.