

## UK Office

### Everest Biotech Ltd

Cherwell Innovation Centre  
77 Heyford Park  
Upper Heyford  
Oxfordshire  
OX25 5HD  
UK

Enquiries:

[info@everestbiotech.com](mailto:info@everestbiotech.com)

Sales:

[sales@everestbiotech.com](mailto:sales@everestbiotech.com)

Tech support:

[support@everestbiotech.com](mailto:support@everestbiotech.com)

Tel: +44 (0)1869 238326

[www.everestbiotech.com](http://www.everestbiotech.com)

**Research Use Only. Not for  
diagnostic or therapeutic use.**

## EB10498 - Goat Anti-PCBP1 (aa234-247) Antibody

Size: 100µg specific antibody in 200µl



### Target Protein

**Principal Names:** alpha-CP1, heterogeneous nuclear ribonucleoprotein E1, heterogenous nuclear ribonucleoprotein E1, heterogenous nuclear ribonucleoprotein X, hnRNP-E1, hnRNP-X, HNRPE1, HNRPX, nucleic acid binding protein sub 2.3, poly(rC) binding protein 1, PCBP1

**Official Symbol:** PCBP1

**Accession Number(s):** CAA55016.1

**Human GeneID(s):** [5093](#)

**Non-Human GeneID(s):** 23983 (mouse), 500242 (rat)

### Immunogen

Peptide with sequence C-ADLAKLNQVARQQSH, from the internal region of the protein sequence according to CAA55016.1.

Please note the [peptide](#) is available for sale.

### Purification and Storage

Purified from goat serum by ammonium sulphate precipitation followed by antigen affinity chromatography using the immunizing peptide.

Supplied at 0.5 mg/ml in Tris saline, 0.02% sodium azide, pH7.3 with 0.5% bovine serum albumin.

Aliquot and store at -20°C. Minimize freezing and thawing.

### Applications Tested

**Peptide ELISA:** antibody detection limit dilution 1:32000.

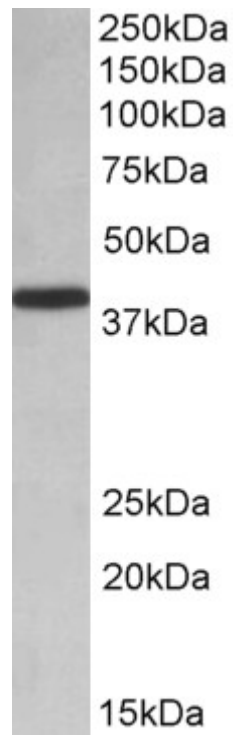
**Western blot:** Approx 38kDa band observed in lysates of cell line HeLa and in Human Placenta lysates (calculated MW of 37.5kDa according to NP\_006187.2). Recommended concentration: 0.01-0.03µg/ml.

**IHC:** Paraffin embedded Human Lung (respiratory epithelium). Recommended concentration: 5µg/ml.

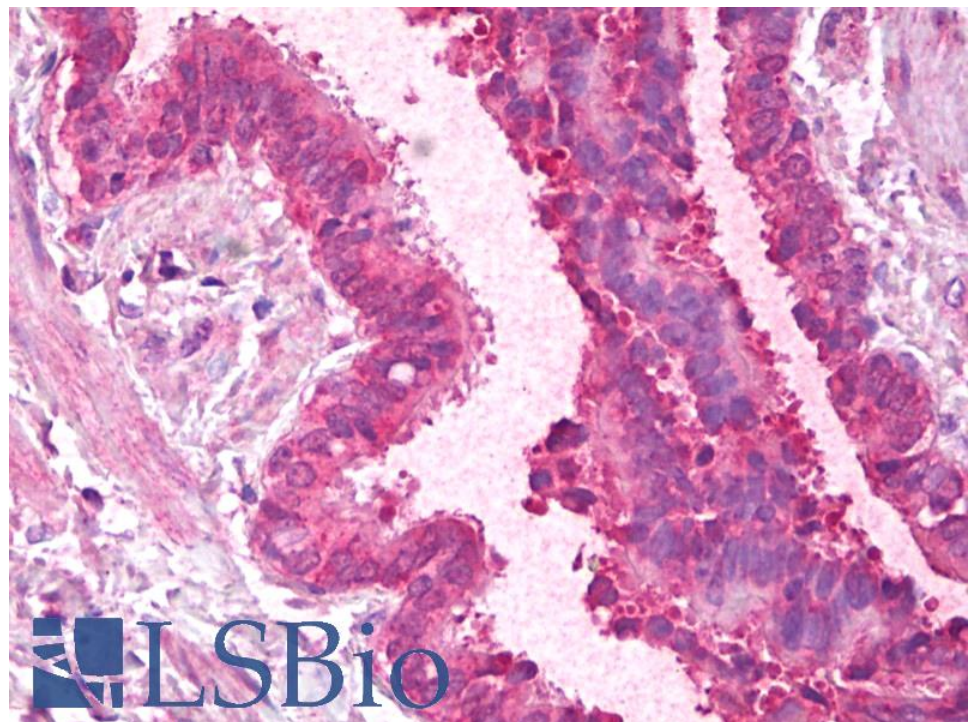
### Species Reactivity

**Tested:** Human

**Expected from sequence similarity:** Human, Mouse, Rat, Dog, Pig, Cow



EB10498 (0.01 $\mu$ g/ml) staining of HeLa lysate (35 $\mu$ g protein in RIPA buffer). Primary incubation was 1 hour. Detected by chemiluminescence.



EB10498 (5 $\mu$ g/ml) staining of paraffin embedded Human Lung. Steamed antigen retrieval with citrate buffer Ph 6, AP-staining.