

## UK Office

### Everest Biotech Ltd

Cherwell Innovation Centre  
77 Heyford Park  
Upper Heyford  
Oxfordshire  
OX25 5HD  
UK

Enquiries:

[info@everestbiotech.com](mailto:info@everestbiotech.com)

Sales:

[sales@everestbiotech.com](mailto:sales@everestbiotech.com)

Tech support:

[support@everestbiotech.com](mailto:support@everestbiotech.com)

Tel: +44 (0)1869 238326

[www.everestbiotech.com](http://www.everestbiotech.com)

**Research Use Only. Not for  
diagnostic or therapeutic use.**

## EB07927 - Goat Anti-PCBP4 Antibody

Size: 100µg specific antibody in 200µl



### Target Protein

**Principal Names:** PCBP4, poly(rC) binding protein 4, LIP4, MCG10, LYST-interacting protein, RNA binding protein MCG10, alphaCP-4 protein, poly(rC)-binding protein 4, alpha CP-4

**Official Symbol:** PCBP4

**Accession Number(s):** NP\_065151.1; NP\_127501.1; NP\_127502.1; NP\_127503.1

**Human GeneID(s):** [57060](#)

**Non-Human GeneID(s):** 59092 (mouse), 363133 (rat)

**Important Comments:** This antibody is expected to recognise all reported isoforms (NP\_065151.1, NP\_127501.1, NP\_127502.1 and NP\_127503.1).

### Immunogen

Peptide with sequence C-NGSKKAERQKFSPY, from the C Terminus of the protein sequence according to NP\_065151.1; NP\_127501.1; NP\_127502.1; NP\_127503.1 .

Please note the [peptide](#) is available for sale.

### Purification and Storage

Purified from goat serum by ammonium sulphate precipitation followed by antigen affinity chromatography using the immunizing peptide.

Supplied at 0.5 mg/ml in Tris saline, 0.02% sodium azide, pH7.3 with 0.5% bovine serum albumin.

Aliquot and store at -20°C. Minimize freezing and thawing.

### Applications Tested

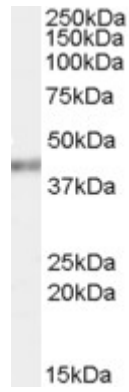
**Peptide ELISA:** antibody detection limit dilution 1:128000.

**Western blot:** Approx. 40kDa band observed in lysates of cell line HeLa (calculated MW of 41.4kDa according to NP\_127502.1 and NP\_127503.1). In transfected HEK293 transiently expressing PCBP4 a band of approx. 45kDa is observed. This band is not observed in the non-transfected HEK293. Recommended concentration: 1-3µg/ml.

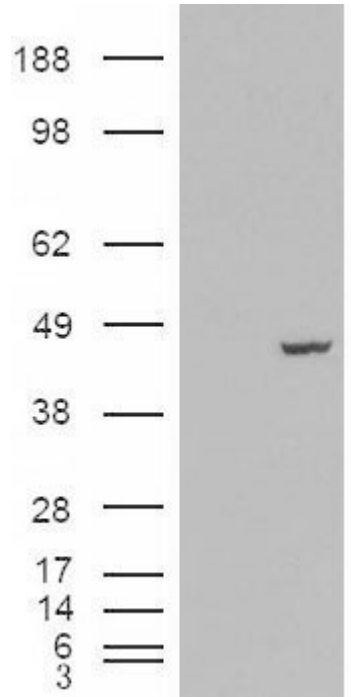
### Species Reactivity

**Tested:** Human

**Expected from sequence similarity:** Human, Mouse, Rat, Dog



EB07927 (0.03 $\mu$ g/ml) staining of HeLa cell lysate (35 $\mu$ g protein in RIPA buffer). Primary incubation was 1 hour.  
Detected by chemiluminescence.



HEK293 overexpressing PCBP4 (RC200749) and probed with EB07927 (mock transfection in first lane), tested by Origene.