



## UK Office

### Everest Biotech Ltd

Cherwell Innovation Centre  
77 Heyford Park  
Upper Heyford  
Oxfordshire  
OX25 5HD  
UK

Enquiries:

[info@everestbiotech.com](mailto:info@everestbiotech.com)

Sales:

[sales@everestbiotech.com](mailto:sales@everestbiotech.com)

Tech support:

[support@everestbiotech.com](mailto:support@everestbiotech.com)

Tel: +44 (0)1869 238326

Fax: +44 (0)1869 238327

## US Office

### Everest Biotech c/o Abcore

405 Maple Street, Suite A106  
Ramona,  
CA 92065  
USA

Inquiries:

[info@everestbiotech.com](mailto:info@everestbiotech.com)

Sales:

[usasales@everestbiotech.com](mailto:usasales@everestbiotech.com)

Tech support:

[support@everestbiotech.com](mailto:support@everestbiotech.com)

Tel: 888-320-4628 (toll-free)

Fax: 888-841-9041

[www.everestbiotech.com](http://www.everestbiotech.com)

**Research Use Only. Not for  
diagnostic or therapeutic use.**

## EB09719 - Goat Anti-PCDH11Y / PCDH11X Antibody

Size: 100µg specific antibody in 200µl



### Target Protein

**Principal Names:** PCDH11Y, protocadherin 11 Y-linked, PCDH-PC, PCDH11X, PCDH22, PCDHY, OTTHUMP00000033077, protocadherin 11 X-linked, protocadherin 22, protocadherin Y, RP13-138P15.1, PCDH-X, PCDH11, PCDHX, protocadherin 11X, protocadherin X, protocadherin-S

**Official Symbol:** PCDH11Y

**Accession Number(s):** NP\_116753.1; NP\_116754.1; NP\_116755.1; NP\_055337.1; NP\_055337.1; NP\_116750.1; NP\_116751.1

**Human GenelD(s):** [83259](#) , [27328](#)

**Important Comments:** This antibody is expected to recognize all reported Y-linked isoforms (NP\_116753.1; NP\_116754.1; NP\_116755.1) and all reported X-linked isoforms (NP\_055337.1; NP\_055337.1; NP\_116750.1; NP\_116751.1).

### Immunogen

Peptide with sequence C-KYNWVTPTTFK, from the internal region of the protein sequence according to NP\_116753.1; NP\_116754.1; NP\_116755.1; NP\_055337.1; NP\_055337.1; NP\_116750.1; NP\_116751.1.

Please note the [peptide](#) is available for sale.

### Purification and Storage

Purified from goat serum by ammonium sulphate precipitation followed by antigen affinity chromatography using the immunizing peptide.

Supplied at 0.5 mg/ml in Tris saline, 0.02% sodium azide, pH7.3 with 0.5% bovine serum albumin.

Aliquot and store at -20°C. Minimize freezing and thawing.

### Applications Tested

**Peptide ELISA:** antibody detection limit dilution 1:8000.

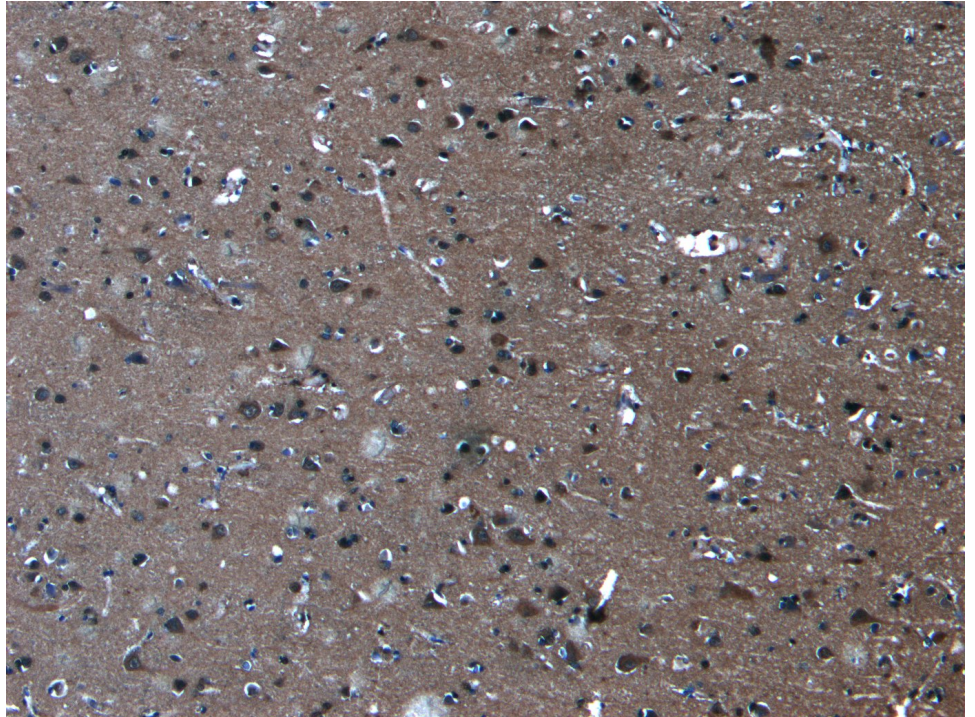
**Western blot:** Preliminary experiments gave an approx 75kDa band in Human Brain (Amygdala, Hippocampus, Substantia nigra) lysates after 1µg/ml antibody staining. Please note that currently we cannot find an explanation in the literature for the band we observe given the calculated size of 115kDa according to NP\_116753.1 and of 113kDa according to NP\_055337.1, the smallest reported isoforms. The 75kDa band was successfully blocked by incubation with the immunizing peptide.

**IHC:** Paraffin embedded Human Brain (Cortex). Recommended concentration: 6µg/ml.

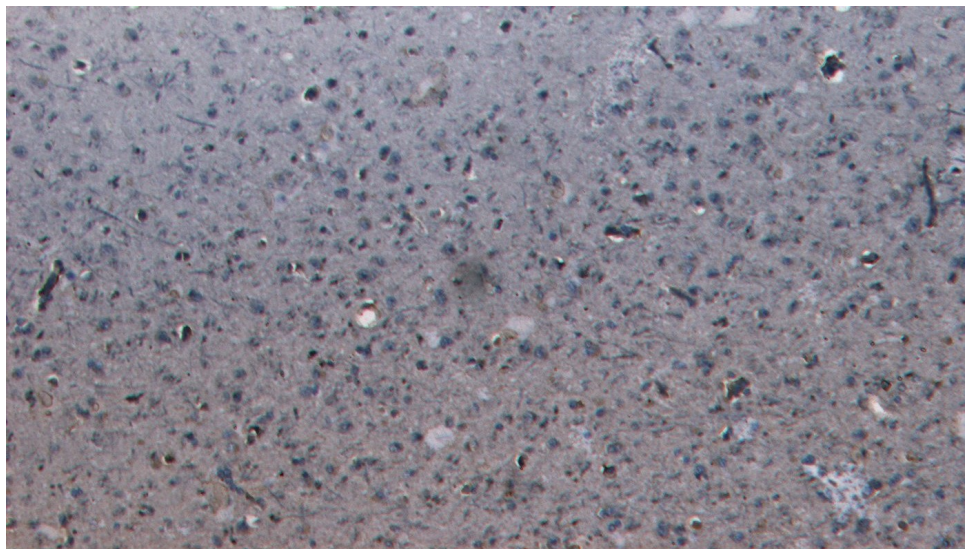
### Species Reactivity

**Tested:** Human

**Expected from sequence similarity:** Human



EB09719 (6 $\mu$ g/ml) staining of paraffin embedded Human Cortex. Heat induced antigen retrieval with citrate buffer pH 6, HRP-staining.



EB09719 Negative Control showing staining of paraffin embedded Human Cortex, with no primary antibody.