



## UK Office

### Everest Biotech Ltd

Cherwell Innovation Centre  
77 Heyford Park  
Upper Heyford  
Oxfordshire  
OX25 5HD  
UK

Enquiries:

[info@everestbiotech.com](mailto:info@everestbiotech.com)

Sales:

[sales@everestbiotech.com](mailto:sales@everestbiotech.com)

Tech support:

[support@everestbiotech.com](mailto:support@everestbiotech.com)

Tel: +44 (0)1869 238326

Fax: +44 (0)1869 238327

## US Office

### Everest Biotech c/o Abcore

405 Maple Street, Suite A106  
Ramona,  
CA 92065  
USA

Inquiries:

[info@everestbiotech.com](mailto:info@everestbiotech.com)

Sales:

[usasales@everestbiotech.com](mailto:usasales@everestbiotech.com)

Tech support:

[support@everestbiotech.com](mailto:support@everestbiotech.com)

Tel: 888-320-4628 (toll-free)

Fax: 888-841-9041

[www.everestbiotech.com](http://www.everestbiotech.com)

**Research Use Only. Not for  
diagnostic or therapeutic use.**

## EB06943 - Goat Anti-PCK1 / PEPCKC (internal) Antibody

Size: 100µg specific antibody in 200µl



### Target Protein

**Principal Names:** PCK1, phosphoenolpyruvate carboxykinase 1 (soluble), HGNC:8724, MGC22652, PEPCK1, PEPCKC, PEP carboxykinase, cytosolic phosphoenolpyruvate carboxykinase 1, phosphoenolpyruvate carboxylase, phosphopyruvate carboxylase, PEPCK-C

**Official Symbol:** PCK1

**Accession Number(s):** NP\_002582.3

**Human GeneID(s):** [5105](#)

### Immunogen

Peptide with sequence C-HVNWFRKDKEGK, from the internal region of the protein sequence according to NP\_002582.3.

Please note the [peptide](#) is available for sale.

### Purification and Storage

Purified from goat serum by ammonium sulphate precipitation followed by antigen affinity chromatography using the immunizing peptide.

Supplied at 0.5 mg/ml in Tris saline, 0.02% sodium azide, pH7.3 with 0.5% bovine serum albumin.

Aliquot and store at -20°C. Minimize freezing and thawing.

### Applications Tested

**Peptide ELISA:** antibody detection limit dilution 1:8000.

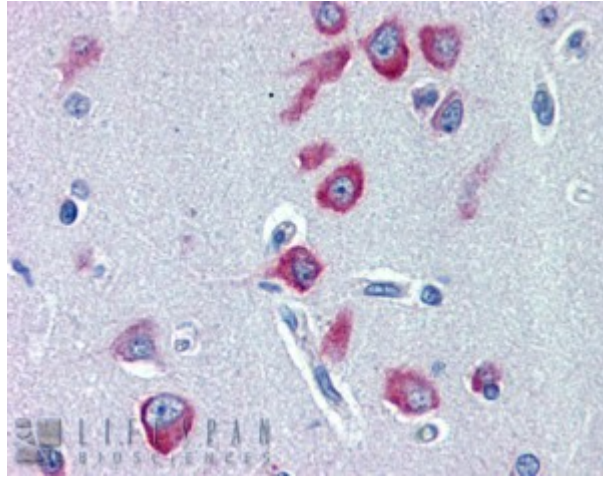
**Western blot:** Preliminary experiments gave bands at approx 70kDa, 45kDa and 28kDa in Human Adipose, Kidney and Liver lysates after 0.3 µg/ml antibody staining. Please note that currently we cannot find an explanation in the literature for the additional bands we observe given the calculated size of 69.2 kDa according to NP\_002582.2. All three detected bands were successfully blocked by incubation with the immunizing peptide (and BLAST results with the immunizing peptide sequence did not identify any other proteins to explain the additional bands).

**IHC:** Paraffin embedded Human Cerebral Cortex, Kidney and Liver. Recommended concentration: 2µg/ml.

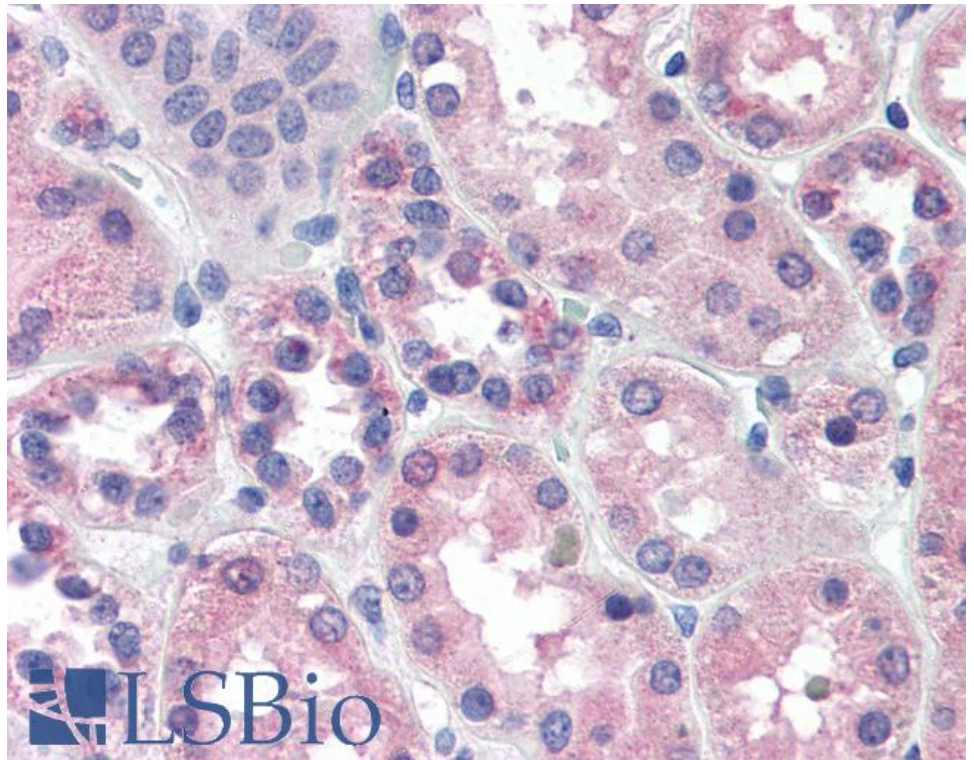
### Species Reactivity

**Tested:** Human

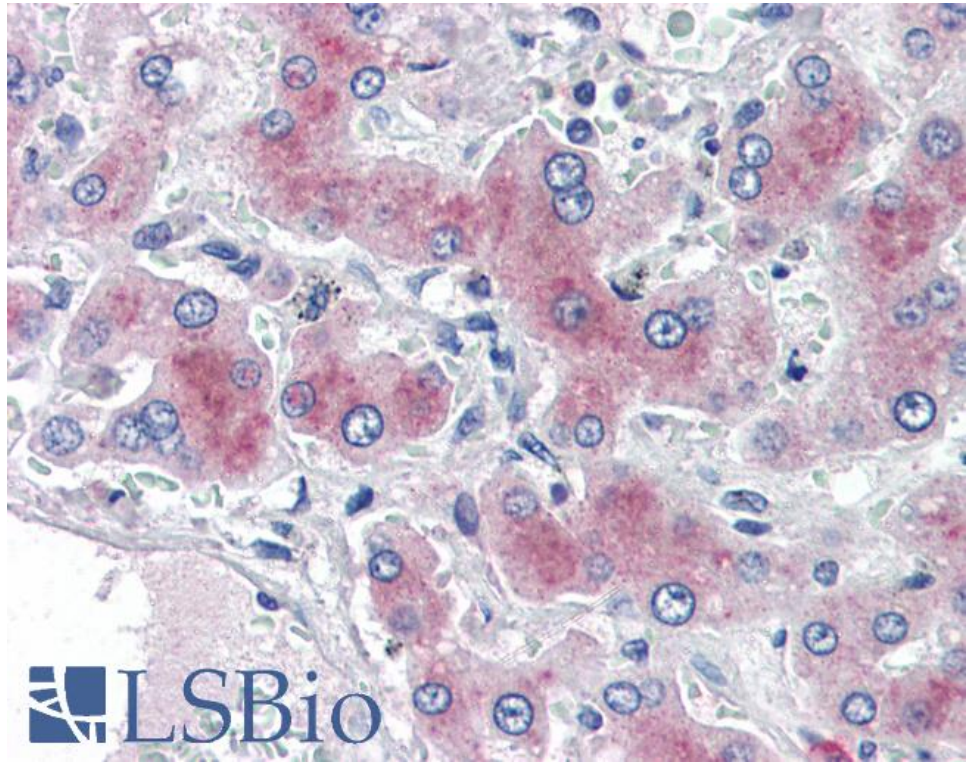
**Expected from sequence similarity:** Human, Mouse, Rat, Dog, Pig, Cow



EB06943 (2µg/ml) staining of paraffin embedded Human Cerebral Cortex. Steamed antigen retrieval with citrate buffer pH 6, AP-staining.



EB06943 (2µg/ml) staining of paraffin embedded Human Kidney. Steamed antigen retrieval with citrate buffer pH 6, AP-staining.



EB06943 (2µg/ml) staining of paraffin embedded Human Liver. Steamed antigen retrieval with citrate buffer pH 6, AP-staining.