



UK Office

Everest Biotech Ltd

Cherwell Innovation Centre
77 Heyford Park
Upper Heyford
Oxfordshire
OX25 5HD
UK

Enquiries:

info@everestbiotech.com

Sales:

sales@everestbiotech.com

Tech support:

support@everestbiotech.com

Tel: +44 (0)1869 238326

Fax: +44 (0)1869 238327

US Office

Everest Biotech c/o Abcore

405 Maple Street, Suite A106
Ramona,
CA 92065
USA

Inquiries:

info@everestbiotech.com

Sales:

usasales@everestbiotech.com

Tech support:

support@everestbiotech.com

Tel: 888-320-4628 (toll-free)

Fax: 888-841-9041

www.everestbiotech.com

**Research Use Only. Not for
diagnostic or therapeutic use.**

EB11815 - Goat Anti-PCOLCE Antibody

Size: 100µg specific antibody in 200µl



Target Protein

Principal Names: OTTHUMP00000210409, PCOLCE, PCPE, PCPE1, PCPE-1, procollagen C-endopeptidase enhancer, procollagen C-endopeptidase enhancer 1, procollagen COOH-terminal proteinase enhancer 1, procollagen C-proteinase enhancer 1, procollagen, type 1, COOH-terminal proteinase enhancer, type 1 procollagen C-proteinase enhancer protein, type I procollagen COOH-terminal proteinase enhancer

Official Symbol: PCOLCE

Accession Number(s): NP_002584.2

Human GeneID(s): [5118](#)

Immunogen

Peptide with sequence QILTNL SKRK CPSQP, from the C Terminus of the protein sequence according to NP_002584.2.

Please note the [peptide](#) is available for sale.

Purification and Storage

Purified from goat serum by ammonium sulphate precipitation followed by antigen affinity chromatography using the immunizing peptide.

Supplied at 0.5 mg/ml in Tris saline, 0.02% sodium azide, pH7.3 with 0.5% bovine serum albumin.

Aliquot and store at -20°C. Minimize freezing and thawing.

Applications Tested

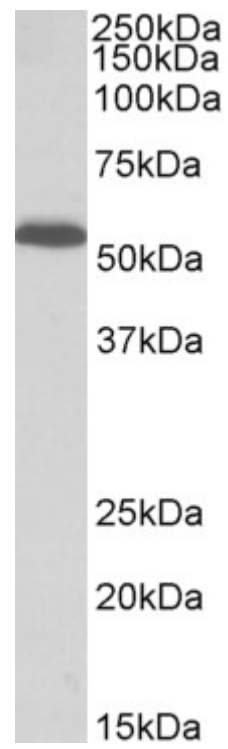
Peptide ELISA: antibody detection limit dilution 1:128000.

Western blot: Approx 55kDa band observed in Human Skin and Umbilical Cord lysates (calculated MW of 48.0kDa according to NP_002584.2). Recommended concentration: 0.3-1µg/ml.

Species Reactivity

Tested: Human

Expected from sequence similarity: Human, Dog



EB11815 (0.3 μ g/ml) staining of Human Skin lysate (35 μ g protein in RIPA buffer). Primary incubation was 1 hour.
Detected by chemiluminescence.