



## UK Office

### Everest Biotech Ltd

Cherwell Innovation Centre  
77 Heyford Park  
Upper Heyford  
Oxfordshire  
OX25 5HD  
UK

Enquiries:

[info@everestbiotech.com](mailto:info@everestbiotech.com)

Sales:

[sales@everestbiotech.com](mailto:sales@everestbiotech.com)

Tech support:

[support@everestbiotech.com](mailto:support@everestbiotech.com)

Tel: +44 (0)1869 238326

Fax: +44 (0)1869 238327

## US Office

### Everest Biotech c/o Abcore

405 Maple Street, Suite A106  
Ramona,  
CA 92065  
USA

Inquiries:

[info@everestbiotech.com](mailto:info@everestbiotech.com)

Sales:

[usasales@everestbiotech.com](mailto:usasales@everestbiotech.com)

Tech support:

[support@everestbiotech.com](mailto:support@everestbiotech.com)

Tel: 888-320-4628 (toll-free)

Fax: 888-841-9041

[www.everestbiotech.com](http://www.everestbiotech.com)

**Research Use Only. Not for  
diagnostic or therapeutic use.**

## EB09134 - Goat Anti-PCSK9 (aa214-228) Antibody

Size: 100µg specific antibody in 200µl



### Target Protein

**Principal Names:** PCSK9, proprotein convertase subtilisin/kexin type 9, FH3, HCHOLA3, LDLQCQ1, NARC-1, NARC1, OTTHUMP00000009833, convertase subtilisin/kexin type 9 preproprotein, hypercholesterolemia, autosomal dominant 3, neural apoptosis regulated convertase 1

**Official Symbol:** PCSK9

**Accession Number(s):** NP\_777596.2

**Human GeneID(s):** [255738](#)

### Immunogen

Peptide with sequence TRFHRQASKCDSHGT, from the internal region of the protein sequence according to NP\_777596.2.

Please note the [peptide](#) is available for sale.

### Purification and Storage

Purified from goat serum by ammonium sulphate precipitation followed by antigen affinity chromatography using the immunizing peptide.

Supplied at 0.5 mg/ml in Tris saline, 0.02% sodium azide, pH7.3 with 0.5% bovine serum albumin.

Aliquot and store at -20°C. Minimize freezing and thawing.

### Applications Tested

**Peptide ELISA:** antibody detection limit dilution 1:16000.

**Western blot:** Approx 70-75kDa band observed in HepG2 cell lysates and approx 75kDa in HeLa cell lysates (calculated MW of 74.3kDa according to NP\_777596.2)..

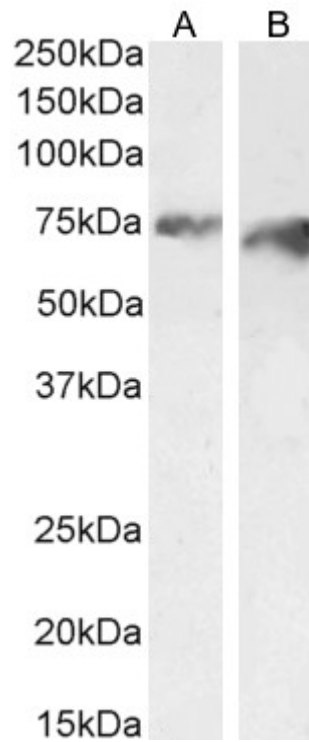
Recommended concentration: 1-2g/ml. Primary incubation 1 hour at room temperature.

**Flow Cytometry:** Flow cytometric analysis of HeLa cells. Recommended concentration: 10ug/ml.

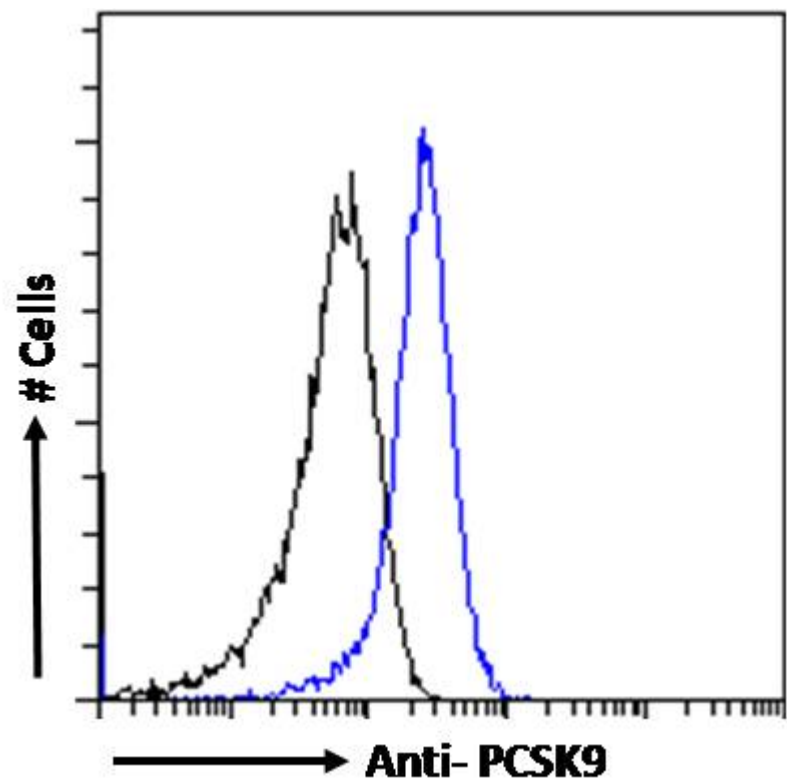
### Species Reactivity

**Tested:** Human

**Expected from sequence similarity:** Human, Mouse, Rat



EB09134 (2 $\mu$ g/ml) staining of HeLa (A) and (1 $\mu$ g/ml) of HepG2 (B) cell lysate (35 $\mu$ g protein in RIPA buffer).  
Detected by chemiluminescence.



EB09134 Flow cytometric analysis of paraformaldehyde fixed HeLa cells (blue line), permeabilized with 0.5% Triton. Primary incubation 1hr (10 $\mu$ g/ml) followed by Alexa Fluor 488 secondary antibody (1 $\mu$ g/ml). IgG control: Unimmunized goat IgG (black line) followed by Alexa Fluor 488 secondary antibody.