



## UK Office

### Everest Biotech Ltd

Cherwell Innovation Centre  
77 Heyford Park  
Upper Heyford  
Oxfordshire  
OX25 5HD  
UK

Enquiries:

[info@everestbiotech.com](mailto:info@everestbiotech.com)

Sales:

[sales@everestbiotech.com](mailto:sales@everestbiotech.com)

Tech support:

[support@everestbiotech.com](mailto:support@everestbiotech.com)

Tel: +44 (0)1869 238326

Fax: +44 (0)1869 238327

## US Office

### Everest Biotech c/o Abcore

405 Maple Street, Suite A106  
Ramona,  
CA 92065  
USA

Inquiries:

[info@everestbiotech.com](mailto:info@everestbiotech.com)

Sales:

[usasales@everestbiotech.com](mailto:usasales@everestbiotech.com)

Tech support:

[support@everestbiotech.com](mailto:support@everestbiotech.com)

Tel: 888-320-4628 (toll-free)

Fax: 888-841-9041

[www.everestbiotech.com](http://www.everestbiotech.com)

**Research Use Only. Not for  
diagnostic or therapeutic use.**

## EB06682-T - Goat Anti-PCSK9 (C Terminus) Antibody - Trial

Size: 20µg specific antibody in 40µl



### Target Protein

**Principal Names:** PCSK9, FH3, NARC1, HCHOLA3, proprotein convertase subtilisin/kexin type 9, neural apoptosis regulated convertase 1, hypercholesterolemia, autosomal dominant 3, proprotein convertase subtilisin/kexin type 9, LDLQC1, NARC-1

**Official Symbol:** PCSK9

**Accession Number(s):** NP\_777596.2

**Human GeneID(s):** [255738](#)

### Immunogen

Peptide with sequence CRSRHQAQASQELQ, from the C Terminus of the protein sequence according to NP\_777596.2.

Please note the [peptide](#) is available for sale.

### Purification and Storage

Purified from goat serum by ammonium sulphate precipitation followed by antigen affinity chromatography using the immunizing peptide.

Supplied at 0.5 mg/ml in Tris saline, 0.02% sodium azide, pH7.3 with 0.5% bovine serum albumin.

Aliquot and store at -20°C. Minimize freezing and thawing.

### Applications Tested

**Peptide ELISA:** antibody detection limit dilution 1:16000.

**Western blot:** Approx 75kDa band observed in Human Adipose lysates (calculated MW of 74.3kDa according to NP\_777596.2). Recommended concentration: 0.3-1µg/ml.

Primary incubation was 1 hour. Constructs and lysates were as described in Sun et al Hum Mol Genet. 2005 May 1;14(9):1161-9, PMID: 15772090. A customer found positive results in WB on Human Liver.

**IHC:** Paraffin embedded Human Liver. Recommended concentration: 5-6µg/ml.

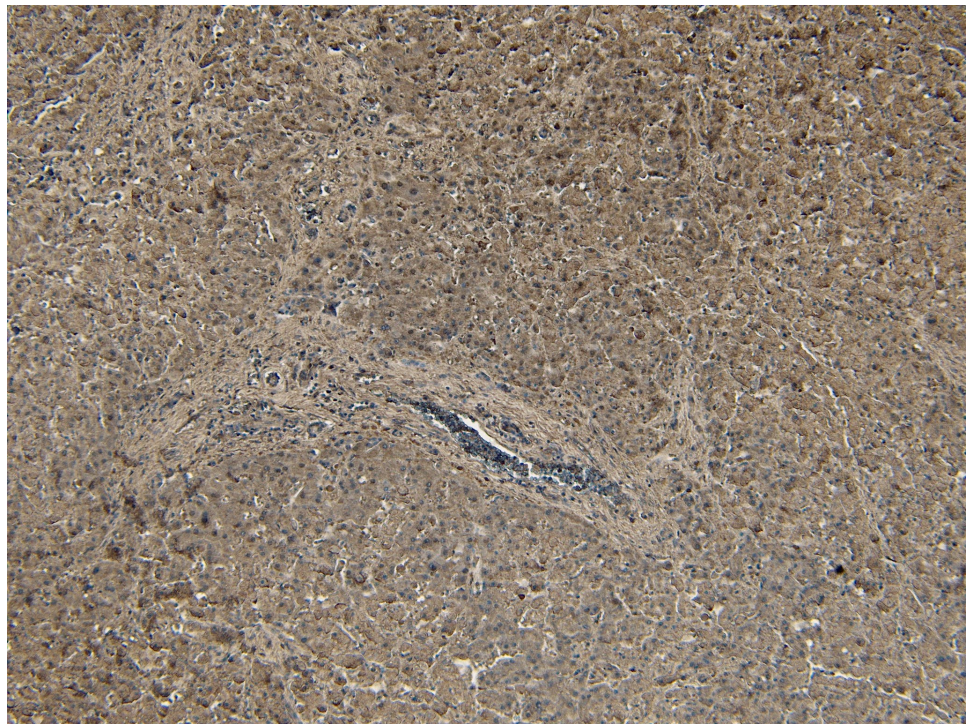
### Species Reactivity

**Tested:** Human

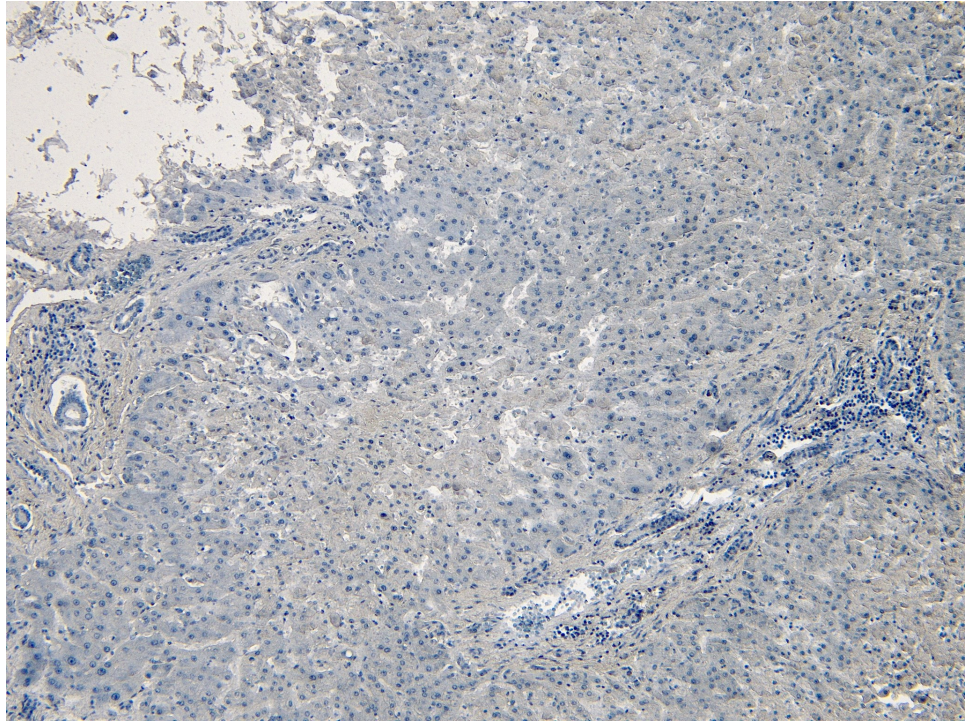
**Expected from sequence similarity:** Human



EB06682 (0.3 $\mu$ g/ml) staining of Human Adipose lysate (35 $\mu$ g protein in RIPA buffer). Detected by chemiluminescence.



EB06682 (5 $\mu$ g/ml) staining of paraffin embedded Human Liver. Heat induced antigen retrieval with citrate buffer pH 6, HRP-staining.



EB06682 Negative Control showing staining of paraffin embedded Human Liver, with no primary antibody.