

## UK Office

### Everest Biotech Ltd

Cherwell Innovation Centre  
77 Heyford Park  
Upper Heyford  
Oxfordshire  
OX25 5HD  
UK

Enquiries:

[info@everestbiotech.com](mailto:info@everestbiotech.com)

Sales:

[sales@everestbiotech.com](mailto:sales@everestbiotech.com)

Tech support:

[support@everestbiotech.com](mailto:support@everestbiotech.com)

Tel: +44 (0)1869 238326

[www.everestbiotech.com](http://www.everestbiotech.com)

**Research Use Only. Not for  
diagnostic or therapeutic use.**

## EB11583 - Goat Anti-PDCD4 (aa210-221) Antibody

Size: 100µg specific antibody in 200µl



### Target Protein

**Principal Names:** H731, MGC33046, MGC33047, neoplastic transformation inhibitor protein, nuclear antigen H731, OTTHUMP00000020483, PDCD4, programmed cell death 4 (neoplastic transformation inhibitor), programmed cell death protein 4, protein 197/15a

**Official Symbol:** PDCD4

**Accession Number(s):** NP\_055271.2; NP\_663314.1; NP\_001186421.1

**Human GeneID(s):** [27250](#)

**Non-Human GeneID(s):** 18569 (mouse), 64031 (rat)

**Important Comments:** This antibody is expected to recognize all reported isoforms (NP\_055271.2; NP\_663314.1; NP\_001186421.1).

### Immunogen

Peptide with sequence C-EGKASHREMTSK, from the internal region of the protein sequence according to NP\_055271.2; NP\_663314.1; NP\_001186421.1.

Please note the [peptide](#) is available for sale.

### Purification and Storage

Purified from goat serum by ammonium sulphate precipitation followed by antigen affinity chromatography using the immunizing peptide.

Supplied at 0.5 mg/ml in Tris saline, 0.02% sodium azide, pH7.3 with 0.5% bovine serum albumin.

Aliquot and store at -20°C. Minimize freezing and thawing.

### Applications Tested

**Peptide ELISA:** antibody detection limit dilution 1:128000.

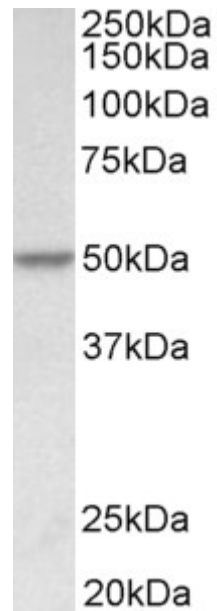
**Western blot:** Approx 50kDa band observed in lysates of cell line HeLa (calculated MW of 50.2kDa according to NP\_001186421.1). Recommended concentration: 0.1-0.3µg/ml.

**IHC:** Paraffin embedded Human Prostate. Recommended concentration: 5µg/ml.

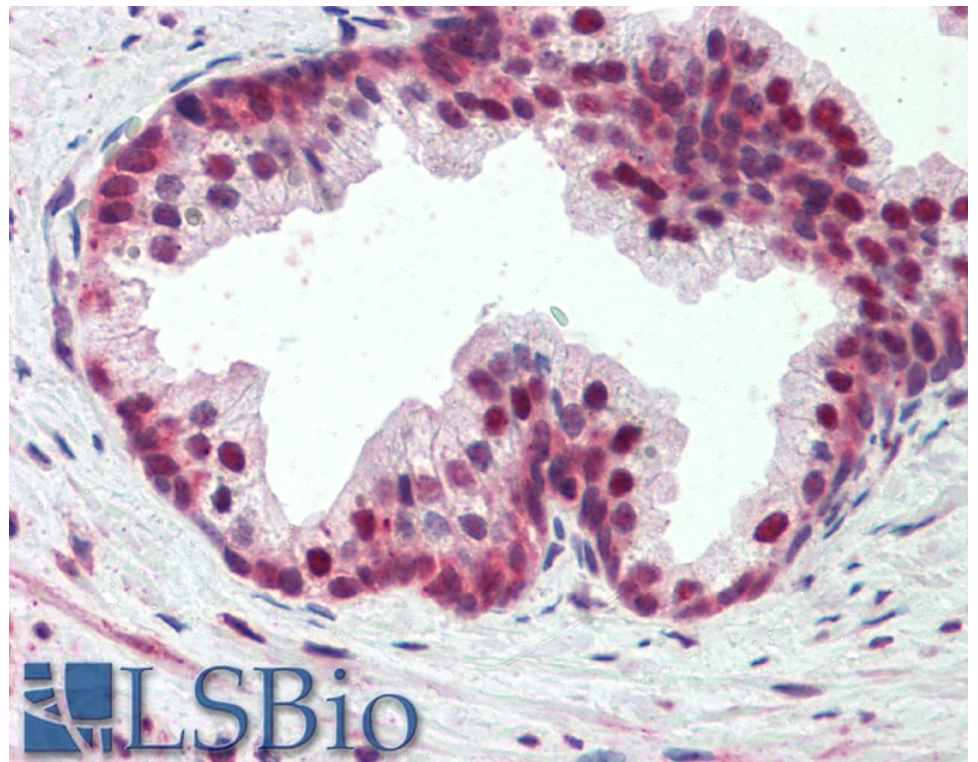
### Species Reactivity

**Tested:** Human

**Expected from sequence similarity:** Human, Mouse, Rat, Dog, Pig, Cow



EB11583 (0.1 $\mu$ g/ml) staining of HeLa lysate (35 $\mu$ g protein in RIPA buffer). Primary incubation was 1 hour. Detected by chemiluminescence.



EB11583 (5 $\mu$ g/ml) staining of paraffin embedded Human Prostate. Steamed antigen retrieval with citrate buffer pH 6, AP-staining.