



UK Office

Everest Biotech Ltd

Cherwell Innovation Centre
77 Heyford Park
Upper Heyford
Oxfordshire
OX25 5HD
UK

Enquiries:

info@everestbiotech.com

Sales:

sales@everestbiotech.com

Tech support:

support@everestbiotech.com

Tel: +44 (0)1869 238326

Fax: +44 (0)1869 238327

US Office

Everest Biotech c/o Abcore

405 Maple Street, Suite A106
Ramona,
CA 92065
USA

Inquiries:

info@everestbiotech.com

Sales:

usasales@everestbiotech.com

Tech support:

support@everestbiotech.com

Tel: 888-320-4628 (toll-free)

Fax: 888-841-9041

www.everestbiotech.com

**Research Use Only. Not for
diagnostic or therapeutic use.**

EB06645 - Goat Anti-PDE5A Antibody

Size: 100µg specific antibody in 200µl



Target Protein

Principal Names: PDE5A, CN5A, PDE5, PDE5A1, CGB-PDE, phosphodiesterase 5A, cGMP-specific, cGMP-binding cGMP-specific 3',5'-cyclic nucleotide phosphodiesterase

Official Symbol: PDE5A

Accession Number(s): NP_001074.2; NP_246273.2; NP_236914.2; (NP_237223)

Human GeneID(s): [8654](#)

Important Comments: This antibody is expected to recognise reported isoforms NP_001074.2, NP_236914.2 and NP_246273.2.

Immunogen

Peptide with sequence C-LINGESGQAKRN, from the C Terminus of the protein sequence according to NP_001074.2; NP_246273.2; NP_236914.2; (NP_237223).

Please note the [peptide](#) is available for sale.

Purification and Storage

Purified from goat serum by ammonium sulphate precipitation followed by antigen affinity chromatography using the immunizing peptide.

Supplied at 0.5 mg/ml in Tris saline, 0.02% sodium azide, pH7.3 with 0.5% bovine serum albumin.

Aliquot and store at -20°C. Minimize freezing and thawing.

Applications Tested

Peptide ELISA: antibody detection limit dilution 1:16000.

Western blot: In transfected HEK293 transiently expressing PDE5A isoform 2 a band of approx. 95kDa is observed. This band is not observed in the non-transfected HEK293 (calculated MW of 94.8kDa according to isoform 2, NP_236914.2). Recommended concentration: 0.3-1µg/ml.

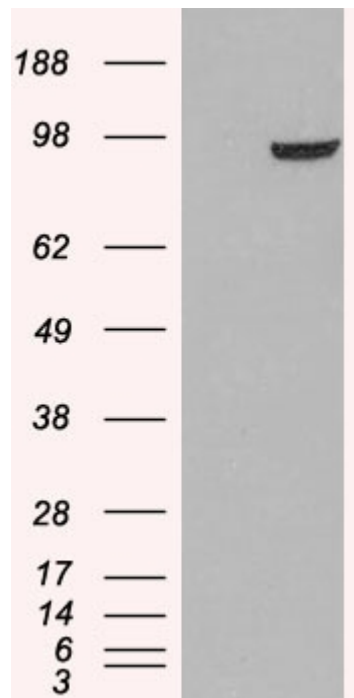
Immunofluorescence: Strong expression of the protein seen in the cytoplasm of HeLa cells. Recommended concentration: 10µg/ml.

Flow Cytometry: Flow cytometric analysis of HEK293 cells. Recommended concentration: 10ug/ml.

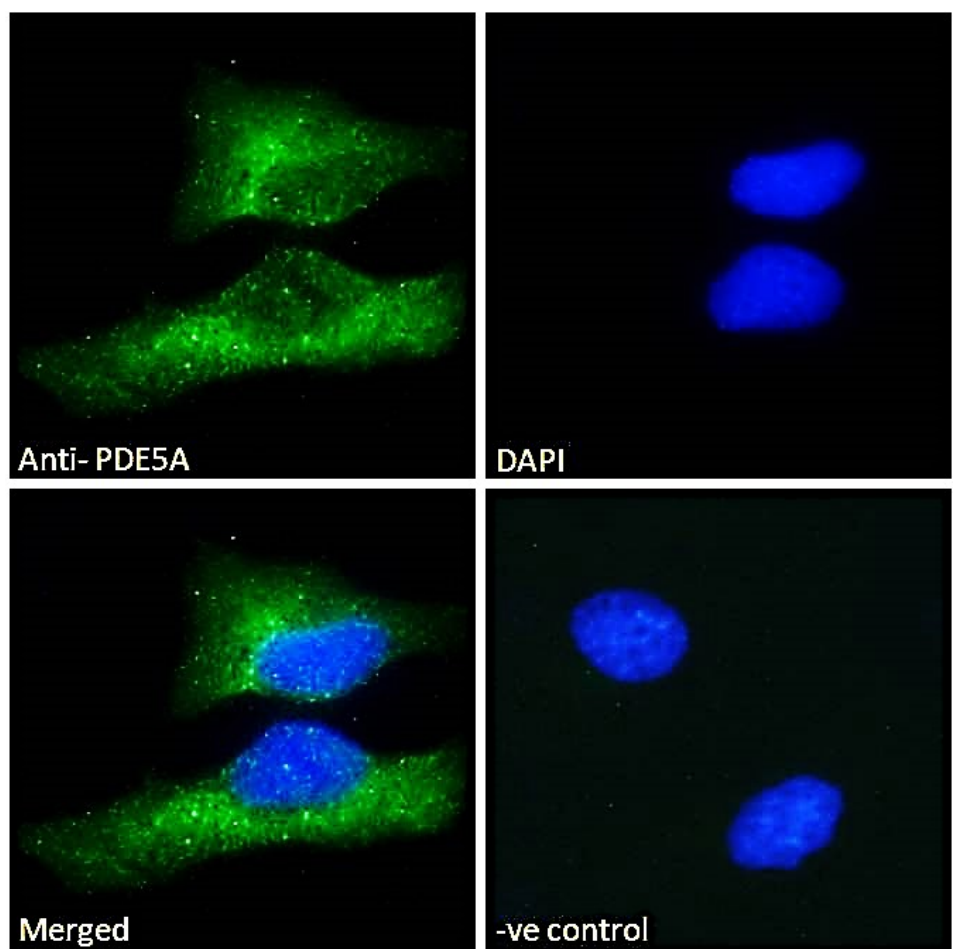
Species Reactivity

Tested: Human

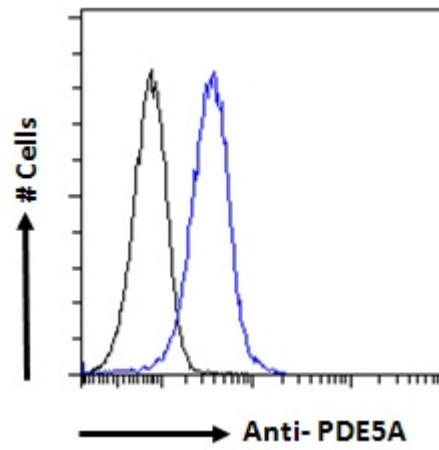
Expected from sequence similarity: Human, Rat, Dog, Cow



HEK293 overexpressing PDE5A (RC218974) and probed with EB06645 (mock transfection in first lane), tested by Origene.



EB06645 Immunofluorescence analysis of paraformaldehyde fixed HeLa cells, permeabilized with 0.15% Triton. Primary incubation 1hr (10ug/ml) followed by Alexa Fluor 488 secondary antibody (2ug/ml), showing cytoplasmic staining. The nuclear stain is DAPI (blue). Negative control: Unimmunized goat IgG (10ug/ml) followed by Alexa Fluor 488 secondary antibody (2ug/ml).



EB06645 Flow cytometric analysis of paraformaldehyde fixed HEK293 cells (blue line), permeabilized with 0.5% Triton. Primary incubation 1hr (10ug/ml) followed by Alexa Fluor 488 secondary antibody (1ug/ml). IgG control: Unimmunized goat IgG (black line) followed by Alexa Fluor 488 secondary antibody.