



UK Office

Everest Biotech Ltd

Cherwell Innovation Centre
77 Heyford Park
Upper Heyford
Oxfordshire
OX25 5HD
UK

Enquiries:

info@everestbiotech.com

Sales:

sales@everestbiotech.com

Tech support:

support@everestbiotech.com

Tel: +44 (0)1869 238326

Fax: +44 (0)1869 238327

US Office

Everest Biotech c/o Abcore

405 Maple Street, Suite A106
Ramona,
CA 92065
USA

Inquiries:

info@everestbiotech.com

Sales:

usasales@everestbiotech.com

Tech support:

support@everestbiotech.com

Tel: 888-320-4628 (toll-free)

Fax: 888-841-9041

www.everestbiotech.com

**Research Use Only. Not for
diagnostic or therapeutic use.**

EB09553 - Goat Anti-PDGFB precursor Antibody

Size: 100µg specific antibody in 200µl



Target Protein

Principal Names: PDGFB, platelet-derived growth factor beta polypeptide (simian sarcoma viral (v-sis) oncogene homolog), FLJ12858, PDGF2, SIS, SSV, c-sis, PDGF, B chain, Platelet-derived growth factor, beta polypeptide (oncogene SIS), becaplermin, oncogene SIS, platelet-derived growth factor 2, platelet-derived growth factor beta, platelet-derived growth factor, B chain, v-sis platelet-derived growth factor beta polypeptide (simian sarcoma viral oncogene homolog)

Official Symbol: PDGFB

Accession Number(s): NP_002599.1; NP_148937.1

Human GeneID(s): [5155](#)

Non-Human GeneID(s): 18591 (mouse), 24628 (rat)

Important Comments: This antibody is expected to recognize isoform 1 and 2 (NP_002599.1; NP_148937.1).

Immunogen

Peptide with sequence C-KHRKFKHTHDKT, from the C Terminus of the protein sequence according to NP_002599.1; NP_148937.1.

Please note the [peptide](#) is available for sale.

Purification and Storage

Purified from goat serum by ammonium sulphate precipitation followed by antigen affinity chromatography using the immunizing peptide.

Supplied at 0.5 mg/ml in Tris saline, 0.02% sodium azide, pH7.3 with 0.5% bovine serum albumin.

Aliquot and store at -20°C. Minimize freezing and thawing.

Applications Tested

Peptide ELISA: antibody detection limit dilution 1:128000.

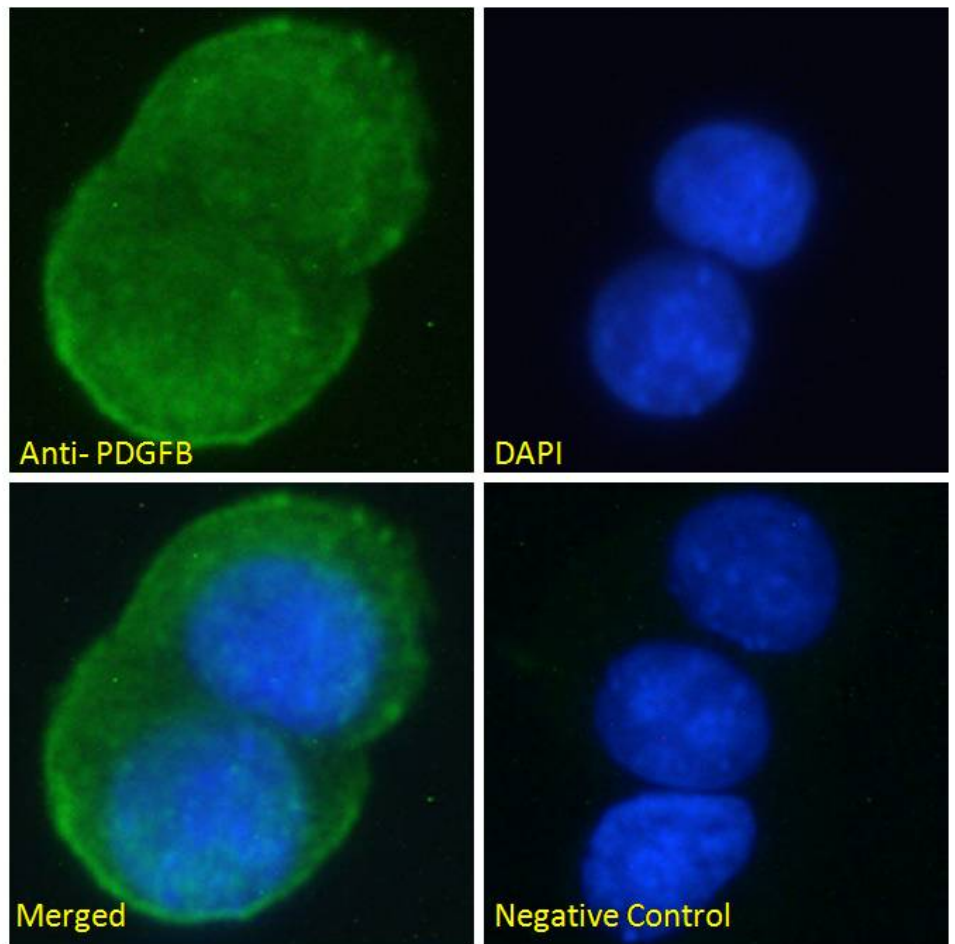
Immunofluorescence: Strong expression of the protein seen in the vesicles of MCF7 cells. Recommended concentration: 10µg/ml.

Flow Cytometry: Flow cytometric analysis of HeLa cells. Recommended concentration: 10ug/ml.

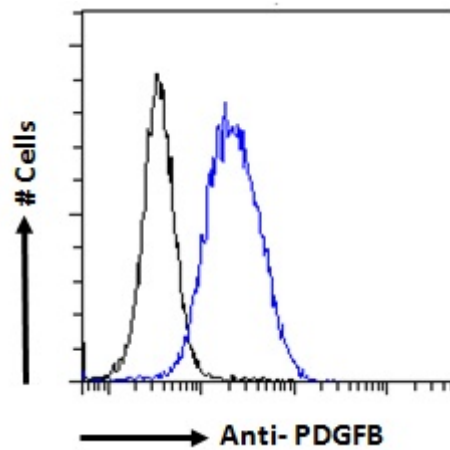
Species Reactivity

Tested: Human

Expected from sequence similarity: Human, Mouse, Rat, Dog, Cow, Sheep



EB09553 Immunofluorescence analysis of paraformaldehyde fixed MCF7 cells, permeabilized with 0.15% Triton. Primary incubation 1hr (10ug/ml) followed by Alexa Fluor 488 secondary antibody (2ug/ml), showing vesicle staining. The nuclear stain is DAPI (blue). Negative control: Unimmunized goat IgG (10ug/ml) followed by Alexa Fluor 488 secondary antibody (2ug/ml).



EB09553 Flow cytometric analysis of paraformaldehyde fixed HeLa cells (blue line), permeabilized with 0.5% Triton. Primary incubation 1hr (10ug/ml) followed by Alexa Fluor 488 secondary antibody (1ug/ml). IgG control: Unimmunized goat IgG (black line) followed by Alexa Fluor 488 secondary antibody.