



UK Office

Everest Biotech Ltd

Cherwell Innovation Centre
77 Heyford Park
Upper Heyford
Oxfordshire
OX25 5HD
UK

Enquiries:

info@everestbiotech.com

Sales:

sales@everestbiotech.com

Tech support:

support@everestbiotech.com

Tel: +44 (0)1869 238326

www.everestbiotech.com

**Research Use Only. Not for
diagnostic or therapeutic use.**

EB10880 - Goat Anti-PDIA2 (aa477-481) Antibody

Size: 100µg specific antibody in 200µl



Target Protein

Principal Names: PDIA2, protein disulfide isomerase family A, member 2, LA16c-314G4.2, PDA2, PDI, PDIP, PDIR, OTTHUMP00000067350, OTTHUMP00000197166, Rho GDP dissociation inhibitor gamma, pancreas-specific protein disulfide isomerase, pancreatic protein disulfide isomerase, protein disulfide isomerase A2, protein disulfide isomerase, pancreatic, protein disulfide isomerase-associated 2, protein disulfide-isomerase A2

Official Symbol: PDIA2

Accession Number(s): NP_006840.2

Human GeneID(s): [64714](#)

Non-Human GeneID(s): 69191 (mouse), 287164 (rat)

Immunogen

Peptide with sequence C-EYKSTRDLETFSK, from the internal region (near C Terminus) of the protein sequence according to NP_006840.2.

Please note the [peptide](#) is available for sale.

Purification and Storage

Purified from goat serum by ammonium sulphate precipitation followed by antigen affinity chromatography using the immunizing peptide.

Supplied at 0.5 mg/ml in Tris saline, 0.02% sodium azide, pH7.3 with 0.5% bovine serum albumin.

Aliquot and store at -20°C. Minimize freezing and thawing.

Applications Tested

Peptide ELISA: antibody detection limit dilution 1:64000.

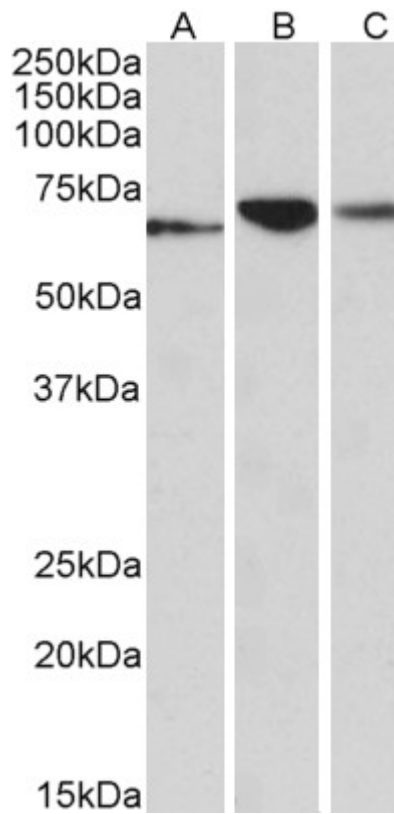
Western blot: Approx 65kDa band observed in Human, Mouse and Rat Pancreas lysates (calculated MW of 58.2kDa according to NP_006840.2). Recommended concentration: 0.01-0.03µg/ml.

IHC: In paraffin embedded Human Pancreas shows ER staining in the beta cells of Islets of Langerhans. Recommended concentration, 3-5µg/ml.

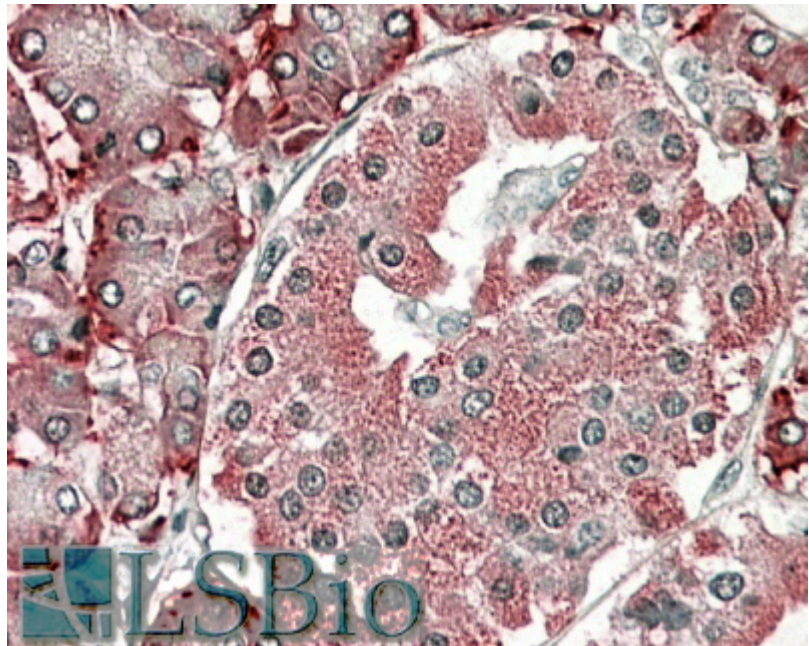
Species Reactivity

Tested: Human, Mouse, Rat

Expected from sequence similarity: Human, Mouse, Rat



EB10880 (0.1µg/ml) staining of Human (A), Mouse (B) and Rat (C) Pancreas lysates (35µg protein in RIPA buffer). Primary incubation was 1 hour. Detected by chemiluminescence.



EB10880 (3.8µg/ml) staining of paraffin embedded Human Pancreas. Steamed antigen retrieval with citrate buffer pH 6, AP-staining.