



## UK Office

### Everest Biotech Ltd

Cherwell Innovation Centre  
77 Heyford Park  
Upper Heyford  
Oxfordshire  
OX25 5HD  
UK

Enquiries:

[info@everestbiotech.com](mailto:info@everestbiotech.com)

Sales:

[sales@everestbiotech.com](mailto:sales@everestbiotech.com)

Tech support:

[support@everestbiotech.com](mailto:support@everestbiotech.com)

Tel: +44 (0)1869 238326

Fax: +44 (0)1869 238327

## US Office

### Everest Biotech c/o Abcore

405 Maple Street, Suite A106  
Ramona,  
CA 92065  
USA

Inquiries:

[info@everestbiotech.com](mailto:info@everestbiotech.com)

Sales:

[usasales@everestbiotech.com](mailto:usasales@everestbiotech.com)

Tech support:

[support@everestbiotech.com](mailto:support@everestbiotech.com)

Tel: 888-320-4628 (toll-free)

Fax: 888-841-9041

[www.everestbiotech.com](http://www.everestbiotech.com)

**Research Use Only. Not for  
diagnostic or therapeutic use.**

## EB10880 - Goat Anti-PDIA2 (aa477-481) Antibody

Size: 100µg specific antibody in 200µl



### Target Protein

**Principal Names:** PDIA2, protein disulfide isomerase family A, member 2, LA16c-314G4.2, PDA2, PDI, PDIP, PDIR, OTTHUMP00000067350, OTTHUMP00000197166, Rho GDP dissociation inhibitor gamma, pancreas-specific protein disulfide isomerase, pancreatic protein disulfide isomerase, protein disulfide isomerase A2, protein disulfide isomerase, pancreatic, protein disulfide isomerase-associated 2, protein disulfide-isomerase A2

**Official Symbol:** PDIA2

**Accession Number(s):** NP\_006840.2

**Human GeneID(s):** [64714](#)

**Non-Human GeneID(s):** 69191 (mouse), 287164 (rat)

### Immunogen

Peptide with sequence C-EYKSTRDLETFSK, from the internal region (near C Terminus) of the protein sequence according to NP\_006840.2.

Please note the [peptide](#) is available for sale.

### Purification and Storage

Purified from goat serum by ammonium sulphate precipitation followed by antigen affinity chromatography using the immunizing peptide.

Supplied at 0.5 mg/ml in Tris saline, 0.02% sodium azide, pH7.3 with 0.5% bovine serum albumin.

Aliquot and store at -20°C. Minimize freezing and thawing.

### Applications Tested

**Peptide ELISA:** antibody detection limit dilution 1:64000.

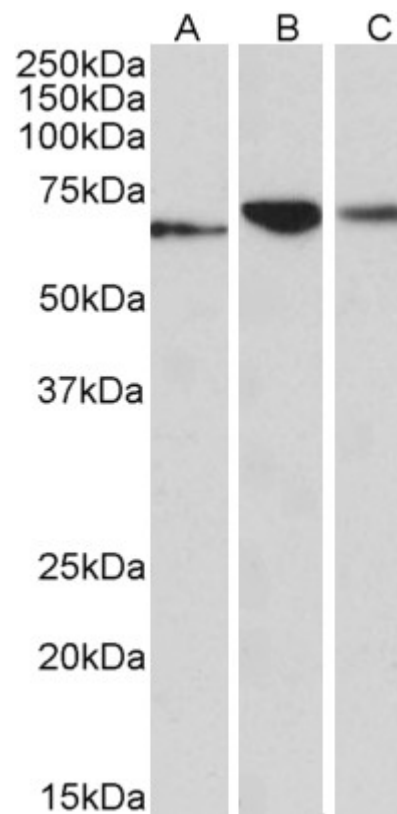
**Western blot:** Approx 65kDa band observed in Human, Mouse and Rat Pancreas lysates (calculated MW of 58.2kDa according to NP\_006840.2). Recommended concentration: 0.01-0.03µg/ml.

**IHC:** In paraffin embedded Human Pancreas shows ER staining in the beta cells of Islets of Langerhans. Recommended concentration, 3-5µg/ml.

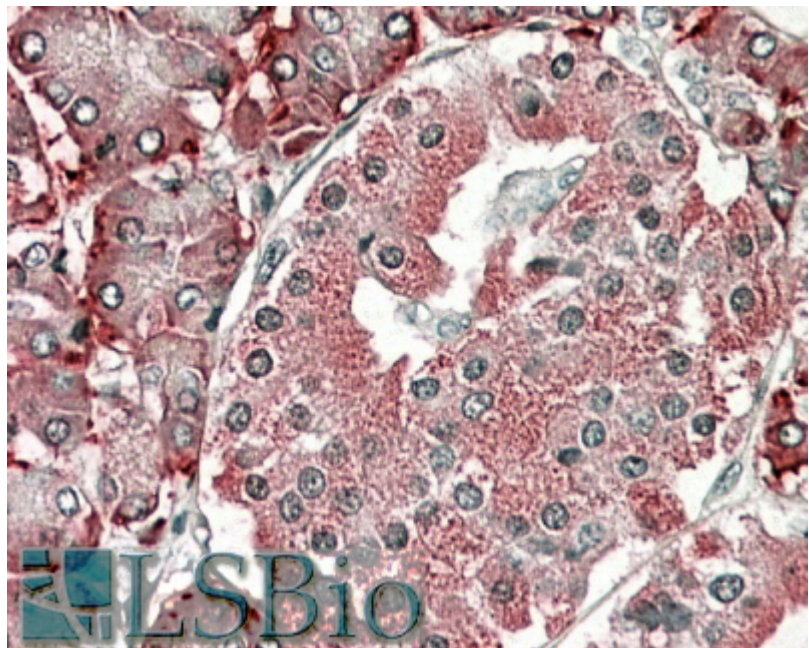
### Species Reactivity

**Tested:** Human, Mouse, Rat

**Expected from sequence similarity:** Human, Mouse, Rat



EB10880 (0.1µg/ml) staining of Human (A), Mouse (B) and Rat (C) Pancreas lysates (35µg protein in RIPA buffer). Primary incubation was 1 hour. Detected by chemiluminescence.



EB10880 (3.8µg/ml) staining of paraffin embedded Human Pancreas. Steamed antigen retrieval with citrate buffer pH 6, AP-staining.