



UK Office

Everest Biotech Ltd

Cherwell Innovation Centre
77 Heyford Park
Upper Heyford
Oxfordshire
OX25 5HD
UK

Enquiries:

info@everestbiotech.com

Sales:

sales@everestbiotech.com

Tech support:

support@everestbiotech.com

Tel: +44 (0)1869 238326

Fax: +44 (0)1869 238327

US Office

Everest Biotech c/o Abcore

405 Maple Street, Suite A106
Ramona,
CA 92065
USA

Inquiries:

info@everestbiotech.com

Sales:

usasales@everestbiotech.com

Tech support:

support@everestbiotech.com

Tel: 888-320-4628 (toll-free)

Fax: 888-841-9041

www.everestbiotech.com

**Research Use Only. Not for
diagnostic or therapeutic use.**

EB06983 - Goat Anti-PDK1 Antibody

Size: 100µg specific antibody in 200µl



Target Protein

Principal Names: PDK1, pyruvate dehydrogenase kinase, isoenzyme 1, HGNC:8809, mitochondrial pyruvate dehydrogenase kinase isoenzyme 1, pyruvate dehydrogenase kinase, isoenzyme 1, OTTHUMP00000205076, mitochondrial pyruvate dehydrogenase, lipoamide, kinase isoenzyme 1

Official Symbol: PDK1

Accession Number(s): NP_002601.1

Human GeneID(s): [5163](#)

Immunogen

Peptide with sequence C-DFKDKSAEDAK, from the internal region of the protein sequence according to NP_002601.1.

Please note the [peptide](#) is available for sale.

Purification and Storage

Purified from goat serum by ammonium sulphate precipitation followed by antigen affinity chromatography using the immunizing peptide.

Supplied at 0.5 mg/ml in Tris saline, 0.02% sodium azide, pH7.3 with 0.5% bovine serum albumin.

Aliquot and store at -20°C. Minimize freezing and thawing.

Applications Tested

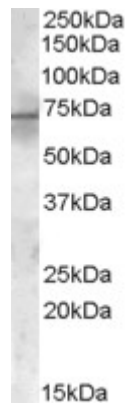
Peptide ELISA: antibody detection limit dilution 1:1000.

Western blot: Approx 65-70kDa band observed in Rat Heart lysates (calculated MW of 49.2kDa according to NP_002601.1). This molecular weight is routinely observed by other sources. Recommended concentration: 1-3µg/ml.

Species Reactivity

Tested: Rat

Expected from sequence similarity: Human, Mouse, Rat, Dog, Pig, Cow



EB06983 (1µg/ml) staining of Rat Heart lysate (35µg protein in RIPA buffer). Primary incubation was 1 hour.
Detected by chemiluminescence.