



UK Office

Everest Biotech Ltd

Cherwell Innovation Centre
77 Heyford Park
Upper Heyford
Oxfordshire
OX25 5HD
UK

Enquiries:

info@everestbiotech.com

Sales:

sales@everestbiotech.com

Tech support:

support@everestbiotech.com

Tel: +44 (0)1869 238326

Fax: +44 (0)1869 238327

US Office

Everest Biotech c/o Abcore

405 Maple Street, Suite A106
Ramona,
CA 92065
USA

Inquiries:

info@everestbiotech.com

Sales:

usasales@everestbiotech.com

Tech support:

support@everestbiotech.com

Tel: 888-320-4628 (toll-free)

Fax: 888-841-9041

www.everestbiotech.com

**Research Use Only. Not for
diagnostic or therapeutic use.**

EB09456 - Goat Anti-PDPN Antibody

Size: 100µg specific antibody in 200µl



Target Protein

Principal Names: PDPN, podoplanin, AGGRUS, GP36, GP40, Gp38, HT1A-1, OTS8, PA2.26, T1A, T1A-2, OTTHUMP00000009640, OTTHUMP00000044504, glycoprotein, 36-KD, hT1alpha-1, hT1alpha-2, lung type I cell membrane associated glycoprotein, lung type-I cell membrane-associated glycoprotein, lung type-I cell membrane-associated glycoprotein (T1A-2)

Official Symbol: PDPN

Accession Number(s): NP_006465.3; NP_938203.2; NP_001006625.1; NP_001006626.1

Human GeneID(s): [10630](#)

Important Comments: This antibody is expected to recognize all isoforms (NP_006465.3; NP_938203.2; NP_001006625.1; NP_001006626.1).

Immunogen

Peptide with sequence C-EKVDGDTQTTVEKD, from the internal region of the protein sequence according to NP_006465.3; NP_938203.2; NP_001006625.1; NP_001006626.1.

Please note the [peptide](#) is available for sale.

Purification and Storage

Purified from goat serum by ammonium sulphate precipitation followed by antigen affinity chromatography using the immunizing peptide.

Supplied at 0.5 mg/ml in Tris saline, 0.02% sodium azide, pH7.3 with 0.5% bovine serum albumin.

Aliquot and store at -20°C. Minimize freezing and thawing.

Applications Tested

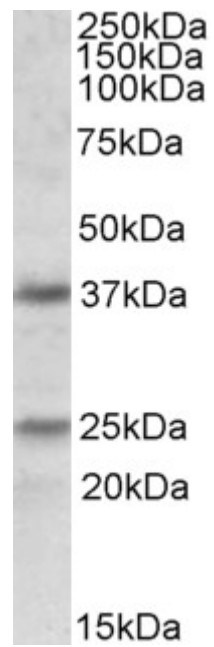
Peptide ELISA: antibody detection limit dilution 1:1000.

Western blot: Experiments gave bands at approx 25kDa and 37kDa in Human Brain (Cerebellum) lysates after 1µg/ml antibody staining. The 37kDa band corresponds to earlier findings in literature with different antibodies (Boucherot et al, Nephrol Dial Transplant. 2002 Jun;17(6):978-84; PMID: 12032185). This protein has a calculated MW of 24.9kDa according to NP_006465.3. Recommended concentration: 1-3µg/ml.

Species Reactivity

Tested: Human

Expected from sequence similarity: Human, Dog



EB09456 (1µg/ml) staining of Human Cerebellum lysate (35µg protein in RIPA buffer). Primary incubation was 1 hour. Detected by chemiluminescence.