



## UK Office

### Everest Biotech Ltd

Cherwell Innovation Centre  
77 Heyford Park  
Upper Heyford  
Oxfordshire  
OX25 5HD  
UK

Enquiries:

[info@everestbiotech.com](mailto:info@everestbiotech.com)

Sales:

[sales@everestbiotech.com](mailto:sales@everestbiotech.com)

Tech support:

[support@everestbiotech.com](mailto:support@everestbiotech.com)

Tel: +44 (0)1869 238326

Fax: +44 (0)1869 238327

## US Office

### Everest Biotech c/o Abcore

405 Maple Street, Suite A106  
Ramona,  
CA 92065  
USA

Inquiries:

[info@everestbiotech.com](mailto:info@everestbiotech.com)

Sales:

[usasales@everestbiotech.com](mailto:usasales@everestbiotech.com)

Tech support:

[support@everestbiotech.com](mailto:support@everestbiotech.com)

Tel: 888-320-4628 (toll-free)

Fax: 888-841-9041

[www.everestbiotech.com](http://www.everestbiotech.com)

**Research Use Only. Not for  
diagnostic or therapeutic use.**

## EB10505 - Goat Anti-PDXP Antibody

Size: 100µg specific antibody in 200µl



### Target Protein

**Principal Names:** chronophin, CIN, dJ37E16.5, FLJ32703, PLP, pyridoxal (pyridoxine, vitamin B6) phosphatase, pyridoxal phosphatase, pyridoxal phosphate phosphatase, PDXP

**Official Symbol:** PDXP

**Accession Number(s):** NP\_064711.1

**Human GeneID(s):** [57026](#)

**Non-Human GeneID(s):** 57028 (mouse), 727679 (rat)

### Immunogen

Peptide with sequence C-QHDLVPHYVYES, from the C Terminus of the protein sequence according to NP\_064711.1.

Please note the [peptide](#) is available for sale.

### Purification and Storage

Purified from goat serum by ammonium sulphate precipitation followed by antigen affinity chromatography using the immunizing peptide.

Supplied at 0.5 mg/ml in Tris saline, 0.02% sodium azide, pH7.3 with 0.5% bovine serum albumin.

Aliquot and store at -20°C. Minimize freezing and thawing.

### Applications Tested

**Peptide ELISA:** antibody detection limit dilution 1:64000.

**Western blot:** Approx 32kDa band observed in Human and Rat Heart lysates and in Mouse and Rat Brain lysates (calculated MW of 31.7kDa according to NP\_064711.1). Recommended concentration: 0.1-0.3µg/ml. Primary incubation was 1 hour.

**IHC:** Paraffin embedded Human Tonsil. Recommended concentration: 5µg/ml.

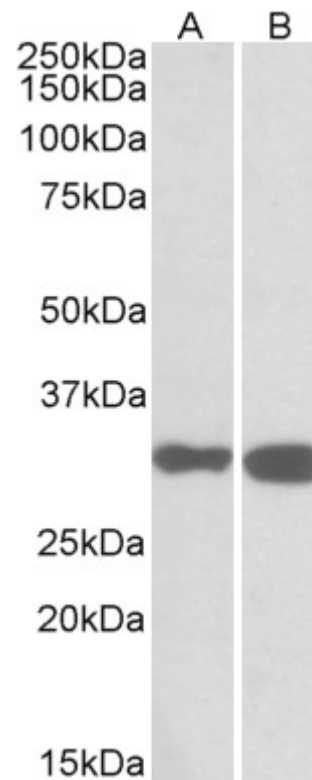
### Species Reactivity

**Tested:** Human, Mouse, Rat

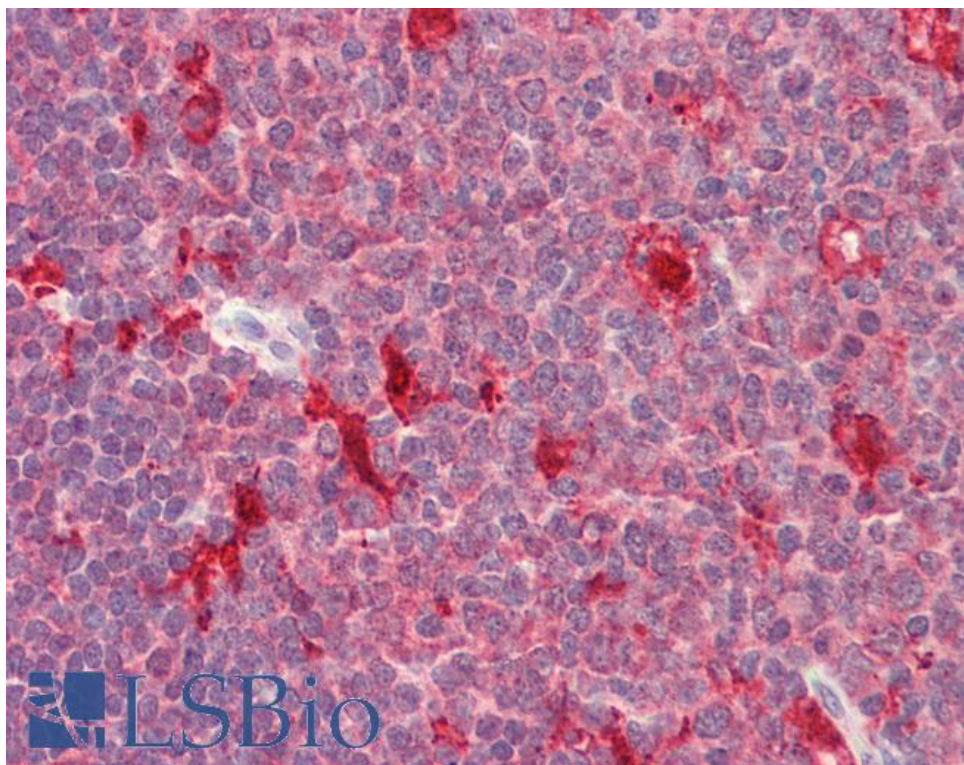
**Expected from sequence similarity:** Human, Mouse, Rat, Cow



EB10505 (0.1µg/ml) staining of Human Heart lysate (35µg protein in RIPA buffer). Detected by chemiluminescence.



EB10505 (0.1µg/ml) staining of Mouse (A) and Rat (B) Brain lysates (35µg protein in RIPA buffer). Detected by chemiluminescence.



EB10505 (5µg/ml) staining of paraffin embedded Human Tonsil. Steamed antigen retrieval with citrate buffer Ph 6, AP-staining.