



UK Office

Everest Biotech Ltd

Cherwell Innovation Centre
77 Heyford Park
Upper Heyford
Oxfordshire
OX25 5HD
UK

Enquiries:

info@everestbiotech.com

Sales:

sales@everestbiotech.com

Tech support:

support@everestbiotech.com

Tel: +44 (0)1869 238326

Fax: +44 (0)1869 238327

US Office

Everest Biotech c/o Abcore

405 Maple Street, Suite A106
Ramona,
CA 92065
USA

Inquiries:

info@everestbiotech.com

Sales:

usasales@everestbiotech.com

Tech support:

support@everestbiotech.com

Tel: 888-320-4628 (toll-free)

Fax: 888-841-9041

www.everestbiotech.com

**Research Use Only. Not for
diagnostic or therapeutic use.**

EB07727 - Goat Anti-Perilipin 1 (internal) Antibody

Size: 100µg specific antibody in 200µl



Target Protein

Principal Names: PLIN, perilipin, PERI, lipid droplet-associated protein, PLIN1, Perilipin 1

Official Symbol: PLIN1

Accession Number(s): NP_002657.3; NP_001138783.1 NP_001138783.1

Human GeneID(s): [5346](#)

Immunogen

Peptide with sequence C-PREKPKRRVSDS, from the internal region (near the C Terminus) of the protein sequence according to NP_002657.3; NP_001138783.1 NP_001138783.1.

Please note the [peptide](#) is available for sale.

Purification and Storage

Purified from goat serum by ammonium sulphate precipitation followed by antigen affinity chromatography using the immunizing peptide.

Supplied at 0.5 mg/ml in Tris saline, 0.02% sodium azide, pH7.3 with 0.5% bovine serum albumin.

Aliquot and store at -20°C. Minimize freezing and thawing.

Applications Tested

Peptide ELISA: antibody detection limit dilution 1:128000.

Western blot: Approx 60kDa band observed in Human Adipose lysates (calculated MW of 56.0kDa according to NP_002657.2). Recommended concentration: 0.01 µg/ml.

Primary incubation was 1 hour.

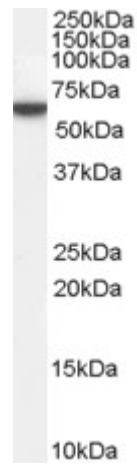
IHC: Paraffin embedded Human Colon. Recommended concentration: 2µg/ml.

This product is not suitable for IF.

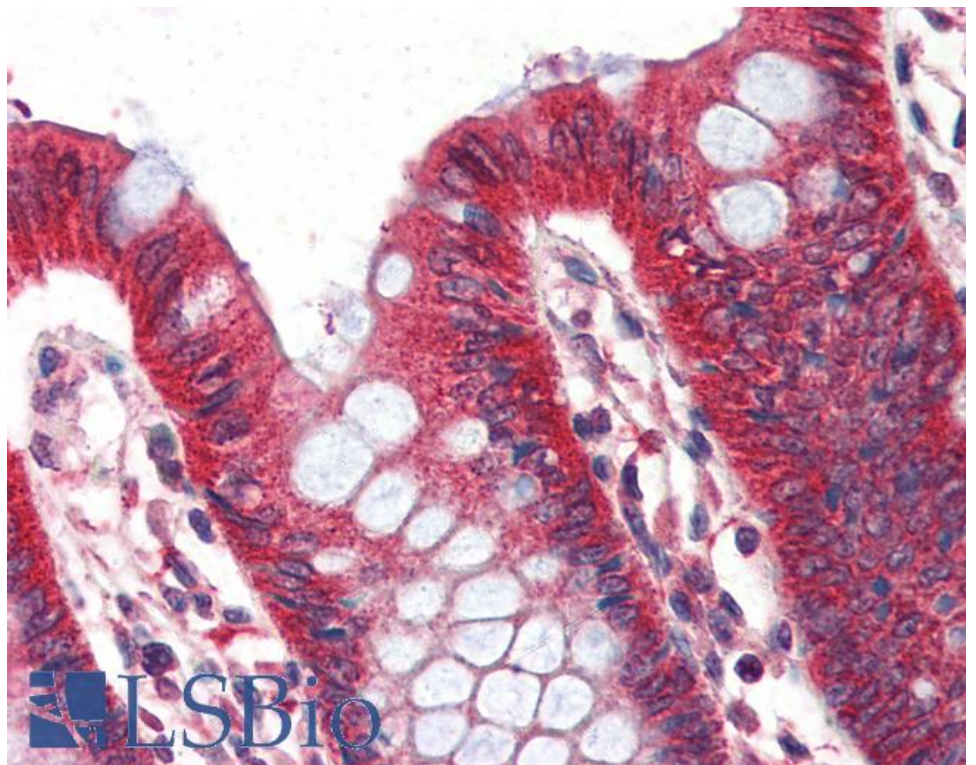
Species Reactivity

Tested: Human

Expected from sequence similarity: Human



EB07727 (0.01 μ g/ml) staining of Human Adipose lysate (35 μ g protein in RIPA buffer). Detected by chemiluminescence.



EB07727 (2 μ g/ml) staining of paraffin embedded Human Colon. Steamed antigen retrieval with citrate buffer pH 6, AP-staining.