



UK Office

Everest Biotech Ltd

Cherwell Innovation Centre
77 Heyford Park
Upper Heyford
Oxfordshire
OX25 5HD
UK

Enquiries:

info@everestbiotech.com

Sales:

sales@everestbiotech.com

Tech support:

support@everestbiotech.com

Tel: +44 (0)1869 238326

Fax: +44 (0)1869 238327

US Office

Everest Biotech c/o Abcore

405 Maple Street, Suite A106
Ramona,
CA 92065
USA

Inquiries:

info@everestbiotech.com

Sales:

usasales@everestbiotech.com

Tech support:

support@everestbiotech.com

Tel: 888-320-4628 (toll-free)

Fax: 888-841-9041

www.everestbiotech.com

**Research Use Only. Not for
diagnostic or therapeutic use.**

EB12403 - Goat Anti-peroxiredoxin 6 (aa170-180) Antibody

Size: 100µg specific antibody in 200µl



Target Protein

Principal Names: PRDX6, peroxiredoxin 6, 1-Cys, AOP2, NSGPx, PRX, aiPLA2, p29, 1-Cys PRX, 1-Cys peroxiredoxin, 24 kDa protein, acidic calcium-independent phospholipase A2, antioxidant protein 2, liver 2D page spot 40, non-selenium glutathione peroxidase, peroxiredoxin-6

Official Symbol: PRDX6

Accession Number(s): NP_004896.1

Human GeneID(s): [9588](#)

Immunogen

Peptide with sequence C-TAEKRVATPVD, from the internal region of the protein sequence according to NP_004896.1.

Please note the [peptide](#) is available for sale.

Purification and Storage

Purified from goat serum by ammonium sulphate precipitation followed by antigen affinity chromatography using the immunizing peptide.

Supplied at 0.5 mg/ml in Tris saline, 0.02% sodium azide, pH7.3 with 0.5% bovine serum albumin.

Aliquot and store at -20°C. Minimize freezing and thawing.

Applications Tested

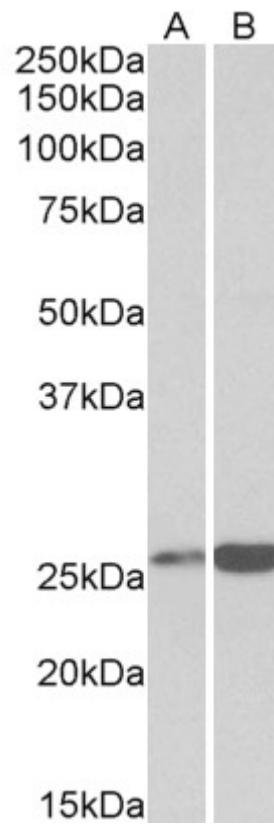
Peptide ELISA: antibody detection limit dilution 1:128000.

Western blot: Approx 26kDa band observed in Human and Pig Heart, Kidney and Liver lysates (calculated MW of 25.0kDa according to NP_004896.1). Recommended concentration: 0.3-1µg/ml.

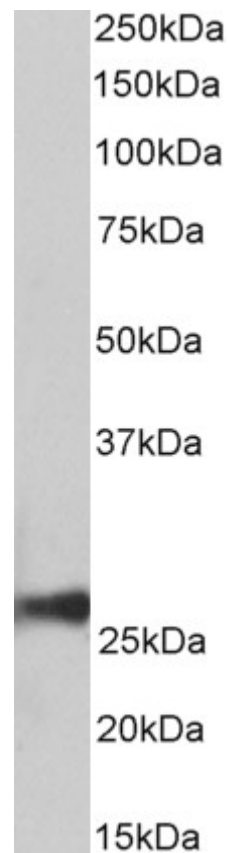
Species Reactivity

Tested: Human, Pig

Expected from sequence similarity: Human, Dog, Pig, Cow



EB12403 (0.3 μ g/ml) staining of Human Heart (A) and Liver (B) lysates (35 μ g protein in RIPA buffer). Primary incubation was 1 hour. Detected by chemiluminescence.



EB12403 (0.1 μ g/ml) staining of Pig Liver lysate (35 μ g protein in RIPA buffer). Primary incubation was 1 hour. Detected by chemiluminescence.