



UK Office

Everest Biotech Ltd

Cherwell Innovation Centre
77 Heyford Park
Upper Heyford
Oxfordshire
OX25 5HD
UK

Enquiries:

info@everestbiotech.com

Sales:

sales@everestbiotech.com

Tech support:

support@everestbiotech.com

Tel: +44 (0)1869 238326

www.everestbiotech.com

**Research Use Only. Not for
diagnostic or therapeutic use.**

EB10092 - Goat Anti-PEX26 Antibody

Size: 100µg specific antibody in 200µl



Target Protein

Principal Names: FLJ20695, peroxin-26, peroxisomal biogenesis factor 26, peroxisome assembly protein 26, peroxisome biogenesis disorder, complementation group 8, peroxisome biogenesis disorder, complementation group A, peroxisome biogenesis fac, PEX26M1T, Pex26pM1T, PEX26

Official Symbol: PEX26

Accession Number(s): NP_060399.1

Human GeneID(s): [55670](#)

Important Comments: Reported variants represent identical protein: NP_060399.1, NP_001121121.1

Immunogen

Peptide with sequence C-QKPNLEGSVSHK, from the internal region of the protein sequence according to NP_060399.1.

Please note the [peptide](#) is available for sale.

Purification and Storage

Purified from goat serum by ammonium sulphate precipitation followed by antigen affinity chromatography using the immunizing peptide.

Supplied at 0.5 mg/ml in Tris saline, 0.02% sodium azide, pH7.3 with 0.5% bovine serum albumin.

Aliquot and store at -20°C. Minimize freezing and thawing.

Applications Tested

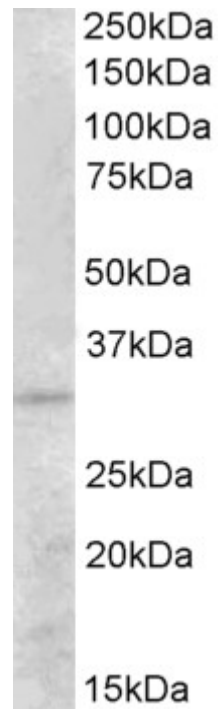
Peptide ELISA: antibody detection limit dilution 1:64000.

Western blot: Approx 33kDa band observed in Human Kidney lysates (calculated MW of 33.9kDa according to NP_060399.1). Recommended concentration: 0.5-1.5µg/ml.

Species Reactivity

Tested: Human

Expected from sequence similarity: Human



EB10092 (0.5 μ g/ml) staining of Human Kidney lysate (35 μ g protein in RIPA buffer). Primary incubation was 1 hour. Detected by chemiluminescence.