



UK Office

Everest Biotech Ltd

Cherwell Innovation Centre
77 Heyford Park
Upper Heyford
Oxfordshire
OX25 5HD
UK

Enquiries:

info@everestbiotech.com

Sales:

sales@everestbiotech.com

Tech support:

support@everestbiotech.com

Tel: +44 (0)1869 238326

www.everestbiotech.com

**Research Use Only. Not for
diagnostic or therapeutic use.**

EB12766 - Goat Anti-PEX5 Antibody

Size: 100µg specific antibody in 200µl



Target Protein

Principal Names: PEX5, peroxisomal biogenesis factor 5, FLJ50634, FLJ50721, FLJ51948, PTS1-BP, PTS1R, PXR1, OTTHUMP00000238192, OTTHUMP00000238193, OTTHUMP00000238194, OTTHUMP00000238195, OTTHUMP00000238353, OTTHUMP00000238354, OTTHUMP00000238356, PTS1 receptor, peroxin-5

Official Symbol: PEX5

Accession Number(s): NP_001124495.1; NP_000310.2; NP_001124496.1; NP_001124497.1

Human GeneID(s): [5830](#)

Important Comments: This antibody is expected to recognize all reported isoforms (NP_001124495.1; NP_000310.2; NP_001124496.1; NP_001124497.1). Reported variants represent identical protein: NP_001124498.1, NP_001124497.1

Immunogen

Peptide with sequence C-QHTASDFVAKVDDPK, from the internal region of the protein sequence according to NP_001124495.1; NP_000310.2; NP_001124496.1; NP_001124497.1.

Please note the [peptide](#) is available for sale.

Purification and Storage

Purified from goat serum by ammonium sulphate precipitation followed by antigen affinity chromatography using the immunizing peptide.

Supplied at 0.5 mg/ml in Tris saline, 0.02% sodium azide, pH7.3 with 0.5% bovine serum albumin.

Aliquot and store at -20°C. Minimize freezing and thawing.

Applications Tested

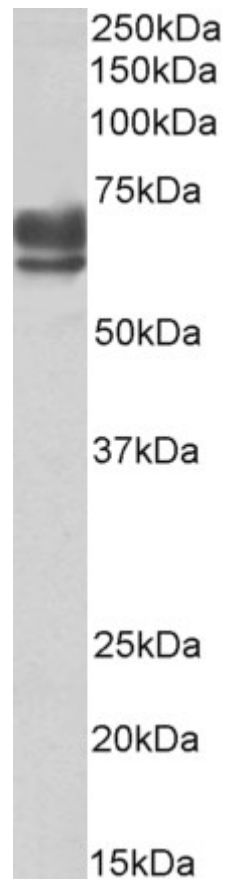
Peptide ELISA: antibody detection limit dilution 1:128000.

Western blot: Approx 70+65kDa bands observed in Human Kidney lysates (calculated MW of 72.3kDa according to NP_001124495.1 and 66.8kDa according to NP_001124496.1). Recommended concentration: 0.1-0.3µg/ml.

Species Reactivity

Tested: Human

Expected from sequence similarity: Human



EB12766 (0.1 μ g/ml) staining of Human Kidney lysate (35 μ g protein in RIPA buffer). Primary incubation was 1 hour. Detected by chemiluminescence.