



UK Office

Everest Biotech Ltd

Cherwell Innovation Centre
77 Heyford Park
Upper Heyford
Oxfordshire
OX25 5HD
UK

Enquiries:

info@everestbiotech.com

Sales:

sales@everestbiotech.com

Tech support:

support@everestbiotech.com

Tel: +44 (0)1869 238326

Fax: +44 (0)1869 238327

US Office

Everest Biotech c/o Abcore

405 Maple Street, Suite A106
Ramona,
CA 92065
USA

Inquiries:

info@everestbiotech.com

Sales:

usasales@everestbiotech.com

Tech support:

support@everestbiotech.com

Tel: 888-320-4628 (toll-free)

Fax: 888-841-9041

www.everestbiotech.com

**Research Use Only. Not for
diagnostic or therapeutic use.**

EB10087 - Goat Anti-PEX6 Antibody

Size: 100µg specific antibody in 200µl



Target Protein

Principal Names: PAF2, PAF-2, peroxisomal AAA-type ATPase 1, peroxisomal biogenesis factor 6, peroxisome biogenesis factor 6, PXAAA1, PEX6

Official Symbol: PEX6

Accession Number(s): NP_000278.3

Human GeneID(s): [5190](#)

Non-Human GeneID(s): 224824 (mouse), 117265 (rat)

Immunogen

Peptide with sequence C-EQELLRYKRIQRK, from the C Terminus of the protein sequence according to NP_000278.3.

Please note the [peptide](#) is available for sale.

Purification and Storage

Purified from goat serum by ammonium sulphate precipitation followed by antigen affinity chromatography using the immunizing peptide.

Supplied at 0.5 mg/ml in Tris saline, 0.02% sodium azide, pH7.3 with 0.5% bovine serum albumin.

Aliquot and store at -20°C. Minimize freezing and thawing.

Applications Tested

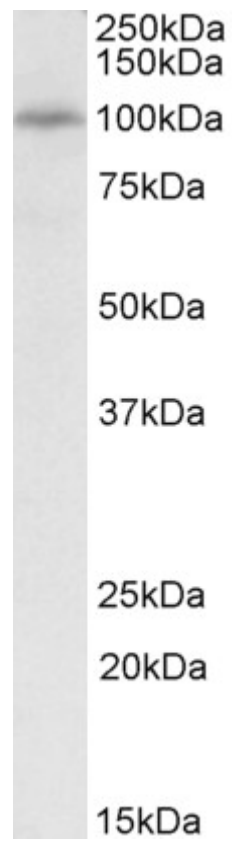
Peptide ELISA: antibody detection limit dilution 1:128000.

Western blot: Approx 100kDa band observed in Rat Liver lysates (calculated MW of 104kDa according to Rat NP_476466.1). Recommended concentration: 0.3-1µg/ml.

Species Reactivity

Tested: Rat

Expected from sequence similarity: Human, Mouse, Rat, Pig, Dog, Cow



EB10087 (0.3 μ g/ml) staining of Rat Liver lysate (35 μ g protein in RIPA buffer). Primary incubation was 1 hour.
Detected by chemiluminescence.