

## UK Office

### Everest Biotech Ltd

Cherwell Innovation Centre  
77 Heyford Park  
Upper Heyford  
Oxfordshire  
OX25 5HD  
UK

Enquiries:

[info@everestbiotech.com](mailto:info@everestbiotech.com)

Sales:

[sales@everestbiotech.com](mailto:sales@everestbiotech.com)

Tech support:

[support@everestbiotech.com](mailto:support@everestbiotech.com)

Tel: +44 (0)1869 238326

[www.everestbiotech.com](http://www.everestbiotech.com)

**Research Use Only. Not for  
diagnostic or therapeutic use.**

## EB09646 - Goat Anti-PFKFB2 Antibody

Size: 100µg specific antibody in 200µl



### Target Protein

**Principal Names:** PFKFB2, 6-phosphofructo-2-kinase/fructose-2,6-biphosphatase 2, DKFZp781D2217, MGC138308, MGC138310, PFK-2/FBPase-2, 6-phosphofructo-2-kinase/fructose-2,6-bisphosphatase 2, 6PF-2-K/Fru-2,6-P2ASE heart-type isozyme, OTTHUMP00000034285, OTTHUMP00000034286, PFKFB, cardiac, fructose-2,6-bisphosphatase, cardiac isozyme

**Official Symbol:** PFKFB2

**Accession Number(s):** NP\_006203.2; NP\_001018063.1

**Human GeneID(s):** [5208](#)

**Important Comments:** This antibody is expected to recognize both reported isoforms (NP\_006203.2; NP\_001018063.1).

### Immunogen

Peptide with sequence SEQNNNSYETKTP-C, from the N Terminus of the protein sequence according to NP\_006203.2; NP\_001018063.1.

Please note the [peptide](#) is available for sale.

### Purification and Storage

Purified from goat serum by ammonium sulphate precipitation followed by antigen affinity chromatography using the immunizing peptide.

Supplied at 0.5 mg/ml in Tris saline, 0.02% sodium azide, pH7.3 with 0.5% bovine serum albumin.

Aliquot and store at -20°C. Minimize freezing and thawing.

### Applications Tested

**Peptide ELISA:** antibody detection limit dilution 1:16000.

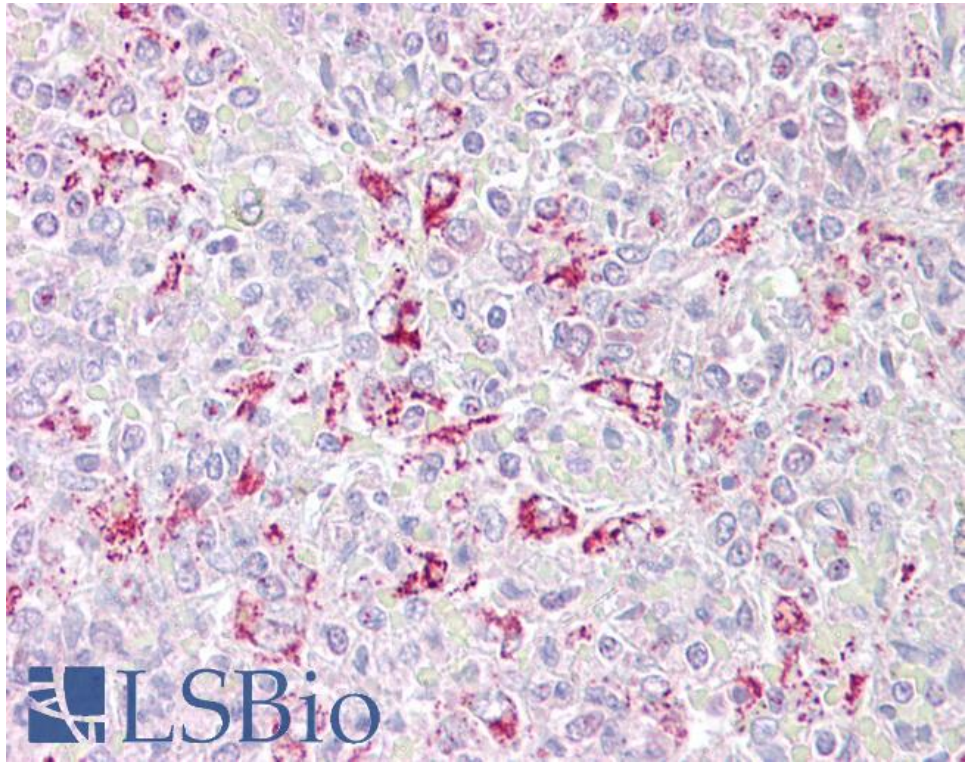
**Western blot:** Preliminary experiments gave an approx 75Da band in Human Heart lysates after 1µg/ml antibody staining. Please note that currently we cannot find an explanation in the literature for the band we observe given the calculated size of 58.5kDa according to NP\_006203.2 and 54.4kDa according to NP\_001018063.1. The 75kDa band was successfully blocked by incubation with the immunizing peptide.

**IHC:** Paraffin embedded Human Spleen. Recommended concentration: 2.5µg/ml.

### Species Reactivity

**Tested:** Human

**Expected from sequence similarity:** Human, Dog, Cow



EB09646 (2.5µg/ml) staining of paraffin embedded Human Spleen. Steamed antigen retrieval with citrate buffer pH 6, AP-staining.