



## UK Office

### Everest Biotech Ltd

Cherwell Innovation Centre  
77 Heyford Park  
Upper Heyford  
Oxfordshire  
OX25 5HD  
UK

Enquiries:

[info@everestbiotech.com](mailto:info@everestbiotech.com)

Sales:

[sales@everestbiotech.com](mailto:sales@everestbiotech.com)

Tech support:

[support@everestbiotech.com](mailto:support@everestbiotech.com)

Tel: +44 (0)1869 238326

Fax: +44 (0)1869 238327

## US Office

### Everest Biotech c/o Abcore

405 Maple Street, Suite A106  
Ramona,  
CA 92065  
USA

Inquiries:

[info@everestbiotech.com](mailto:info@everestbiotech.com)

Sales:

[usasales@everestbiotech.com](mailto:usasales@everestbiotech.com)

Tech support:

[support@everestbiotech.com](mailto:support@everestbiotech.com)

Tel: 888-320-4628 (toll-free)

Fax: 888-841-9041

[www.everestbiotech.com](http://www.everestbiotech.com)

**Research Use Only. Not for  
diagnostic or therapeutic use.**

## EB05028 - Goat Anti-PGAM1 / PGAM2 / PGAM4 Antibody

Size: 100µg specific antibody in 200µl



### Target Protein

**Principal Names:** PGAM1, PGAM2, phosphoglycerate mutase 1 (brain), PGAMA, RP11-452K12.8, OTTHUMP00000059414, Phosphoglycerate mutase A, nonmuscle form, phosphoglycerate mutase 2 (muscle), MGC88743, PGAMM, Phosphoglycerate mutase, muscle form, PGAM3, phosphoglycerate mutase family member 4, PGAM-B, dJ1000K24.1, phosphoglycerate mutase family 3, phosphoglycerate mutase family 4, phosphoglycerate mutase processed protein, bisphosphoglycerate mutase 1, bisphosphoglycerate mutase 2, bisphosphoglycerate mutase 4, BPG-dependent PGAM 1, OTTHUMP00000020190, PGAM-M, BPG-dependent PGAM 2, OTTHUMP00000063546

**Official Symbol:** PGAM1 / PGAM2 / PGAM4

**Accession Number(s):** NP\_002620.1; NP\_000281.2; NP\_001025062.1

**Human GeneID(s):** [5223](#) , [5224](#)

**Important Comments:** Please note this antibody is expected to recognize the products of 3 highly similar genes.

### Immunogen

Peptide with sequence C-KAMEAVAAQGKAKK, from the C Terminus of the protein sequence according to NP\_002620.1; NP\_000281.2; NP\_001025062.1.

Please note the [peptide](#) is available for sale.

### Purification and Storage

Purified from goat serum by ammonium sulphate precipitation followed by antigen affinity chromatography using the immunizing peptide.

Supplied at 0.5 mg/ml in Tris saline, 0.02% sodium azide, pH7.3 with 0.5% bovine serum albumin.

Aliquot and store at -20°C. Minimize freezing and thawing.

### Applications Tested

**Peptide ELISA:** antibody detection limit dilution 1:128000.

**Western blot:** Approx 28kDa band observed in Human, Mouse, Rat and Pig Liver lysates (calculated MW of 28.8kDa according to NP\_002620.1; NP\_000281.2 and of NP\_001025062.1). The additional 30kDa band observed in the rodent lysates likely represent the acetylated form. Recommended concentration: 0.05-0.15µg/ml. Primary incubation was 1 hour.

### Species Reactivity

**Tested:** Human, Mouse, Rat, Pig

**Expected from sequence similarity:** Human, Mouse, Rat, Dog, Pig, Cow

### Specific Reference

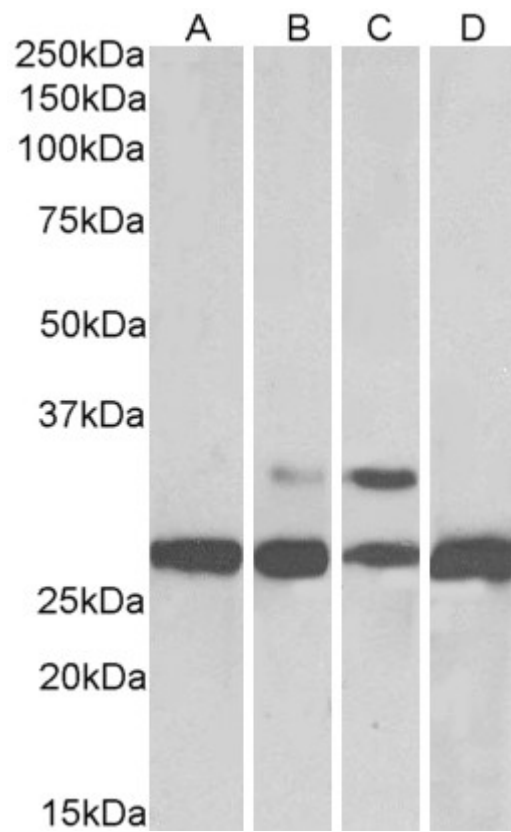
**This antibody (previous batch) has been successfully used in the following paper:**

Krzysztof Sikorski, Adi Mehta, Marit Inngjerdigen, Flourina Thakor, Simon Kling, Tomas Kalina, Tuula A. Nyman, Maria Ekman Stensland, Wei Zhou, Gustavo A. De Souza, Lars Holden, Jan Stuchly, Markus Templin and Fridtjof Lund-Johansen

A high-throughput pipeline for validation of antibodies

Nat Methods. 2018 Nov;15(11):909-912

PMID: 30377371



EB05028 (0.05µg/ml) staining of Human (A), Mouse (B), Rat (C) and Pig Liver (D) lysates (35µg protein in RIPA buffer). Detected by chemiluminescence.