



## UK Office

### Everest Biotech Ltd

Cherwell Innovation Centre  
77 Heyford Park  
Upper Heyford  
Oxfordshire  
OX25 5HD  
UK

Enquiries:

[info@everestbiotech.com](mailto:info@everestbiotech.com)

Sales:

[sales@everestbiotech.com](mailto:sales@everestbiotech.com)

Tech support:

[support@everestbiotech.com](mailto:support@everestbiotech.com)

Tel: +44 (0)1869 238326

Fax: +44 (0)1869 238327

## US Office

### Everest Biotech c/o Abcore

405 Maple Street, Suite A106  
Ramona,  
CA 92065  
USA

Inquiries:

[info@everestbiotech.com](mailto:info@everestbiotech.com)

Sales:

[usasales@everestbiotech.com](mailto:usasales@everestbiotech.com)

Tech support:

[support@everestbiotech.com](mailto:support@everestbiotech.com)

Tel: 888-320-4628 (toll-free)

Fax: 888-841-9041

[www.everestbiotech.com](http://www.everestbiotech.com)

**Research Use Only. Not for  
diagnostic or therapeutic use.**

## EB07856 - Goat Anti-PGC1A/PPARGC1A Antibody

Size: 100µg specific antibody in 200µl



### Target Protein

**Principal Names:** PGC1A, PPARGC1A, peroxisome proliferator-activated receptor gamma, coactivator 1 alpha, LEM6, PGC-1(alpha), PGC-1v, PGC1, PPARGC1, PPAR gamma coactivator variant form, PPAR gamma coactivator-1, ligand effect modulator-6, peroxisome proliferative activated receptor, gamma, coactivator 1, peroxisome proliferative activated receptor, gamma, coactivator 1, alpha

**Official Symbol:** PPARGC1A

**Accession Number(s):** NP\_037393.1; NP\_001317680.1; NP\_001317681.1; NP\_001317682.1; NP\_001341756.1;

**Human GeneID(s):** [10891](#)

**Non-Human GeneID(s):** 19017 (mouse), 83516 (rat)

### Immunogen

Peptide with sequence C-DGLFDDSEDESDK, from the internal region of the protein sequence according to NP\_037393.1; NP\_001317680.1; NP\_001317681.1; NP\_001317682.1; NP\_001341756.1;.

Please note the [peptide](#) is available for sale.

### Purification and Storage

Purified from goat serum by ammonium sulphate precipitation followed by antigen affinity chromatography using the immunizing peptide.

Supplied at 0.5 mg/ml in Tris saline, 0.02% sodium azide, pH7.3 with 0.5% bovine serum albumin.

Aliquot and store at -20°C. Minimize freezing and thawing.

### Applications Tested

**Peptide ELISA:** antibody detection limit dilution 1:2000.

**Western blot:** Preliminary testing showed a band at approx 90kDa in nuclear lysates of cell lines A431 and HEK293 after 0.3-1µg/ml antibody staining (calculated MW of 91.0kDa according to Human NP\_037393.1). Primary incubation 1 hour at room temperature.

**IHC:** Paraffin embedded Human Kidney. Recommended concentration: 6-8µg/ml.

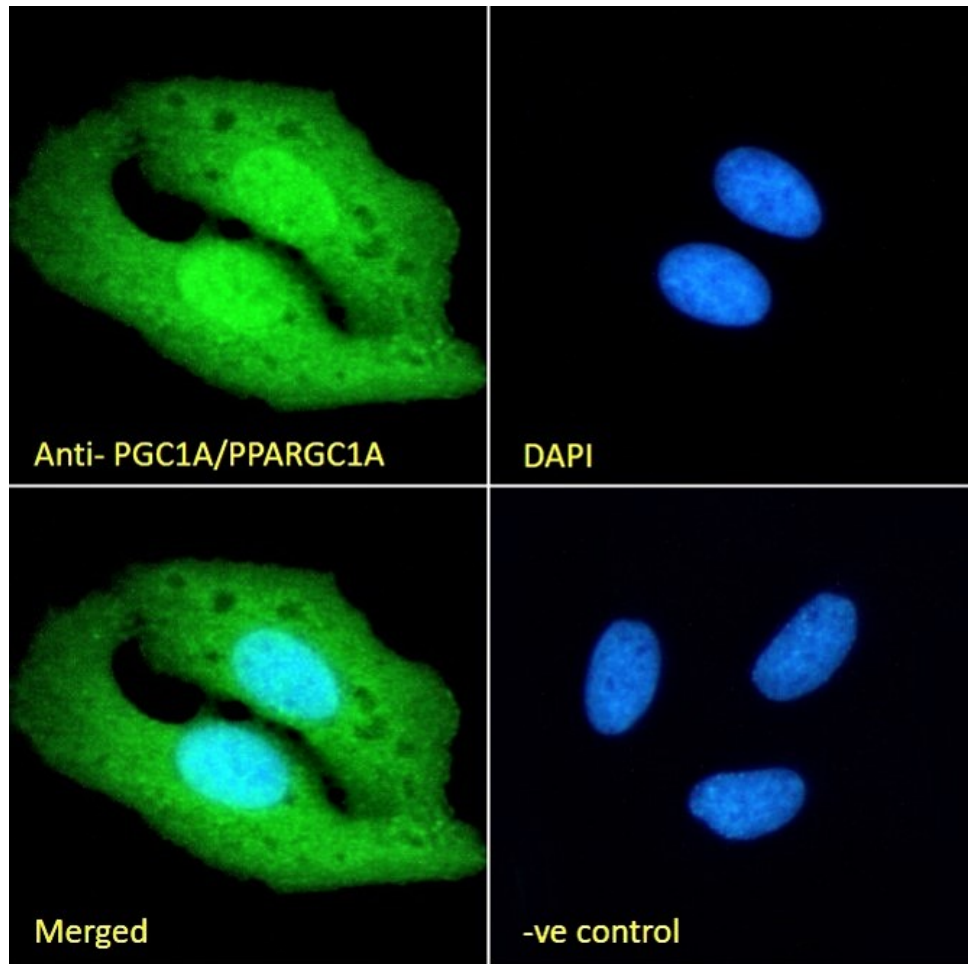
**Immunofluorescence:** Strong expression of the protein seen in the nucleus and cytoplasm of U2OS and HeLa cells. Recommended concentration: 10µg/ml.

**Flow Cytometry:** Flow cytometric analysis of HeLa cells. Recommended concentration: 10ug/ml.

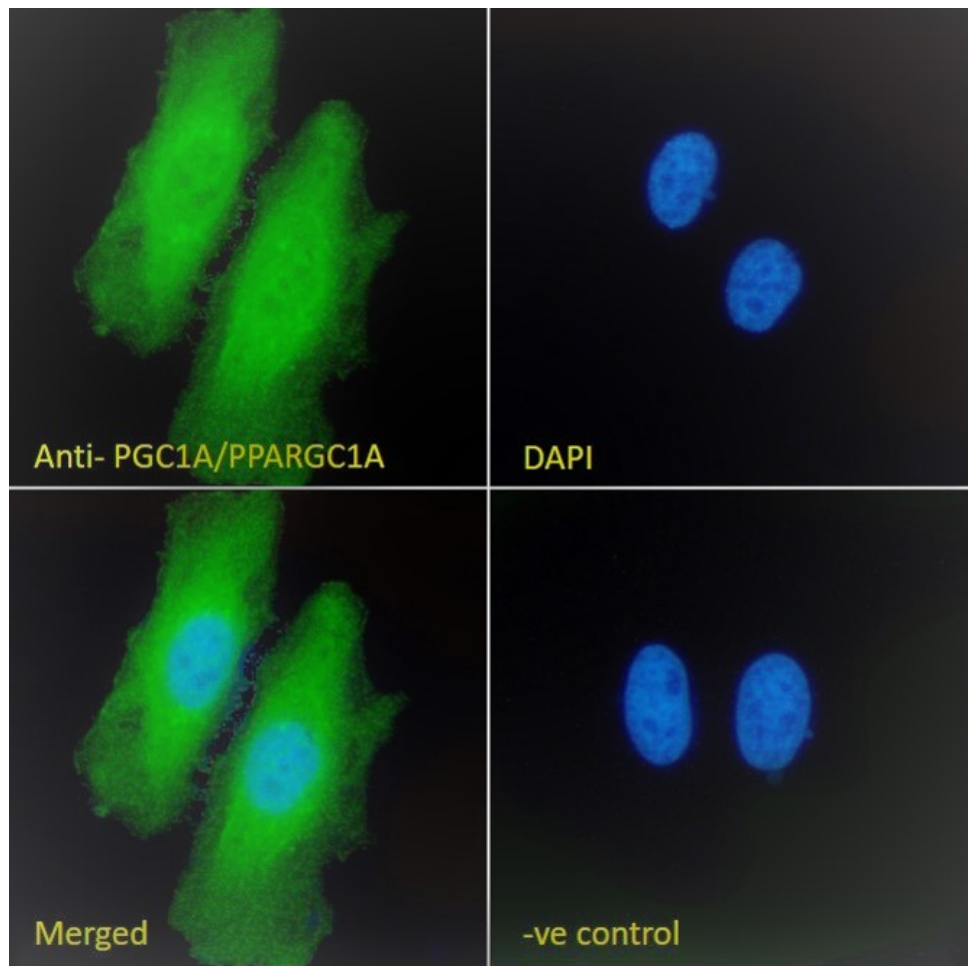
### Species Reactivity

**Tested:** Human

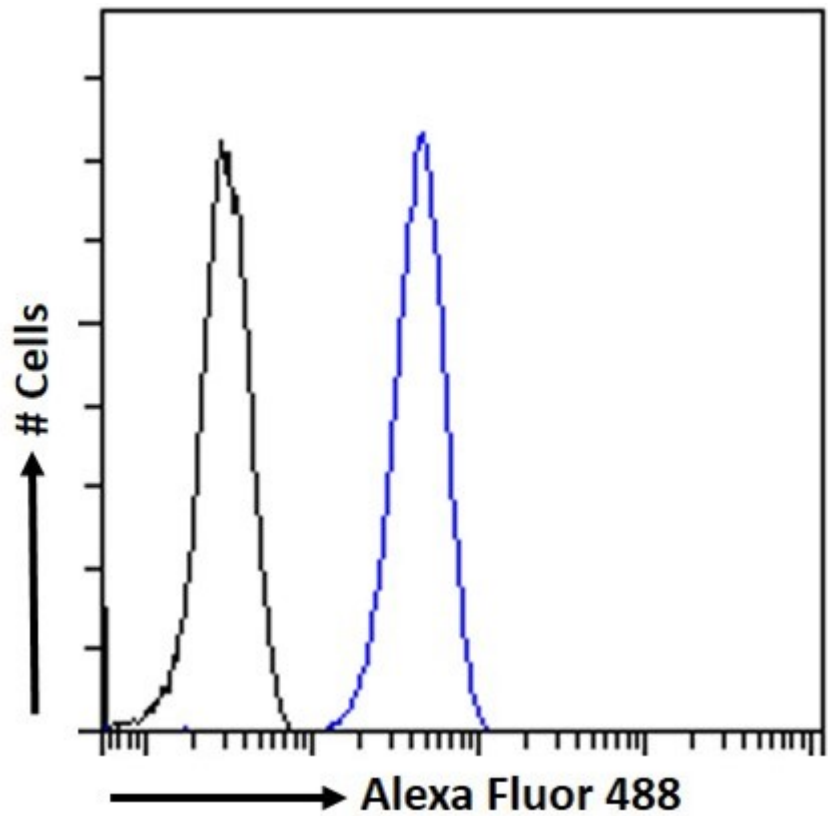
**Expected from sequence similarity:** Human, Mouse, Rat, Dog, Cow



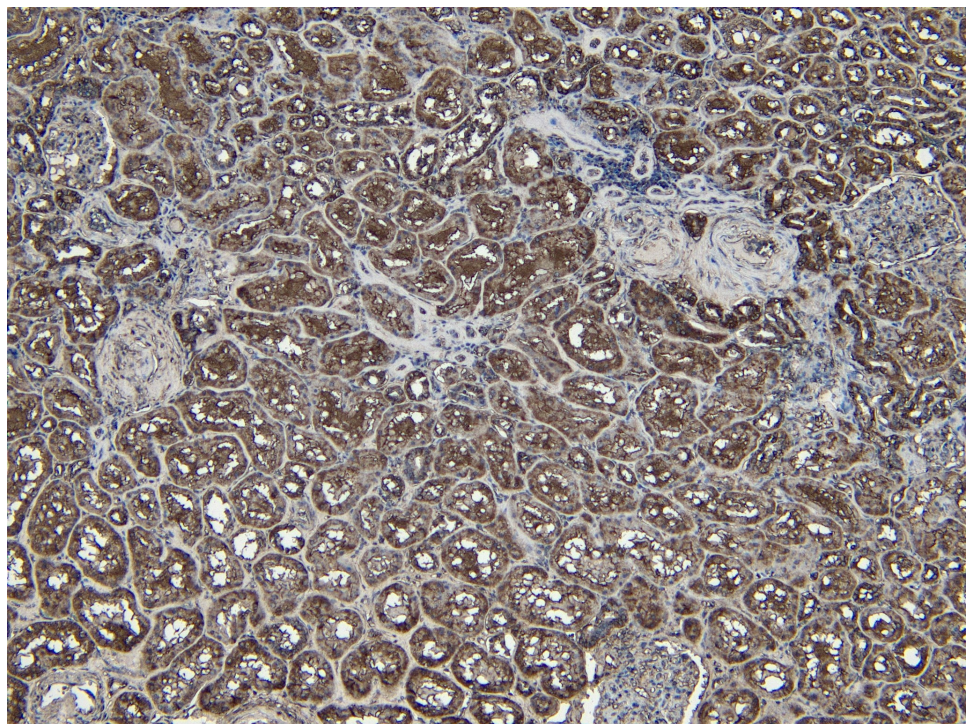
EB07856 Immunofluorescence analysis of paraformaldehyde fixed U2OS cells, permeabilized with 0.15% Triton. Primary incubation 1hr (10ug/ml) followed by Alexa Fluor 488 secondary antibody (2ug/ml), showing nuclear and cytoplasmic staining. The nuclear stain is DAPI (blue). Negative control: Unimmunized goat IgG (10ug/ml) followed by Alexa Fluor 488 secondary antibody (2ug/ml).



EB07856 Immunofluorescence analysis of paraformaldehyde fixed HeLa cells, permeabilized with 0.15% Triton. Primary incubation 1hr (10ug/ml) followed by Alexa Fluor 488 secondary antibody (2ug/ml), showing nuclear and cytoplasmic staining. The nuclear stain is DAPI (blue). Negative control: Unimmunized goat IgG (10ug/ml) followed by Alexa Fluor 488 secondary antibody (2ug/ml).

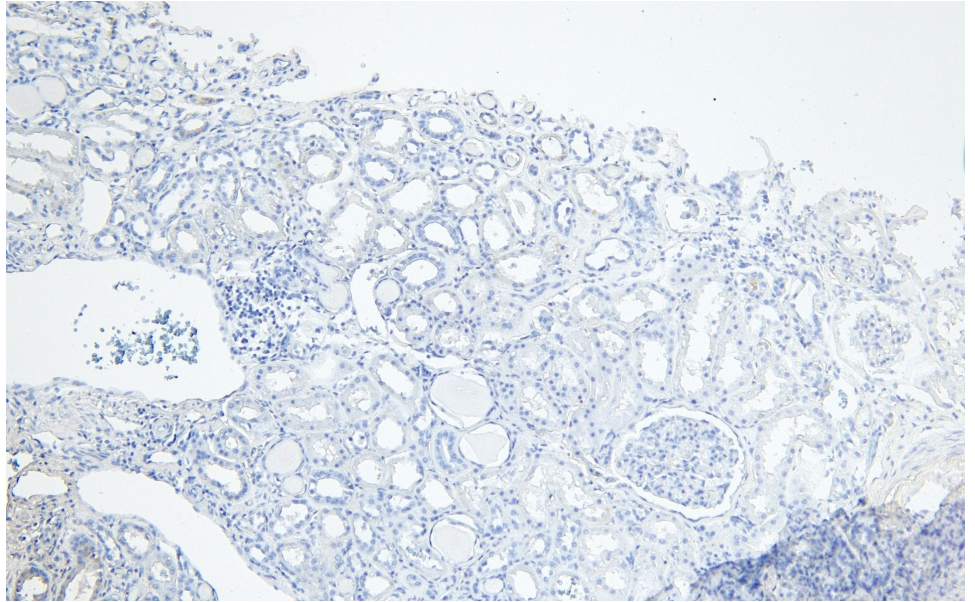


EB07856 Flow cytometric analysis of paraformaldehyde fixed HeLa cells (blue line), permeabilized with 0.5% Triton. Primary incubation 1hr (10ug/ml) followed by Alexa Fluor 488 secondary antibody (1ug/ml). IgG control: Unimmunized goat IgG (black line) followed by Alexa Fluor 488 secondary antibody.



EB07856 (6µg/ml) staining of paraffin embedded Human Kidney. Heat induced antigen retrieval with citrate buffer pH 6, HRP-staining.





EB07856 Negative Control showing staining of paraffin embedded Human Kidney, with no primary antibody.