



## UK Office

### Everest Biotech Ltd

Cherwell Innovation Centre  
77 Heyford Park  
Upper Heyford  
Oxfordshire  
OX25 5HD  
UK

Enquiries:

[info@everestbiotech.com](mailto:info@everestbiotech.com)

Sales:

[sales@everestbiotech.com](mailto:sales@everestbiotech.com)

Tech support:

[support@everestbiotech.com](mailto:support@everestbiotech.com)

Tel: +44 (0)1869 238326

Fax: +44 (0)1869 238327

## US Office

### Everest Biotech c/o Abcore

405 Maple Street, Suite A106  
Ramona,  
CA 92065  
USA

Inquiries:

[info@everestbiotech.com](mailto:info@everestbiotech.com)

Sales:

[usasales@everestbiotech.com](mailto:usasales@everestbiotech.com)

Tech support:

[support@everestbiotech.com](mailto:support@everestbiotech.com)

Tel: 888-320-4628 (toll-free)

Fax: 888-841-9041

[www.everestbiotech.com](http://www.everestbiotech.com)

**Research Use Only. Not for  
diagnostic or therapeutic use.**

## EB07207 - Goat Anti-PGRMC1 / MPR Antibody

Size: 100µg specific antibody in 200µl



### Target Protein

**Principal Names:** PGRMC1, MPR, progesterone receptor membrane component 1, HGNC:16090, HPR6.6, progesterone binding protein

**Official Symbol:** PGRMC1

**Accession Number(s):** NP\_006658.1

**Human GeneID(s):** [10857](#)

**Non-Human GeneID(s):** 53328 (mouse)

### Immunogen

Peptide with sequence C-EPKDESARKND, from the C Terminus of the protein sequence according to NP\_006658.1.

Please note the [peptide](#) is available for sale.

### Purification and Storage

Purified from goat serum by ammonium sulphate precipitation followed by antigen affinity chromatography using the immunizing peptide.

Supplied at 0.5 mg/ml in Tris saline, 0.02% sodium azide, pH7.3 with 0.5% bovine serum albumin.

Aliquot and store at -20°C. Minimize freezing and thawing.

### Applications Tested

**Peptide ELISA:** antibody detection limit dilution 1:4000.

**Western blot:** Approx 24kDa band observed in Human Kidney, Liver and Testis lysates, and approx 25kDa in Mouse Testis lysates (calculated MW of 21.7kDa according to Human NP\_006658.1 and Mouse NP\_058063.2). These molecular weights are routinely observed by other sources. Recommended concentration: 0.1-0.3µg/ml. Primary incubation 1 hour at room temperature.

**IHC:** Paraffin embedded Human Testis. Recommended concentration: 5µg/ml.

**Immunofluorescence:** This antibody has been successfully used in IF on Human: Izzo, N. J et al. (2014) PMID: 25390692.

### Species Reactivity

**Tested:** Human, Mouse

**Expected from sequence similarity:** Human, Mouse, Rat

### Specific Reference

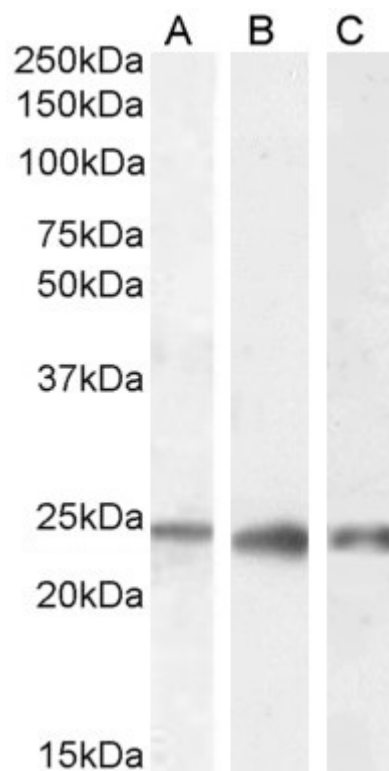
**This antibody has been successfully used in IF on Human:**

Izzo, N. J., Xu, J., et al.

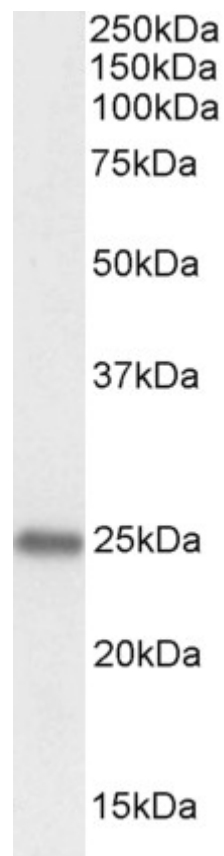
Alzheimer's therapeutics targeting amyloid beta 1-42 oligomers II: Sigma-2/PGRMC1 receptors mediate Abeta 42 oligomer binding and synaptotoxicity.

PLoS One. 2014 Nov 12;9(11):e111899.

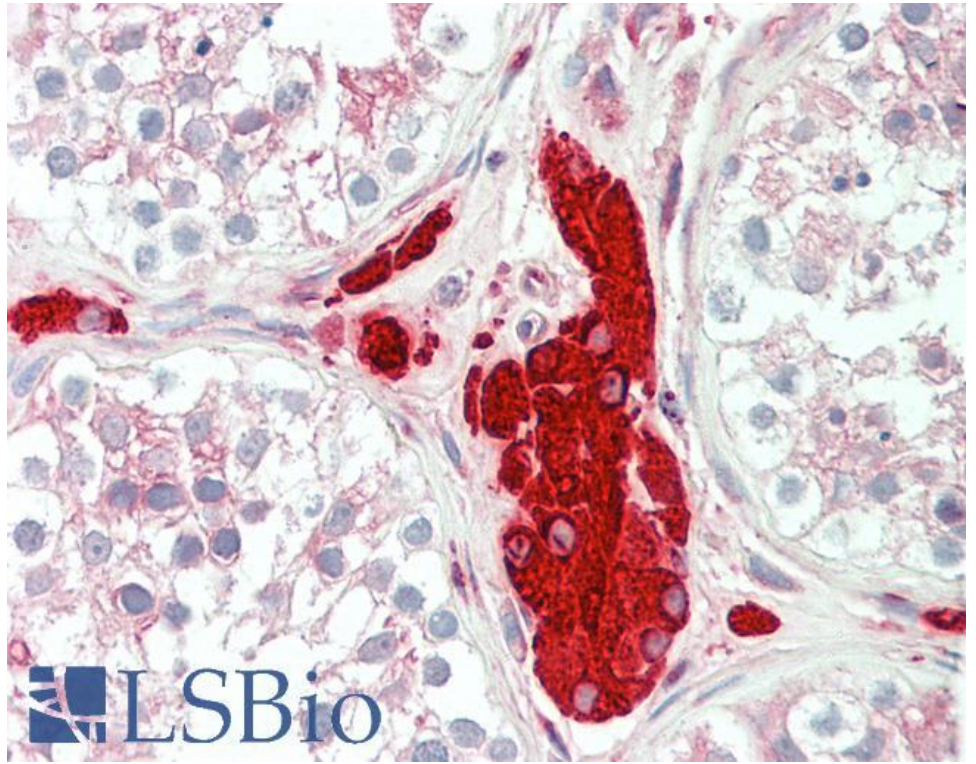
PMID: 25390692



EB07207 (0.1µg/ml) staining of Human Kidney (A), Liver (B) and Testes (C) lysate (35µg protein in RIPA buffer).  
Detected by chemiluminescence.



EB07207 (0.1µg/ml) staining of Mouse Testes lysate (35µg protein in RIPA buffer). Detected by  
chemiluminescence.



EB07207 (5µg/ml) staining of paraffin embedded Human Testis. Steamed antigen retrieval with citrate buffer pH 6, AP-staining.