

UK Office

Everest Biotech Ltd

Cherwell Innovation Centre
77 Heyford Park
Upper Heyford
Oxfordshire
OX25 5HD
UK

Enquiries:

info@everestbiotech.com

Sales:

sales@everestbiotech.com

Tech support:

support@everestbiotech.com

Tel: +44 (0)1869 238326

www.everestbiotech.com

**Research Use Only. Not for
diagnostic or therapeutic use.**

EB08053 - Goat Anti-PGRP-S Antibody

Size: 100µg specific antibody in 200µl



Target Protein

Principal Names: PGRP-S, PGRPS, PGLYRP1, peptidoglycan recognition protein 1, MGC126894, MGC126896, PGLYRP, PGRP, TAG7, TNFSF3L, TNF superfamily, member 3 (LTB)-like (peptidoglycan recognition protein)

Official Symbol: PGLYRP1

Accession Number(s): NP_005082.1

Human GeneID(s): [8993](#)

Immunogen

Peptide with sequence C-PGNQLYHLIQN, from the C Terminus of the protein sequence according to NP_005082.1.

Please note the [peptide](#) is available for sale.

Purification and Storage

Purified from goat serum by ammonium sulphate precipitation followed by antigen affinity chromatography using the immunizing peptide.

Supplied at 0.5 mg/ml in Tris saline, 0.02% sodium azide, pH7.3 with 0.5% bovine serum albumin.

Aliquot and store at -20°C. Minimize freezing and thawing.

Applications Tested

Peptide ELISA: antibody detection limit dilution 1:4000.

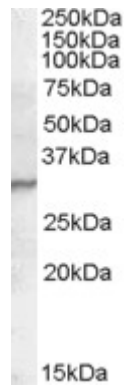
Western blot: Approx 30kDa band observed in lysates of cell line Jurkat (calculated MW of 21.7kDa according to NP_005082.1). The observed molecular weight corresponds to earlier findings in literature with different antibodies (Lu et al, J Biol Chem. 2006 Mar 3;281(9):5895-907; PMID: 16354652). Recommended concentration: 0.3-1µg/ml.

IHC: In paraffin embedded Human Spleen shows staining of select splenocytes. Recommended concentration, 3-6µg/ml.

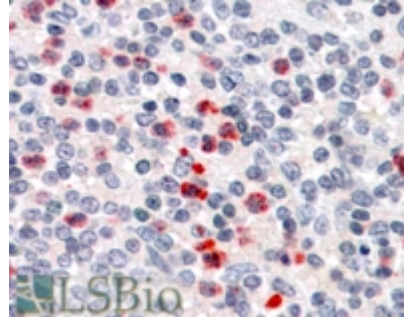
Species Reactivity

Tested: Human

Expected from sequence similarity: Human, Dog



EB08053 (0.3 μ g/ml) staining of Jurkat lysate (35 μ g protein in RIPA buffer). Primary incubation was 1 hour.
Detected by chemiluminescence.



EB08053 (3.8 μ g/ml) staining of paraffin embedded Human Spleen. Steamed antigen retrieval with citrate buffer pH 6, AP-staining.