



UK Office

Everest Biotech Ltd

Cherwell Innovation Centre
77 Heyford Park
Upper Heyford
Oxfordshire
OX25 5HD
UK

Enquiries:

info@everestbiotech.com

Sales:

sales@everestbiotech.com

Tech support:

support@everestbiotech.com

Tel: +44 (0)1869 238326

www.everestbiotech.com

**Research Use Only. Not for
diagnostic or therapeutic use.**

EB10324 - Goat Anti-Phenylalanine Hydroxylase Antibody

Size: 100µg specific antibody in 200µl



Target Protein

Principal Names: PH, phenylalanine hydroxylase, PKU, PKU1, PAH

Official Symbol: PAH

Accession Number(s): NP_000268.1

Human GeneID(s): [5053](#)

Non-Human GeneID(s): 18478 (mouse), 24616 (rat)

Immunogen

Peptide with sequence C-ESRPSRLKKDE, from the internal region of the protein sequence according to NP_000268.1.

Please note the [peptide](#) is available for sale.

Purification and Storage

Purified from goat serum by ammonium sulphate precipitation followed by antigen affinity chromatography using the immunizing peptide.

Supplied at 0.5 mg/ml in Tris saline, 0.02% sodium azide, pH7.3 with 0.5% bovine serum albumin.

Aliquot and store at -20°C. Minimize freezing and thawing.

Applications Tested

Peptide ELISA: antibody detection limit dilution 1:128000.

Western blot: Approx 48kDa band observed in Human Liver lysates and approx.

50-52kDa in Rat Kidney lysates and in preliminary testing of Mouse Liver lysate

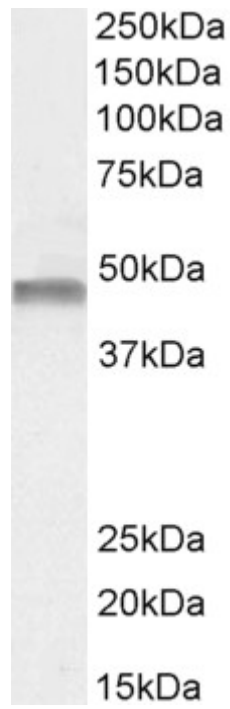
(calculated MW of 51.9kDa according to Hyman NP_000268.1 and Rat NP_036751.2).

Recommended concentration: 0.1-0.3µg/ml. Primary incubation 1 hour at room temperature.

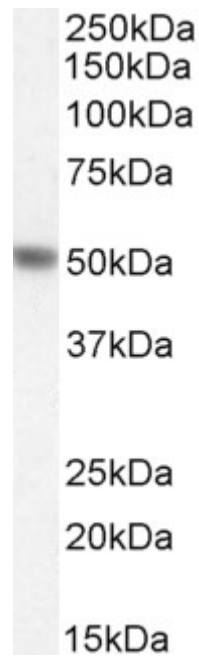
Species Reactivity

Tested: Human, Rat

Expected from sequence similarity: Human, Mouse, Rat, Dog, Cow



EB10324 (0.1µg/ml) staining of Human Liver lysate (35µg protein in RIPA buffer). Detected by chemiluminescence.



EB10324 (0.3µg/ml) staining of Rat Kidney lysate (35µg protein in RIPA buffer). Detected by chemiluminescence.