



UK Office

Everest Biotech Ltd

Cherwell Innovation Centre
77 Heyford Park
Upper Heyford
Oxfordshire
OX25 5HD
UK

Enquiries:

info@everestbiotech.com

Sales:

sales@everestbiotech.com

Tech support:

support@everestbiotech.com

Tel: +44 (0)1869 238326

Fax: +44 (0)1869 238327

US Office

Everest Biotech c/o Abcore

405 Maple Street, Suite A106
Ramona,
CA 92065
USA

Inquiries:

info@everestbiotech.com

Sales:

usasales@everestbiotech.com

Tech support:

support@everestbiotech.com

Tel: 888-320-4628 (toll-free)

Fax: 888-841-9041

www.everestbiotech.com

**Research Use Only. Not for
diagnostic or therapeutic use.**

EB06184 - Goat Anti-PHLDA2 / IPL Antibody

Size: 100µg specific antibody in 200µl



Target Protein

Principal Names: PHLDA2, pleckstrin homology-like domain, family A, member 2, TSSC3, IPL, BRW1C, BWR1C, HLDA2, PHLDA2, tumor suppressing subtransferable candidate 3, tumor-suppressing STF cDNA 3, imprinted in placenta and liver, p17-Beckwith-Wiedemann region 1C, pleckstrin homology-like domain family A member 2, tumor suppressing subchromosomal transferable fragment cDNA 3, tumor suppressing subtransferable candidate 3, tumor-suppressing STF cDNA 3

Official Symbol: PHLDA2

Accession Number(s): NP_003302.1

Human GeneID(s): [7262](#)

Immunogen

Peptide with sequence C-EPSRPSPQPKRTP, from the C Terminus of the protein sequence according to NP_003302.1.

Please note the [peptide](#) is available for sale.

Purification and Storage

Purified from goat serum by ammonium sulphate precipitation followed by antigen affinity chromatography using the immunizing peptide.

Supplied at 0.5 mg/ml in Tris saline, 0.02% sodium azide, pH7.3 with 0.5% bovine serum albumin.

Aliquot and store at -20°C. Minimize freezing and thawing.

Applications Tested

Peptide ELISA: antibody detection limit dilution 1:32000.

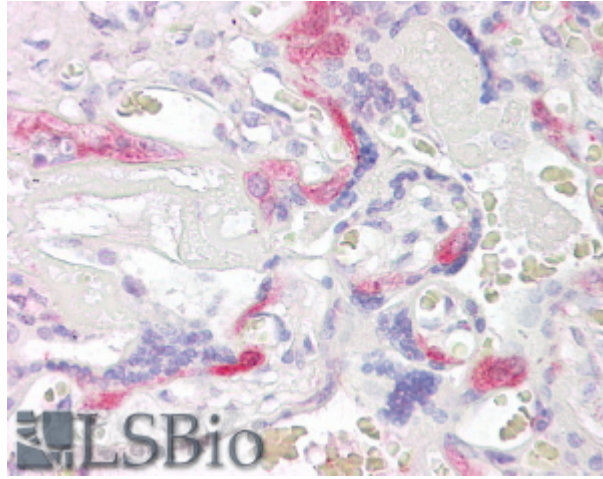
Western blot: Preliminary experiments gave no signal but low background in Jurkat and human placenta extracts at up to 1µg/ml.

IHC: Paraffin embedded Human Placenta and Prostate. Recommended concentration: 3.75µg/ml.

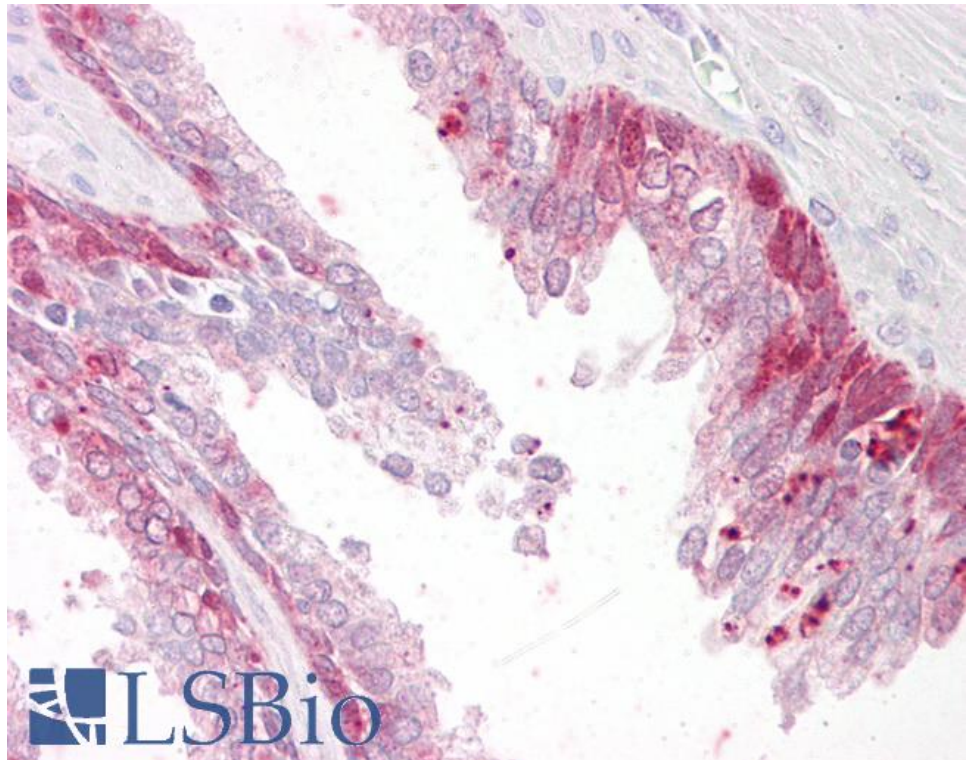
Species Reactivity

Tested: Human

Expected from sequence similarity: Human



EB06184 (3.75µg/ml) staining of paraffin embedded Human Placenta. Steamed antigen retrieval with citrate buffer pH 6, AP-staining.



EB06184 (3.75µg/ml) staining of paraffin embedded Human Prostate. Steamed antigen retrieval with citrate buffer pH 6, AP-staining.