



UK Office

Everest Biotech Ltd

Cherwell Innovation Centre
77 Heyford Park
Upper Heyford
Oxfordshire
OX25 5HD
UK

Enquiries:

info@everestbiotech.com

Sales:

sales@everestbiotech.com

Tech support:

support@everestbiotech.com

Tel: +44 (0)1869 238326

Fax: +44 (0)1869 238327

US Office

Everest Biotech c/o Abcore

405 Maple Street, Suite A106
Ramona,
CA 92065
USA

Inquiries:

info@everestbiotech.com

Sales:

usasales@everestbiotech.com

Tech support:

support@everestbiotech.com

Tel: 888-320-4628 (toll-free)

Fax: 888-841-9041

www.everestbiotech.com

**Research Use Only. Not for
diagnostic or therapeutic use.**

EB11590 - Goat Anti-PHOX2A (aa165-179) Antibody

Size: 100µg specific antibody in 200µl



Target Protein

Principal Names: aristaless homeobox homolog, aristaless homeobox protein homolog, ARIX, arix homeodomain protein, ARIX1 homeodomain protein, CFEOM2, FEOM2, MGC52227, NCAM2, OTTHUMP00000237214, paired mesoderm homeobox protein 2A, paired-like homeobox 2a, PHOX2A, PMX2A

Official Symbol: PHOX2A

Accession Number(s): NP_005160.2

Human GeneID(s): [401](#)

Immunogen

Peptide with sequence KGEARCSSEDDDSKE, from the internal region of the protein sequence according to NP_005160.2.

Please note the [peptide](#) is available for sale.

Purification and Storage

Purified from goat serum by ammonium sulphate precipitation followed by antigen affinity chromatography using the immunizing peptide.

Supplied at 0.5 mg/ml in Tris saline, 0.02% sodium azide, pH7.3 with 0.5% bovine serum albumin.

Aliquot and store at -20°C. Minimize freezing and thawing.

Applications Tested

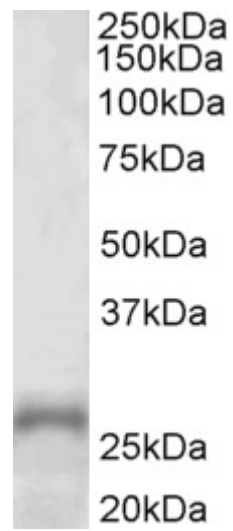
Peptide ELISA: antibody detection limit dilution 1:32000.

Western blot: Approx 26kDa band observed in Human Adrenal Gland and Uterus lysates (calculated MW of 29.7kDa according to NP_005160.2). Recommended concentration: 1-3µg/ml.

Species Reactivity

Tested: Human

Expected from sequence similarity: Human, Dog, Pig, Cow



EB11590 (1 μ g/ml) staining of Human Adrenal Gland lysate (35 μ g protein in RIPA buffer). Primary incubation was 1 hour. Detected by chemiluminescence.