



Everest Biotech Ltd
Cherwell Innovation Centre
77 Heyford Park
Upper Heyford
Oxfordshire
OX25 5HD, United Kingdom

everestbiotech.com

sales@everestbiotech.com

support@everestbiotech.com

Tel +44 1869 238326

Fax +44 1869 238327

Research Use Only. Not for diagnostic or therapeutic use.

Storage: For long-term storage keep aliquots at -20°C. (Store no longer than 12 months at 4°C). Minimize freezing and thawing.

EB06291 - Goat Anti-PIK3C2A Antibody

Size: 100µg specific antibody in 200µl



Target Protein

Principal Names: MGC142218, DKFZp686L193, C2-containing phosphatidylinositol kinase, phosphoinositide-3-kinase, class 2, alpha polypeptide, PI3-K-C2(ALPHA), PI3K-C2alpha, PI3-K-C2A, CPK, PIK3C2A

Official Symbol: PIK3C2A

Accession Number(s): NP_002636.2

Human GeneID(s): [5286](#)

Non-Human GeneID(s): 18704 (mouse)

Immunogen

Peptide with sequence C-TVKWYQLTAATYL, from the C Terminus of the protein sequence according to NP_002636.2.

Please note the [peptide](#) is available for sale.

Purification and Storage

Purified from goat serum by ammonium sulphate precipitation followed by antigen affinity chromatography using the immunizing peptide.

Supplied at 0.5 mg/ml in Tris saline, 0.02% sodium azide, pH7.3 with 0.5% bovine serum albumin.

Aliquot and store at -20°C. Minimize freezing and thawing.

Applications Tested

Peptide ELISA: antibody detection limit dilution 1:32000.

Western blot: Preliminary experiments gave no signal but low background in Human Testis and Molt-4 lysates at up to 1µg/ml. We would appreciate any feedback from people in the field - have any results been reported with other antibodies/lysates?

IHC: In paraffin embedded Human Heart shows strong staining of the capillary network and patterned staining of the myocardial fibres in transverse section. Recommended concentration, 5-10µg/ml.

Species Reactivity

Tested: Human

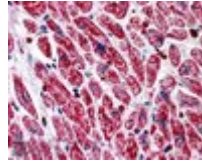
Expected from sequence similarity: Human, Mouse, Dog

Background Reference

Molz L, Chen YW, Hirano M, Williams LT.

Cpk is a novel class of Drosophila PtdIns 3-kinase containing a C2 domain. J Biol Chem. 1996 Jun 7;271(23):13892-9.

PMID: 8662856



EB06291 (5 μ g/ml) staining of paraffin embedded Human Heart. Steamed antigen retrieval with citrate buffer pH 6, AP-staining.