



UK Office

Everest Biotech Ltd

Cherwell Innovation Centre
77 Heyford Park
Upper Heyford
Oxfordshire
OX25 5HD
UK

Enquiries:

info@everestbiotech.com

Sales:

sales@everestbiotech.com

Tech support:

support@everestbiotech.com

Tel: +44 (0)1869 238326

Fax: +44 (0)1869 238327

US Office

Everest Biotech c/o Abcore

405 Maple Street, Suite A106
Ramona,
CA 92065
USA

Inquiries:

info@everestbiotech.com

Sales:

usasales@everestbiotech.com

Tech support:

support@everestbiotech.com

Tel: 888-320-4628 (toll-free)

Fax: 888-841-9041

www.everestbiotech.com

**Research Use Only. Not for
diagnostic or therapeutic use.**

EB07512 - Goat Anti-PIK3CA / P110alpha Antibody

Size: 100µg specific antibody in 200µl

Target Protein

Principal Names: PIK3CA, p110-alpha, phosphoinositide-3-kinase, catalytic, alpha polypeptide, MGC142161, MGC142163, PI3K, PI3-kinase p110 subunit alpha, PtdIns-3-kinase p110, phosphatidylinositol 3-kinase, catalytic, 110-KD, alpha, phosphatidylinositol 3-kinase, catalytic, alpha polypeptide, phosphatidylinositol-4,5-bisphosphate 3-kinase catalytic subunit, alpha isoform

Official Symbol: PIK3CA

Accession Number(s): NP_006209.2

Human GeneID(s): [5290](#)

Non-Human GeneID(s): 18706 (mouse), 170911 (rat)

Immunogen

Peptide with sequence C-HQWLKDKNKGEIYD, from the internal region of the protein sequence according to NP_006209.2.

Please note the [peptide](#) is available for sale.

Purification and Storage

Purified from goat serum by ammonium sulphate precipitation followed by antigen affinity chromatography using the immunizing peptide.

Supplied at 0.5 mg/ml in Tris saline, 0.02% sodium azide, pH7.3 with 0.5% bovine serum albumin.

Aliquot and store at -20°C. Minimize freezing and thawing.

Applications Tested

Peptide ELISA: antibody detection limit dilution 1:128000.

Western blot: Preliminary experiments in lysates of cell lines A431, HeLa and Jurkat gave no specific signal but low background (at antibody concentration up to 1µg/ml).

IHC: In paraffin embedded Human Brain (Cerebral Cortex) shows cytoplasm stained in the cell bodies. Recommended concentration: 2-3µg/ml. Paraffin embedded Human Heart. Recommended concentration: 5µg/ml. This antibody has been successfully used in IHC on Human in the following paper: Abubaker J et al. (2009) PMID: 19638206.

Species Reactivity

Tested: Human

Expected from sequence similarity: Human, Mouse, Rat, Dog, Cow

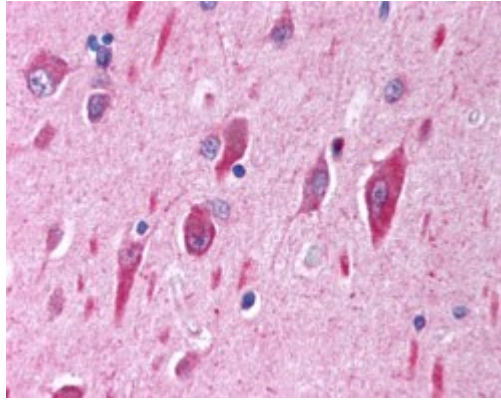
Specific Reference

This antibody has been successfully used in IHC on Human:

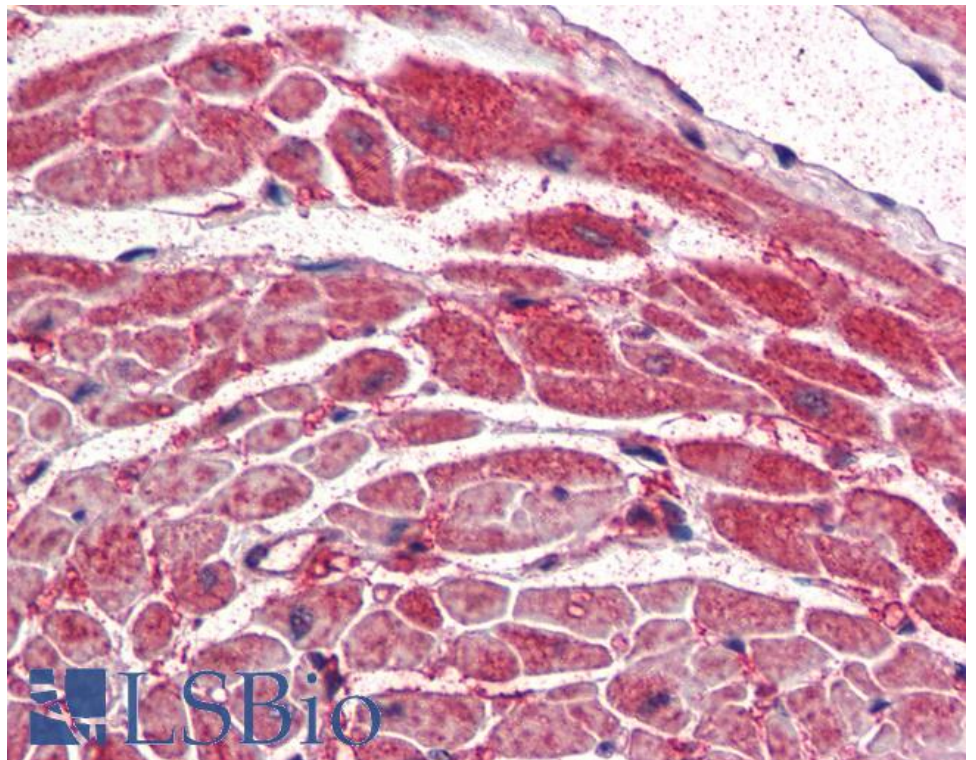
Abubaker J, Bavi P, Al-Haqawi W, Jehan Z, Munkarah A, Uddin S, Al-Kuraya KS. PIK3CA alterations in Middle Eastern ovarian cancers.

Mol Cancer. 2009 Jul 28;8:51.

PMID: 19638206



EB07512 (2.5µg/ml) staining of paraffin embedded Human Brain (Cerebellar Cortex). Steamed antigen retrieval with citrate buffer pH 6, AP-staining.



EB07512 (5µg/ml) staining of paraffin embedded Human Heart. Steamed antigen retrieval with citrate buffer pH 6, AP-staining.