



## UK Office

### Everest Biotech Ltd

Cherwell Innovation Centre  
77 Heyford Park  
Upper Heyford  
Oxfordshire  
OX25 5HD  
UK

Enquiries:

[info@everestbiotech.com](mailto:info@everestbiotech.com)

Sales:

[sales@everestbiotech.com](mailto:sales@everestbiotech.com)

Tech support:

[support@everestbiotech.com](mailto:support@everestbiotech.com)

Tel: +44 (0)1869 238326

[www.everestbiotech.com](http://www.everestbiotech.com)

**Research Use Only. Not for  
diagnostic or therapeutic use.**

## EB07468 - Goat Anti-PIN1 Antibody

Size: 100µg specific antibody in 200µl



### Target Protein

**Principal Names:** PIN1, protein (peptidylprolyl cis/trans isomerase) NIMA-interacting 1, DOD, UBL5, peptidyl-prolyl cis/trans isomerase, NIMA-interacting, prolyl isomerase, protein (peptidyl-prolyl cis/trans isomerase) NIMA-interacting 1

**Official Symbol:** PIN1

**Accession Number(s):** NP\_006212.1

**Human GeneID(s):** [5300](#)

**Non-Human GeneID(s):** 23988 (mouse), 298696 (rat)

### Immunogen

Peptide with sequence C-KHSQSRRPSSWRQEKITR, from the internal region of the protein sequence according to NP\_006212.1.

Please note the [peptide](#) is available for sale.

### Purification and Storage

Purified from goat serum by ammonium sulphate precipitation followed by antigen affinity chromatography using the immunizing peptide.

Supplied at 0.5 mg/ml in Tris saline, 0.02% sodium azide, pH7.3 with 0.5% bovine serum albumin.

Aliquot and store at -20°C. Minimize freezing and thawing.

### Applications Tested

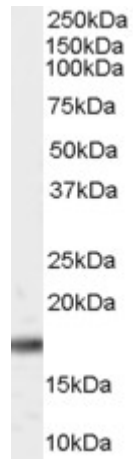
**Peptide ELISA:** antibody detection limit dilution 1:128000.

**Western blot:** Approx 17kDa band observed in Rat Brain lysates (calculated MW of 18.2kDa according to Human NP\_006212.1 and 18.2kDa according to Mouse NP\_075860). Recommended concentration: 0.2-0.6µg/ml. Preliminary testing was unsuccessful on Mouse Brain for this particular batch.

### Species Reactivity

**Tested:** Rat

**Expected from sequence similarity:** Human, Mouse, Rat, Dog



EB07468 (0.2 $\mu$ g/ml) staining of Rat Brain lysate (35 $\mu$ g protein in RIPA buffer). Primary incubation was 1 hour.  
Detected by chemiluminescence.