



UK Office

Everest Biotech Ltd

Cherwell Innovation Centre
77 Heyford Park
Upper Heyford
Oxfordshire
OX25 5HD
UK

Enquiries:

info@everestbiotech.com

Sales:

sales@everestbiotech.com

Tech support:

support@everestbiotech.com

Tel: +44 (0)1869 238326

www.everestbiotech.com

**Research Use Only. Not for
diagnostic or therapeutic use.**

EB07940 - Goat Anti-PINK1 Antibody

Size: 100µg specific antibody in 200µl



Target Protein

Principal Names: PINK1, PTEN induced putative kinase 1, BRPK, FLJ27236, PARK6, protein kinase BRPK, serine/threonine-protein kinase PINK1

Official Symbol: PINK1

Accession Number(s): NP_115785.1

Human GeneID(s): [65018](#)

Non-Human GeneID(s): 68943 (mouse), 298575 (rat)

Immunogen

Peptide with sequence C-QGKAHLESRSYQEAQ, from the internal region of the protein sequence according to NP_115785.1.

Please note the [peptide](#) is available for sale.

Purification and Storage

Purified from goat serum by ammonium sulphate precipitation followed by antigen affinity chromatography using the immunizing peptide.

Supplied at 0.5 mg/ml in Tris saline, 0.02% sodium azide, pH7.3 with 0.5% bovine serum albumin.

Aliquot and store at -20°C. Minimize freezing and thawing.

Applications Tested

Peptide ELISA: antibody detection limit dilution 1:16000.

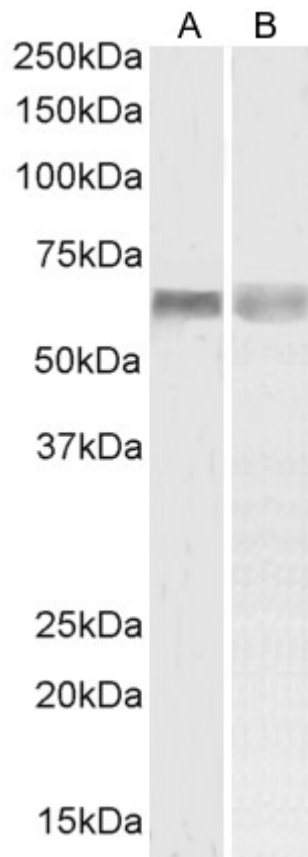
Western blot: Approx. 60-65kDa band observed in lysates of cell lines Jurkat and HeLa (calculated MW of 62.8kDa according to NP_115785.1). Recommended concentration: 1-2µg/ml. Primary incubation 1 hour at room temperature.

Flow Cytometry: Flow cytometric analysis of Jurkat cells. Recommended concentration: 10ug/ml.

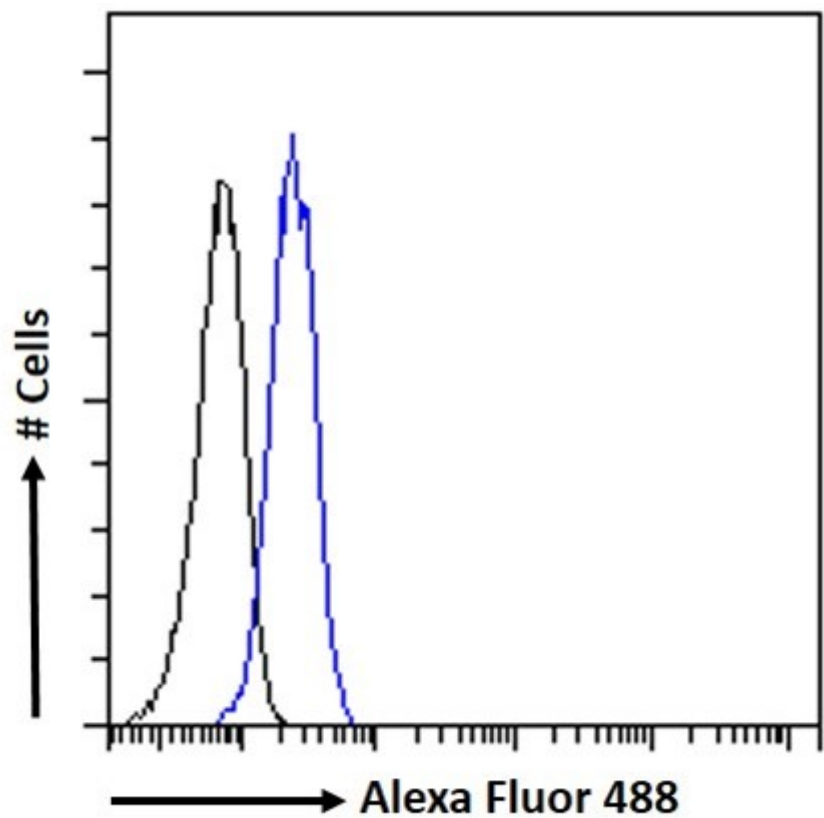
Species Reactivity

Tested: Human

Expected from sequence similarity: Human



EB07940 (1 μ g/ml) staining of Jurkat (A) and (1.5 μ g/ml) HeLa (B) cell lysate (35 μ g protein in RIPA buffer). Detected by chemiluminescence.



EB07940 Flow cytometric analysis of paraformaldehyde fixed Jurkat cells (blue line), permeabilized with 0.5% Triton. Primary incubation 1hr (10 μ g/ml) followed by Alexa Fluor 488 secondary antibody (1 μ g/ml). IgG control:

Unimmunized goat IgG (black line) followed by Alexa Fluor 488 secondary antibody.