



Everest Biotech Ltd  
Cherwell Innovation Centre  
77 Heyford Park  
Upper Heyford  
Oxfordshire  
OX25 5HD, United Kingdom

[everestbiotech.com](http://everestbiotech.com)

[sales@everestbiotech.com](mailto:sales@everestbiotech.com)

[support@everestbiotech.com](mailto:support@everestbiotech.com)

Tel +44 1869 238326

Fax +44 1869 238327

**Research Use Only. Not for diagnostic or therapeutic use.**

Storage: For long-term storage keep aliquots at -20°C. (Store no longer than 12 months at 4°C). Minimize freezing and thawing.

## EB06319 - Goat Anti-PITPN / PITP alpha Antibody

Size: 100µg specific antibody in 200µl



### Target Protein

**Principal Names:** phosphatidylinositol transfer protein, phosphatidylinositol transfer protein, PITPNB, PITP alpha, PITPN

**Official Symbol:** PITPN

**Accession Number(s):** NP\_006215.1

**Human GeneID(s):** [5306](#)

**Non-Human GeneID(s):** 18738 (mouse), 29525 (rat)

### Immunogen

Peptide with sequence C-RQKDPVKGMTADD, from the C Terminus of the protein sequence according to NP\_006215.1.

Please note the [peptide](#) is available for sale.

### Purification and Storage

Purified from goat serum by ammonium sulphate precipitation followed by antigen affinity chromatography using the immunizing peptide.

Supplied at 0.5 mg/ml in Tris saline, 0.02% sodium azide, pH7.3 with 0.5% bovine serum albumin.

Aliquot and store at -20°C. Minimize freezing and thawing.

### Applications Tested

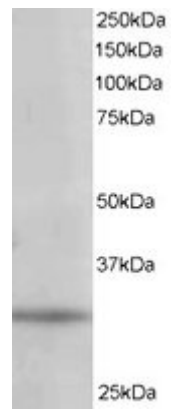
**Peptide ELISA:** antibody detection limit dilution 1:4000.

**Western blot:** Approx 32kDa band observed in 293 and Human Liver lysates (predicted MW of 31kDa according to NP\_006215). Recommended for use at 1-3µg/ml.

### Species Reactivity

**Tested:** Human

**Expected from sequence similarity:** Human, Mouse, Rat, Dog, Cow



EB06319 staining (1µg/ml) of 293 lysate (RIPA buffer, 35µg total protein per lane). Primary incubated for 1 hour.  
Detected by western blot using chemiluminescence.