



UK Office

Everest Biotech Ltd

Cherwell Innovation Centre
77 Heyford Park
Upper Heyford
Oxfordshire
OX25 5HD
UK

Enquiries:

info@everestbiotech.com

Sales:

sales@everestbiotech.com

Tech support:

support@everestbiotech.com

Tel: +44 (0)1869 238326

Fax: +44 (0)1869 238327

US Office

Everest Biotech c/o Abcore

405 Maple Street, Suite A106
Ramona,
CA 92065
USA

Inquiries:

info@everestbiotech.com

Sales:

usasales@everestbiotech.com

Tech support:

support@everestbiotech.com

Tel: 888-320-4628 (toll-free)

Fax: 888-841-9041

www.everestbiotech.com

**Research Use Only. Not for
diagnostic or therapeutic use.**

EB11002 - Goat Anti-PKD1 (aa2281-2292) Antibody

Size: 100µg specific antibody in 200µl



Target Protein

Principal Names: PKD1, polycystic kidney disease 1 (autosomal dominant), PBP, Pc-1, TRPP1, autosomal dominant polycystic kidney disease 1 protein, polycystic kidney disease-associated protein, polycystin 1, polycystin-1

Official Symbol: PKD1

Accession Number(s): NP_001009944.2; NP_000287.3

Human GeneID(s): [5310](#)

Non-Human GeneID(s): 18763 (mouse), 24650 (rat)

Important Comments: This antibody is expected to recognize both reported isoforms (NP_001009944.2; NP_000287.3).

Immunogen

Peptide with sequence C-KSYDPNLEDGDQT, from the internal region of the protein sequence according to NP_001009944.2; NP_000287.3.

Please note the [peptide](#) is available for sale.

Purification and Storage

Purified from goat serum by ammonium sulphate precipitation followed by antigen affinity chromatography using the immunizing peptide.

Supplied at 0.5 mg/ml in Tris saline, 0.02% sodium azide, pH7.3 with 0.5% bovine serum albumin.

Aliquot and store at -20°C. Minimize freezing and thawing.

Applications Tested

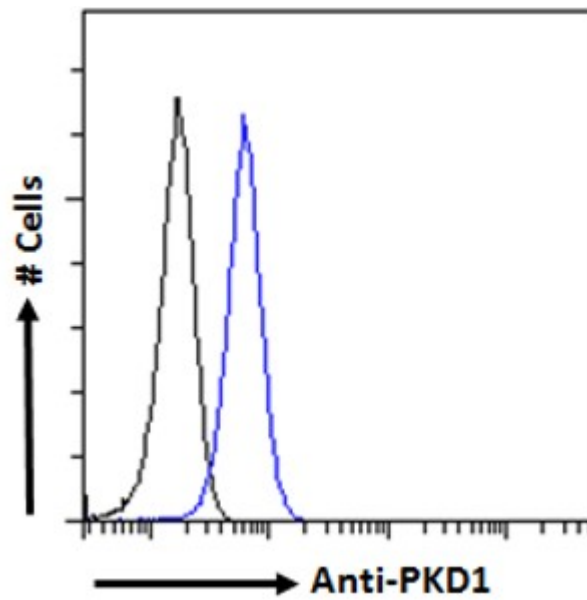
Peptide ELISA: antibody detection limit dilution 1:128000.

Flow Cytometry: Flow cytometric analysis of HEK293 cells. Recommended concentration: 10ug/ml.

Species Reactivity

Tested: Human

Expected from sequence similarity: Human, Mouse, Rat, Dog, Pig



EB11002 Flow cytometric analysis of paraformaldehyde fixed HEK293 cells (blue line), permeabilized with 0.5% Triton. Primary incubation 1hr (10ug/ml) followed by Alexa Fluor 488 secondary antibody (1ug/ml). IgG control: Unimmunized goat IgG (black line) followed by Alexa Fluor 488 secondary antibody.