



UK Office

Everest Biotech Ltd

Cherwell Innovation Centre
77 Heyford Park
Upper Heyford
Oxfordshire
OX25 5HD
UK

Enquiries:

info@everestbiotech.com

Sales:

sales@everestbiotech.com

Tech support:

support@everestbiotech.com

Tel: +44 (0)1869 238326

www.everestbiotech.com

**Research Use Only. Not for
diagnostic or therapeutic use.**

EB12467 - Goat Anti-PLA2G2A Antibody

Size: 100µg specific antibody in 200µl



Target Protein

Principal Names: PLA2G2A, phospholipase A2, group IIA (platelets, synovial fluid), MOM1, PLA2, PLA2B, PLA2L, PLA2S, PLAS1, sPLA2, GIIC sPLA2, NPS-PLA2, group IIA phospholipase A2, non-pancreatic secretory phospholipase A2, phosphatidylcholine 2-acylhydrolase 2A, phospholi

Official Symbol: PLA2G2A

Accession Number(s): NP_000291.1

Human GeneID(s): [5320](#)

Important Comments: Reported variants represent identical protein: NP_001155199.1, NP_000291.1, NP_001155201.1, NP_001155200.1.

Immunogen

Peptide with sequence C-SYKFSNSGSRIT, from the internal region of the protein sequence according to NP_000291.1.

Please note the [peptide](#) is available for sale.

Purification and Storage

Purified from goat serum by ammonium sulphate precipitation followed by antigen affinity chromatography using the immunizing peptide.

Supplied at 0.5 mg/ml in Tris saline, 0.02% sodium azide, pH7.3 with 0.5% bovine serum albumin.

Aliquot and store at -20°C. Minimize freezing and thawing.

Applications Tested

Peptide ELISA: antibody detection limit dilution 1:8000.

Western blot: Approx 19kDa band observed in Human Placenta lysates (calculated MW of 16.1kDa according to NP_000291.1). Recommended concentration: 0.1-0.3µg/ml.

Primary incubation was 1 hour.

IHC: Paraffin embedded Human Liver and Small Intestine. Recommended concentration: 5µg/ml.

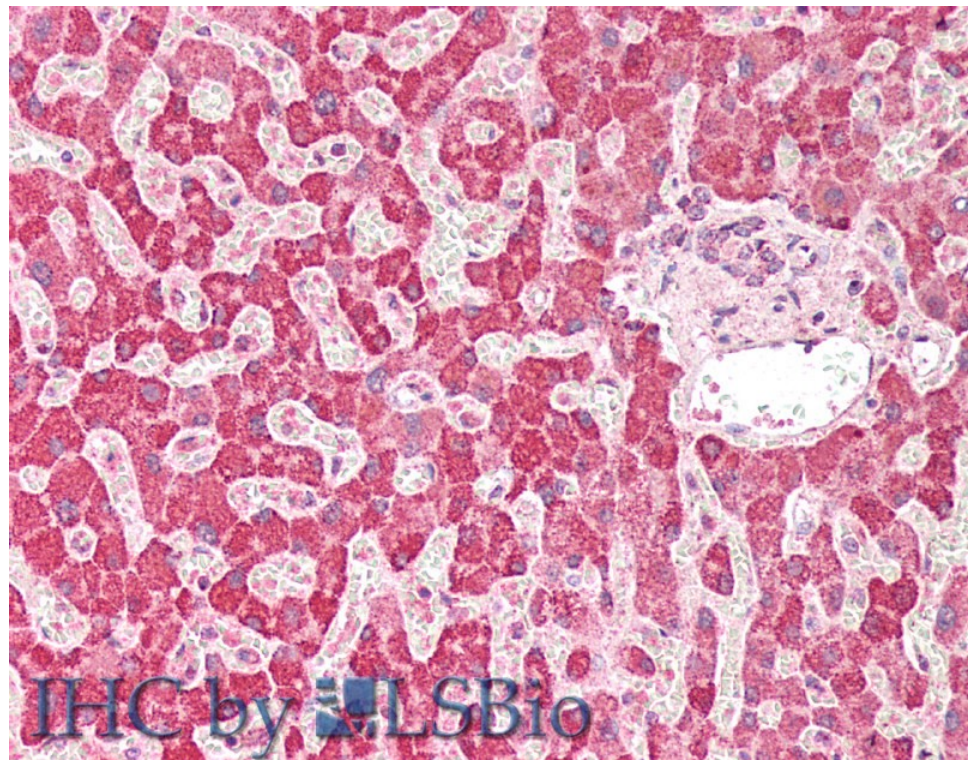
Species Reactivity

Tested: Human

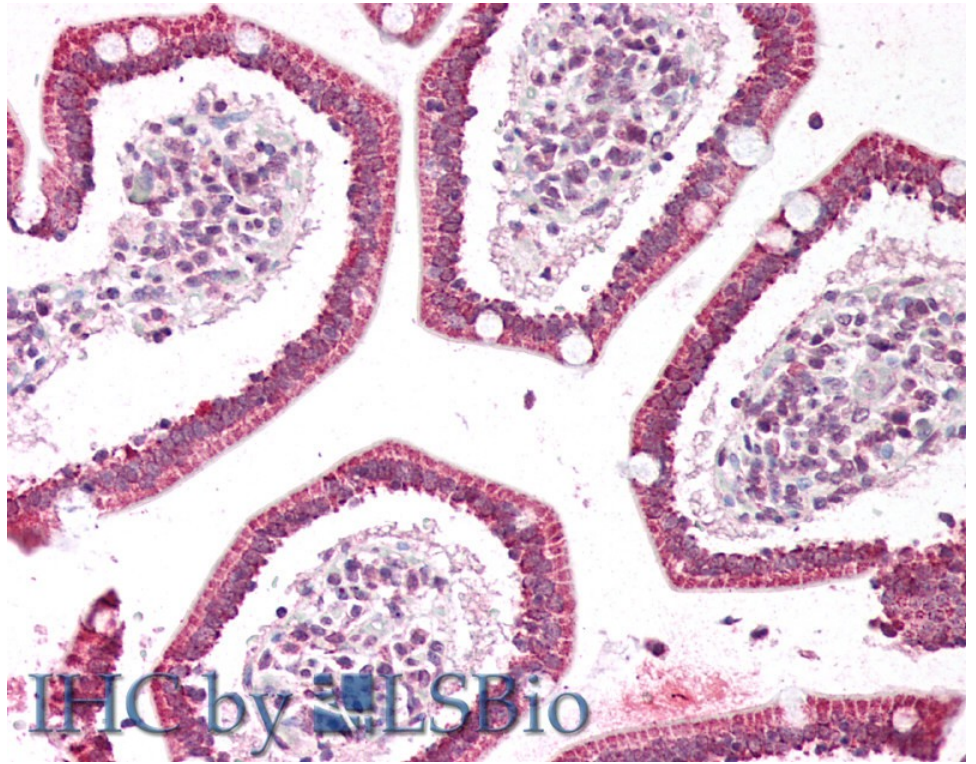
Expected from sequence similarity: Human



EB12467 (0.1µg/ml) staining of Placenta lysate (35µg protein in RIPA buffer). Detected by chemiluminescence.



EB12467 (5µg/ml) staining of paraffin embedded Human Liver. Steamed antigen retrieval with citrate buffer pH 6, AP-staining.



EB12467 (5µg/ml) staining of paraffin embedded Human Small Intestine. Steamed antigen retrieval with citrate buffer pH 6, AP-staining.