

## UK Office

### Everest Biotech Ltd

Cherwell Innovation Centre  
77 Heyford Park  
Upper Heyford  
Oxfordshire  
OX25 5HD  
UK

Enquiries:

[info@everestbiotech.com](mailto:info@everestbiotech.com)

Sales:

[sales@everestbiotech.com](mailto:sales@everestbiotech.com)

Tech support:

[support@everestbiotech.com](mailto:support@everestbiotech.com)

Tel: +44 (0)1869 238326

[www.everestbiotech.com](http://www.everestbiotech.com)

**Research Use Only. Not for  
diagnostic or therapeutic use.**

## EB09426 - Goat Anti-PLA2R1 Antibody

Size: 100µg specific antibody in 200µl



### Target Protein

**Principal Names:** PLA2R1, phospholipase A2 receptor 1, 180kDa, CLEC13C, PLA2-R, PLA2G1R, PLA2IR, PLA2R, phospholipase A2 receptor 1

**Official Symbol:** PLA2R1

**Accession Number(s):** NP\_031392.3; NP\_001007268.1; NP\_001182570.1

**Human GeneID(s):** [22925](#)

**Important Comments:** This antibody is expected to recognize all reported isoforms (NP\_031392.3; NP\_001007268.1; NP\_001182570.1).

### Immunogen

Peptide with sequence C-EKKKDTPKQHGT, from the Internal region of the protein sequence according to NP\_031392.3; NP\_001007268.1; NP\_001182570.1.

Please note the [peptide](#) is available for sale.

### Purification and Storage

Purified from goat serum by ammonium sulphate precipitation followed by antigen affinity chromatography using the immunizing peptide.

Supplied at 0.5 mg/ml in Tris saline, 0.02% sodium azide, pH7.3 with 0.5% bovine serum albumin.

Aliquot and store at -20°C. Minimize freezing and thawing.

### Applications Tested

**Peptide ELISA:** antibody detection limit dilution 1:1000.

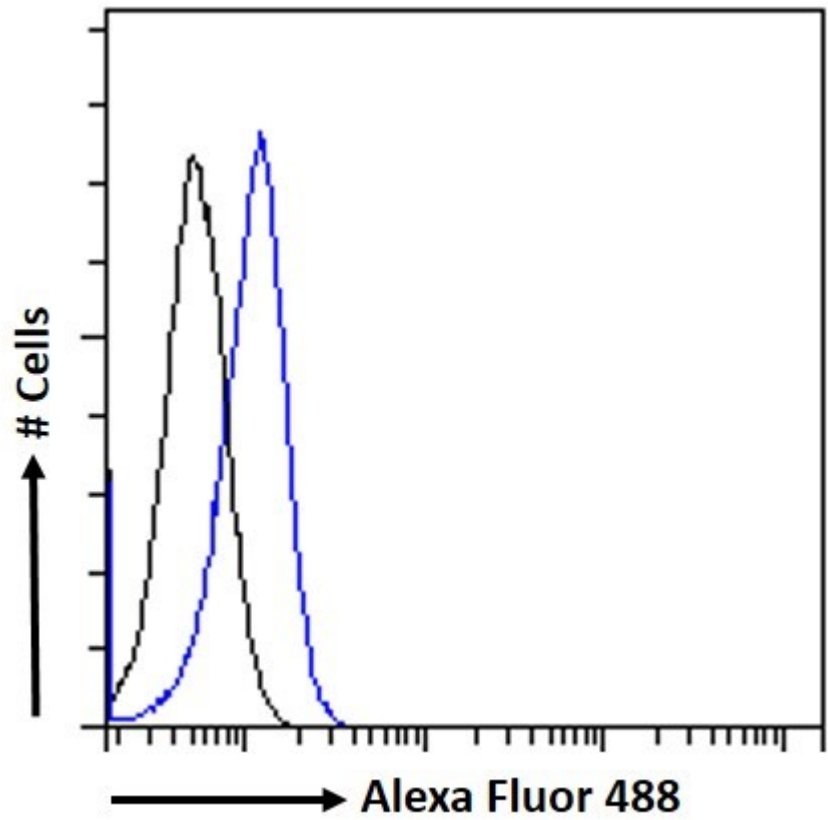
**Western blot:** Preliminary testing showed a band at approx 150kDa in HeLa cell lysate after 2µg/ml antibody staining (calculated MW of 153kDa according to NP\_001007268.1 Primary incubation 1 hour at room temperature.

**Flow Cytometry:** Flow cytometric analysis of HeLa cells. Recommended concentration: 10ug/ml.

### Species Reactivity

**Tested:** Human

**Expected from sequence similarity:** Human, Dog, Pig



EB09426 Flow cytometric analysis of paraformaldehyde fixed HEK293 cells (blue line), permeabilized with 0.5% Triton. Primary incubation 1hr (10ug/ml) followed by Alexa Fluor 488 secondary antibody (1ug/ml). IgG control: Unimmunized goat IgG (black line) followed by Alexa Fluor 488 secondary antibody.