



## UK Office

### Everest Biotech Ltd

Cherwell Innovation Centre  
77 Heyford Park  
Upper Heyford  
Oxfordshire  
OX25 5HD  
UK

Enquiries:

[info@everestbiotech.com](mailto:info@everestbiotech.com)

Sales:

[sales@everestbiotech.com](mailto:sales@everestbiotech.com)

Tech support:

[support@everestbiotech.com](mailto:support@everestbiotech.com)

Tel: +44 (0)1869 238326

Fax: +44 (0)1869 238327

## US Office

### Everest Biotech c/o Abcore

405 Maple Street, Suite A106  
Ramona,  
CA 92065  
USA

Inquiries:

[info@everestbiotech.com](mailto:info@everestbiotech.com)

Sales:

[usasales@everestbiotech.com](mailto:usasales@everestbiotech.com)

Tech support:

[support@everestbiotech.com](mailto:support@everestbiotech.com)

Tel: 888-320-4628 (toll-free)

Fax: 888-841-9041

[www.everestbiotech.com](http://www.everestbiotech.com)

**Research Use Only. Not for  
diagnostic or therapeutic use.**

## EB05500-T - Goat Anti-Plakoglobin / Gamma-catenin Antibody - Trial

Size: 20µg specific antibody in 40µl



### Target Protein

**Principal Names:** JUP, GAMMA-CATENIN, junction plakoglobin, DP3, PDGB, PKGB, DPIII, ARVD12, CTNNG, catenin (cadherin-associated protein), gamma (80kD), catenin (cadherin-associated protein), gamma 80kDa, desmoplakin III, desmoplakin-3

**Official Symbol:** JUP

**Accession Number(s):** NP\_002221.1, NP\_068831.1

**Human GeneID(s):** [3728](#)

**Non-Human GeneID(s):** 16480 (mouse)

**Important Comments:** This antibody is expected to recognise both reported isoforms, as represented by NP\_002221.1 and NP\_068831.1.

### Immunogen

Peptide with sequence C-GLRPPYPTADHMLA, from the C Terminus of the protein sequence according to NP\_002221.1, NP\_068831.1.

Please note the [peptide](#) is available for sale.

### Purification and Storage

Purified from goat serum by ammonium sulphate precipitation followed by antigen affinity chromatography using the immunizing peptide.

Supplied at 0.5 mg/ml in Tris saline, 0.02% sodium azide, pH7.3 with 0.5% bovine serum albumin.

Aliquot and store at -20°C. Minimize freezing and thawing.

### Applications Tested

**Peptide ELISA:** antibody detection limit dilution 1:32000.

**Western blot:** Approx 80kDa band observed in lysates of cell lines A431 and NIH3T3 and in Rat Eye lysates (calculated MW of 81.7kDa according to Human NP\_002221.1 and Mouse NP\_034723.1). Recommended concentration: 0.1-0.3µg/ml.

**IHC:** Paraffin embedded Human Heart. Recommended concentration: 5µg/ml.

**Additional validation:** This antibody has been successfully used in the following paper: Sikorski et al. (2018) PMID: 30377371.

### Species Reactivity

**Tested:** Human, Mouse, Rat

**Expected from sequence similarity:** Human, Mouse, Rat, Dog, Pig

### Specific Reference

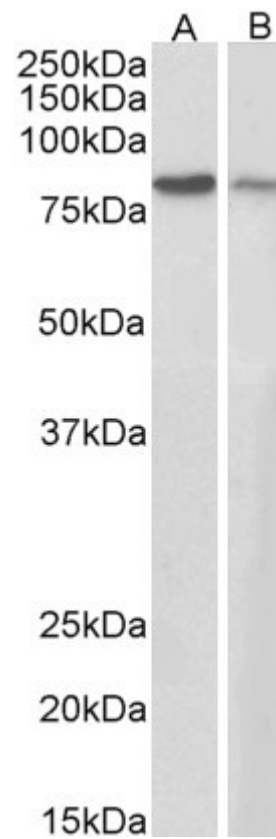
**This antibody has been successfully used in the following paper:**

Krzysztof Sikorski, Adi Mehta, Marit Inngjerdingen, Flourina Thakor, Simon Kling, Tomas Kalina, Tuula A. Nyman, Maria Ekman Stensland, Wei Zhou, Gustavo A. De Souza, Lars Holden, Jan Stuchly, Markus Templin and Fridtjof Lund-Johansen

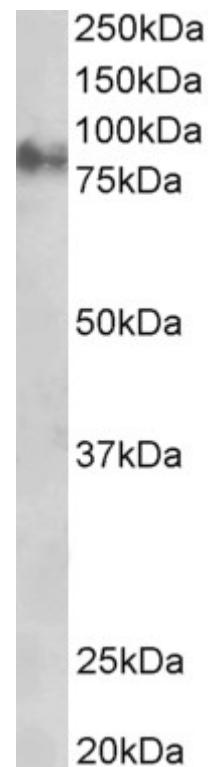
A high-throughput pipeline for validation of antibodies

Nat Methods. 2018 Nov;15(11):909-912

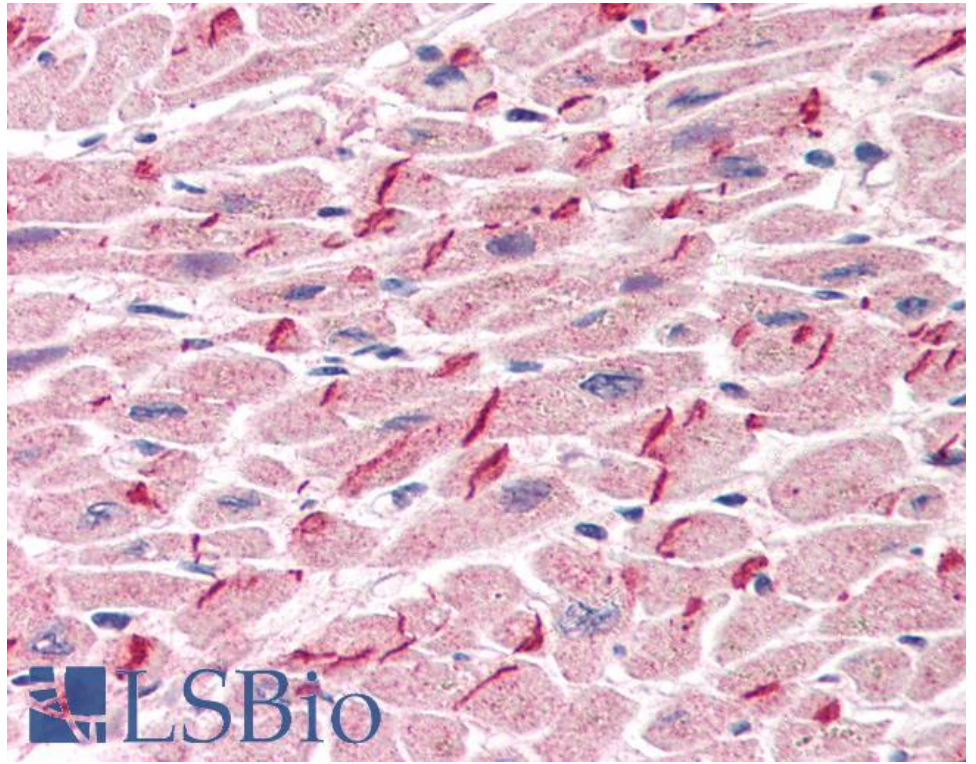
PMID: 30377371



EB05500 (0.3 $\mu$ g/ml) staining of A431 (A) and NIH3T3 (B) cell lysates (35 $\mu$ g protein in RIPA buffer). Primary incubation was 1 hour. Detected by chemiluminescence.



EB05500 staining (1 $\mu$ g/ml) of Rat Eye lysate (RIPA buffer, 35 $\mu$ g total protein per lane). Primary incubated for 1 hour. Detected by chemiluminescence.



EB05500 (5µg/ml) staining of paraffin embedded Human Heart. Steamed antigen retrieval with citrate buffer pH 6, AP-staining.