



UK Office

Everest Biotech Ltd

Cherwell Innovation Centre
77 Heyford Park
Upper Heyford
Oxfordshire
OX25 5HD
UK

Enquiries:

info@everestbiotech.com

Sales:

sales@everestbiotech.com

Tech support:

support@everestbiotech.com

Tel: +44 (0)1869 238326

Fax: +44 (0)1869 238327

US Office

Everest Biotech c/o Abcore

405 Maple Street, Suite A106
Ramona,
CA 92065
USA

Inquiries:

info@everestbiotech.com

Sales:

usasales@everestbiotech.com

Tech support:

support@everestbiotech.com

Tel: 888-320-4628 (toll-free)

Fax: 888-841-9041

www.everestbiotech.com

**Research Use Only. Not for
diagnostic or therapeutic use.**

EB05500 - Goat Anti-Plakoglobin / Gamma-catenin Antibody

Size: 100µg specific antibody in 200µl



Target Protein

Principal Names: JUP, GAMMA-CATENIN, junction plakoglobin, DP3, PDGB, PKGB, DPIII, ARVD12, CTNNG, catenin (cadherin-associated protein), gamma (80kD), catenin (cadherin-associated protein), gamma 80kDa, desmoplakin III, desmoplakin-3

Official Symbol: JUP

Accession Number(s): NP_002221.1, NP_068831.1

Human GeneID(s): [3728](#)

Non-Human GeneID(s): 16480 (mouse)

Important Comments: This antibody is expected to recognise both reported isoforms, as represented by NP_002221.1 and NP_068831.1.

Immunogen

Peptide with sequence C-GLRPPYPTADHMLA, from the C Terminus of the protein sequence according to NP_002221.1, NP_068831.1.

Please note the [peptide](#) is available for sale.

Purification and Storage

Purified from goat serum by ammonium sulphate precipitation followed by antigen affinity chromatography using the immunizing peptide.

Supplied at 0.5 mg/ml in Tris saline, 0.02% sodium azide, pH7.3 with 0.5% bovine serum albumin.

Aliquot and store at -20°C. Minimize freezing and thawing.

Applications Tested

Peptide ELISA: antibody detection limit dilution 1:32000.

Western blot: Approx 80kDa band observed in lysates of cell lines A431 and NIH3T3 and in Rat Eye lysates (calculated MW of 81.7kDa according to Human NP_002221.1 and Mouse NP_034723.1). Recommended concentration: 0.1-0.3µg/ml.

IHC: Paraffin embedded Human Heart. Recommended concentration: 5µg/ml.

Additional validation: This antibody has been successfully used in the following paper: Sikorski et al. (2018) PMID: 30377371.

Species Reactivity

Tested: Human, Mouse, Rat

Expected from sequence similarity: Human, Mouse, Rat, Dog, Pig

Specific Reference

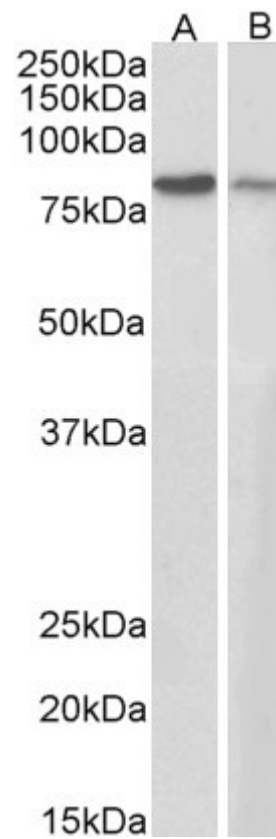
This antibody has been successfully used in the following paper:

Krzysztof Sikorski, Adi Mehta, Marit Inngjerdingen, Flourina Thakor, Simon Kling, Tomas Kalina, Tuula A. Nyman, Maria Ekman Stensland, Wei Zhou, Gustavo A. De Souza, Lars Holden, Jan Stuchly, Markus Templin and Fridtjof Lund-Johansen

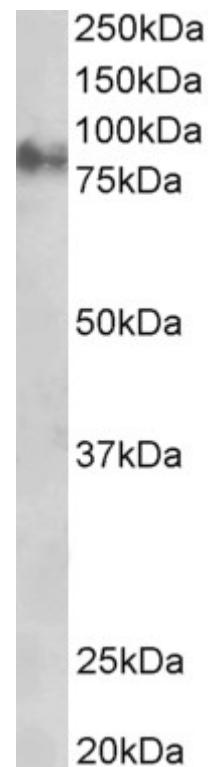
A high-throughput pipeline for validation of antibodies

Nat Methods. 2018 Nov;15(11):909-912

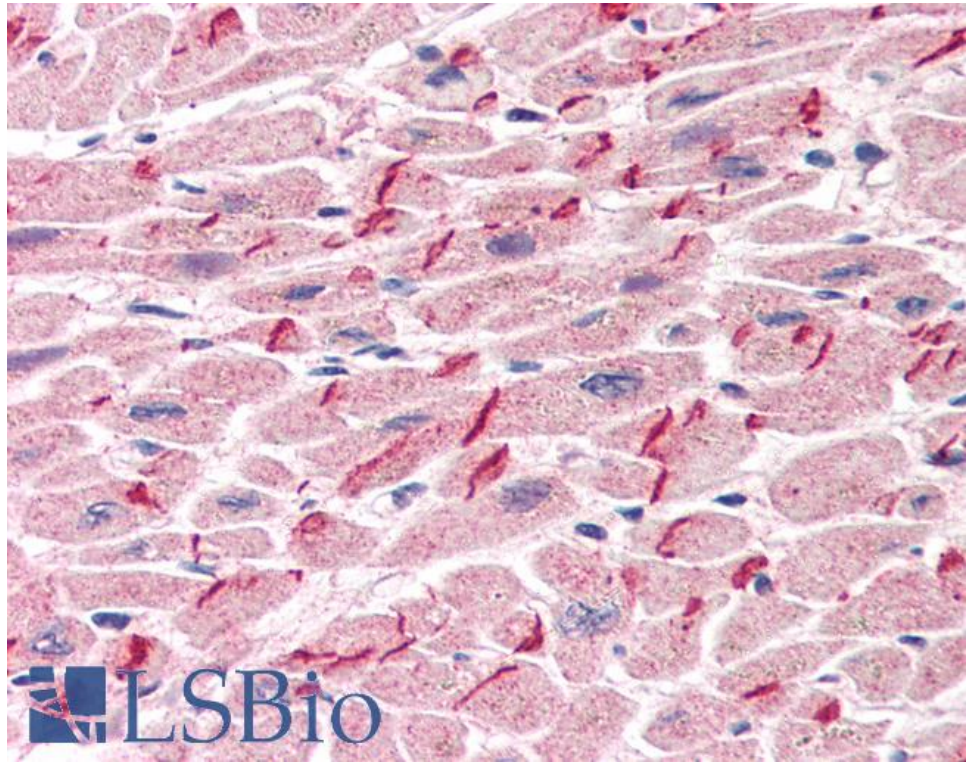
PMID: 30377371



EB05500 (0.3 μ g/ml) staining of A431 (A) and NIH3T3 (B) cell lysates (35 μ g protein in RIPA buffer). Primary incubation was 1 hour. Detected by chemiluminescence.



EB05500 staining (1 μ g/ml) of Rat Eye lysate (RIPA buffer, 35 μ g total protein per lane). Primary incubated for 1 hour. Detected by chemiluminescence.



EB05500 (5µg/ml) staining of paraffin embedded Human Heart. Steamed antigen retrieval with citrate buffer pH 6, AP-staining.