



UK Office

Everest Biotech Ltd

Cherwell Innovation Centre
77 Heyford Park
Upper Heyford
Oxfordshire
OX25 5HD
UK

Enquiries:

info@everestbiotech.com

Sales:

sales@everestbiotech.com

Tech support:

support@everestbiotech.com

Tel: +44 (0)1869 238326

Fax: +44 (0)1869 238327

US Office

Everest Biotech c/o Abcore

405 Maple Street, Suite A106
Ramona,
CA 92065
USA

Inquiries:

info@everestbiotech.com

Sales:

usasales@everestbiotech.com

Tech support:

support@everestbiotech.com

Tel: 888-320-4628 (toll-free)

Fax: 888-841-9041

www.everestbiotech.com

**Research Use Only. Not for
diagnostic or therapeutic use.**

EB05500-B - Goat Anti-Plakoglobin / Gamma-catenin, Biotinylated Antibody

Size: 100µg specific antibody in 200µl



Target Protein

Principal Names: JUP, junction plakoglobin, ARVD12, CTNNG, DP3, DPLI, PDGB, PKGB, catenin (cadherin-associated protein), gamma 80kDa, desmoplakin III, desmoplakin-3, catenin (cadherin-associated protein), gamma (80kD), GAMMA-CATENIN

Official Symbol: JUP

Accession Number(s): NP_002221.1, NP_068831.1

Human GeneID(s): [3728](#)

Non-Human GeneID(s): 16480 (mouse)

Important Comments: This antibody is expected to recognise both reported isoforms, as represented by NP_002221.1 and NP_068831.1.

Immunogen

Peptide with sequence C-GLRPPYPTADHMLA., from the C Terminus of the protein sequence according to NP_002221.1, NP_068831.1.

Please note the [peptide](#) is available for sale.

Purification and Storage

Purified from goat serum by ammonium sulphate precipitation followed by antigen affinity chromatography using the immunizing peptide.

Supplied at 0.5 mg/ml in Tris saline, 0.02% sodium azide, pH7.3 with 0.5% bovine serum albumin.

Aliquot and store at -20°C. Minimize freezing and thawing.

Applications Tested

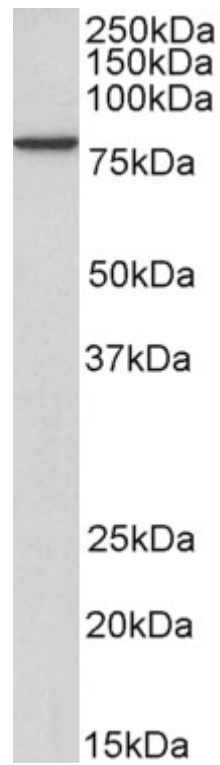
Peptide ELISA: antibody detection limit dilution 1:32000.

Western blot: Approx 80kDa band observed in lysates of cell line A431 (calculated MW of 81.7kDa according to Human NP_002221.1). See non-biotinylated parental product's datasheet for further QC data. Recommended concentration: 1-3µg/ml.

Species Reactivity

Tested: Human, Mouse, Rat

Expected from sequence similarity: Human



Biotinylated EB05500 (2 μ g/ml) staining of A431 lysate (35 μ g protein in RIPA buffer), exactly mirroring its parental non-biotinylated product. Primary incubation was 1 hour. Detected by chemiluminescence, using streptavidin-HRP and using NAP blocker as a substitute for skimmed milk.