



UK Office

Everest Biotech Ltd

Cherwell Innovation Centre
77 Heyford Park
Upper Heyford
Oxfordshire
OX25 5HD
UK

Enquiries:

info@everestbiotech.com

Sales:

sales@everestbiotech.com

Tech support:

support@everestbiotech.com

Tel: +44 (0)1869 238326

Fax: +44 (0)1869 238327

US Office

Everest Biotech c/o Abcore

405 Maple Street, Suite A106
Ramona,
CA 92065
USA

Inquiries:

info@everestbiotech.com

Sales:

usasales@everestbiotech.com

Tech support:

support@everestbiotech.com

Tel: 888-320-4628 (toll-free)

Fax: 888-841-9041

www.everestbiotech.com

**Research Use Only. Not for
diagnostic or therapeutic use.**

EB11174 - Goat Anti-PLCD3 (aa261-274) Antibody

Size: 100µg specific antibody in 200µl



Target Protein

Principal Names: 1-phosphatidylinositol-4,5-bisphosphate phosphodiesterase delta-3, MGC71172, phosphoinositide phospholipase C-delta-3, phospholipase C, delta 3, phospholipase C-delta-3, PLC delta3, PLC-delta-3, PLCD3

Official Symbol: PLCD3

Accession Number(s): NP_588614.1

Human GeneID(s): [113026](#)

Non-Human GeneID(s): 72469 (mouse), 287745 (rat)

Immunogen

Peptide with sequence C-HQYSGEDRVLSAPE, from the internal region of the protein sequence according to NP_588614.1.

Please note the [peptide](#) is available for sale.

Purification and Storage

Purified from goat serum by ammonium sulphate precipitation followed by antigen affinity chromatography using the immunizing peptide.

Supplied at 0.5 mg/ml in Tris saline, 0.02% sodium azide, pH7.3 with 0.5% bovine serum albumin.

Aliquot and store at -20°C. Minimize freezing and thawing.

Applications Tested

Peptide ELISA: antibody detection limit dilution 1:32000.

Western blot: Approx 85kDa band observed in lysates of cell lines A549 and Caco-2, and in preliminary testing of cell lines HeLa, HEK293 and U251 lysate (calculated MW of 89.3kDa according to NP_588614.1). Recommended concentration: 1-3µg/ml. Primary incubation 1 hour at room temperature.

IHC: Paraffin embedded Human Kidney and Testis. Recommended concentration: 6µg/ml.

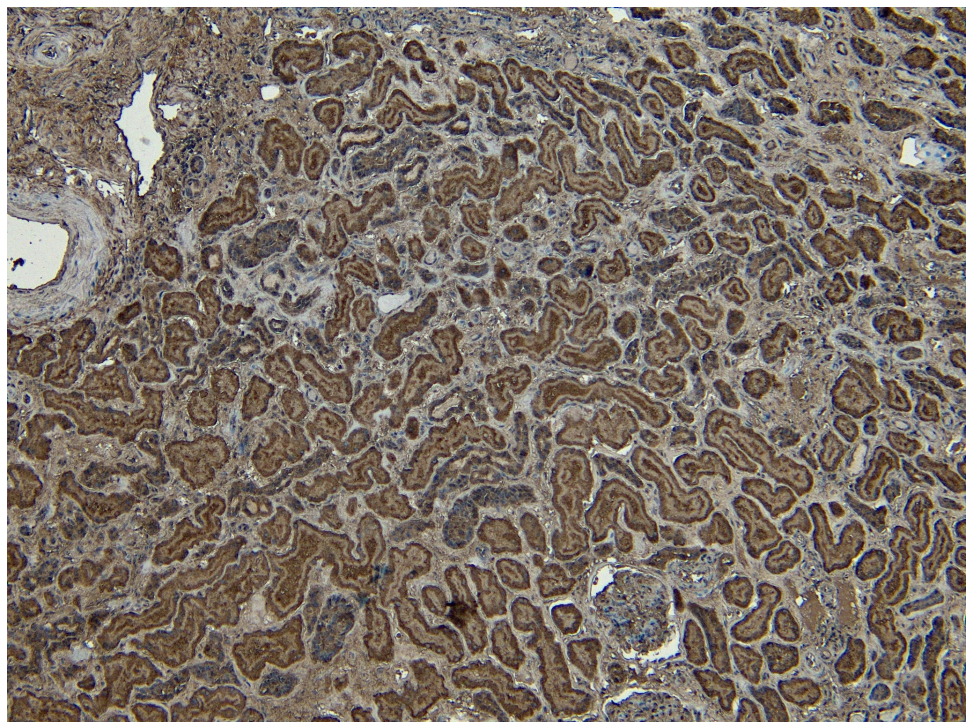
Species Reactivity

Tested: Human

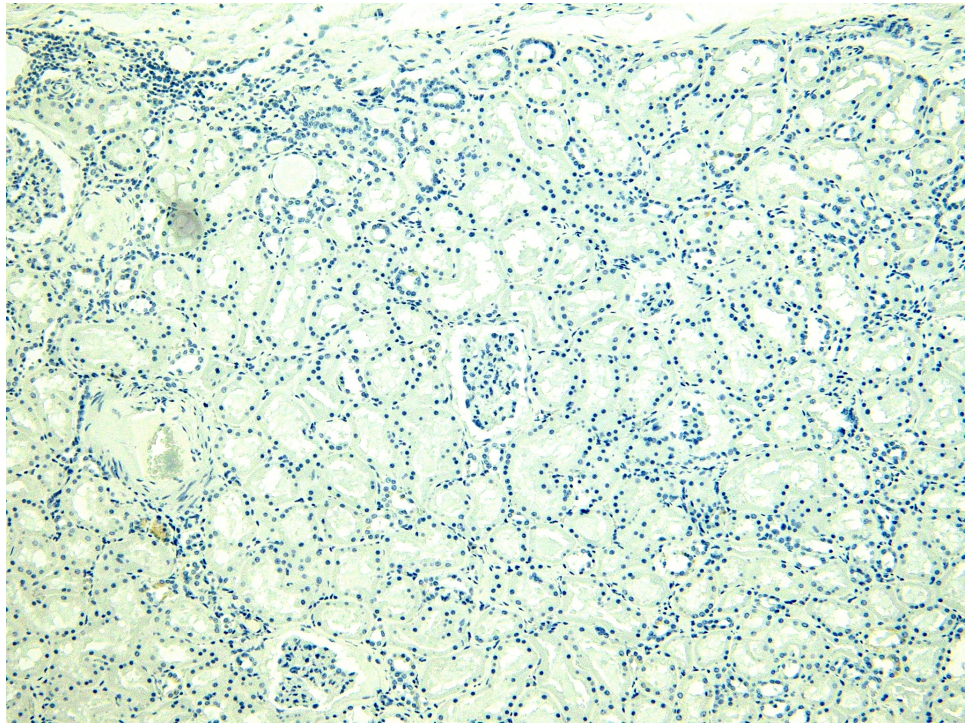
Expected from sequence similarity: Human, Mouse, Rat, Dog, Pig, Cow



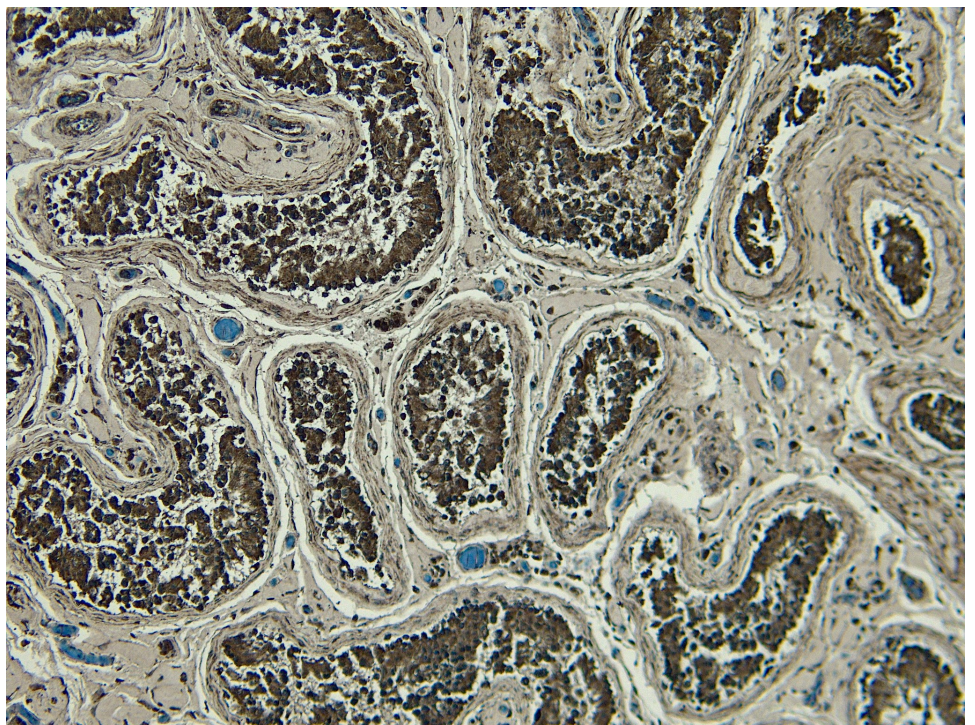
EB11174 (2 μ g/ml) staining of A549 (A) and Caco-2 (B) cell lysate (35 μ g protein in RIPA buffer). Detected by chemiluminescence.



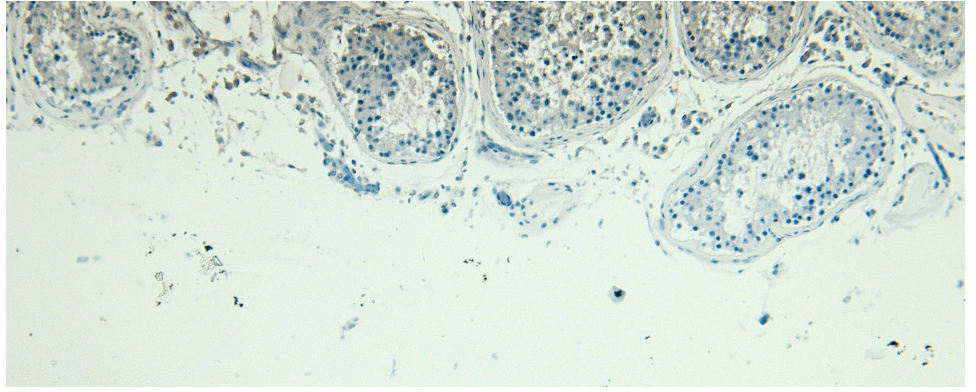
EB11174 (6 μ g/ml) staining of paraffin embedded Human Kidney. Heat induced antigen retrieval with citrate buffer pH 6, HRP-staining.



EB11174 Negative Control showing staining of paraffin embedded Human Kidney, with no primary antibody.



EB11174 (6µg/ml) staining of paraffin embedded Human Testis. Heat induced antigen retrieval with citrate buffer Ph 6, HRP-staining.



EB11174 Negative Control showing staining of paraffin embedded Human Testis, with no primary antibody.