



UK Office

Everest Biotech Ltd

Cherwell Innovation Centre
77 Heyford Park
Upper Heyford
Oxfordshire
OX25 5HD
UK

Enquiries:

info@everestbiotech.com

Sales:

sales@everestbiotech.com

Tech support:

support@everestbiotech.com

Tel: +44 (0)1869 238326

Fax: +44 (0)1869 238327

US Office

Everest Biotech c/o Abcore

405 Maple Street, Suite A106
Ramona,
CA 92065
USA

Inquiries:

info@everestbiotech.com

Sales:

usasales@everestbiotech.com

Tech support:

support@everestbiotech.com

Tel: 888-320-4628 (toll-free)

Fax: 888-841-9041

www.everestbiotech.com

**Research Use Only. Not for
diagnostic or therapeutic use.**

EB08421 - Goat Anti-Pleiotrophin Antibody

Size: 100µg specific antibody in 200µl



Target Protein

Principal Names: PTN, pleiotrophin (heparin binding growth factor 8, neurite growth-promoting factor 1), HARP, HBGF8, HBNF, NEGF1, heparin affin regulatory protein, heparin binding growth factor 8, heparin-binding growth-associated molecule, neurite growth-promoting factor 1, pleiotrophin, HBBM, HB-GAM, HBGF-8, HBNF-1, heparin-binding brain mitogen, heparin-binding growth factor 8, heparin-binding neurite outgrowth-promoting factor 1, OSF-1, osteoblast-specific factor 1

Official Symbol: PTN

Accession Number(s): NP_002816.1

Human GeneID(s): [5764](#)

Non-Human GeneID(s): 19242 (mouse), 24924 (rat)

Immunogen

Peptide with sequence C-KEGKKQEKMILD, from the C Terminus of the protein sequence according to NP_002816.1.

Please note the [peptide](#) is available for sale.

Purification and Storage

Purified from goat serum by ammonium sulphate precipitation followed by antigen affinity chromatography using the immunizing peptide.

Supplied at 0.5 mg/ml in Tris saline, 0.02% sodium azide, pH7.3 with 0.5% bovine serum albumin.

Aliquot and store at -20°C. Minimize freezing and thawing.

Applications Tested

Peptide ELISA: antibody detection limit dilution 1:8000.

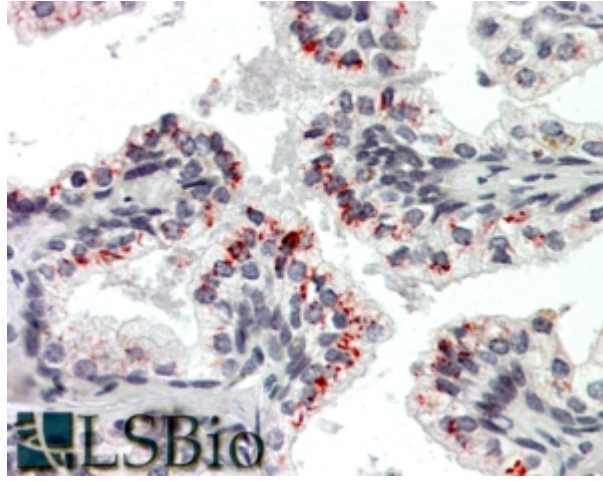
Western blot: Approx 18kDa band observed in lysates of Mouse fetal Brain (calculated MW of 18.9kDa according to Mouse NP_032999.1). Recommended concentration: 0.1-0.3µg/ml.

IHC: In paraffin embedded Human Prostate shows distinct staining at the base of the glands. Recommended concentration, 3-5µg/ml.

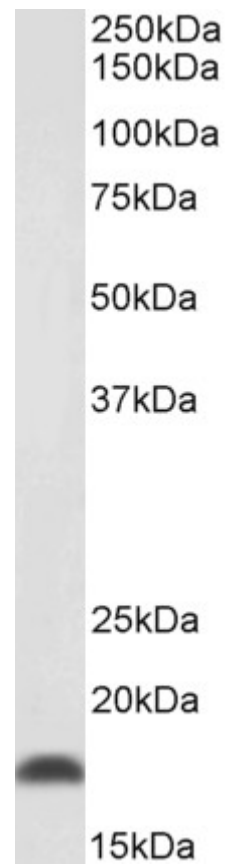
Species Reactivity

Tested: Human, Mouse

Expected from sequence similarity: Human, Mouse, Rat



EB08421 (3.8 μ g/ml) staining of paraffin embedded Human Prostate. Steamed antigen retrieval with citrate buffer pH 6, AP-staining.



EB08421 (0.1 μ g/ml) staining of Mouse fetal Brain (35 μ g protein in RIPA buffer). Primary incubation was 1 hour. Detected by chemiluminescence.