

## UK Office

### Everest Biotech Ltd

Cherwell Innovation Centre  
77 Heyford Park  
Upper Heyford  
Oxfordshire  
OX25 5HD  
UK

Enquiries:

[info@everestbiotech.com](mailto:info@everestbiotech.com)

Sales:

[sales@everestbiotech.com](mailto:sales@everestbiotech.com)

Tech support:

[support@everestbiotech.com](mailto:support@everestbiotech.com)

Tel: +44 (0)1869 238326

[www.everestbiotech.com](http://www.everestbiotech.com)

**Research Use Only. Not for  
diagnostic or therapeutic use.**

## EB09595 - Goat Anti-Pleiotrophin / PTN Antibody

Size: 100µg specific antibody in 200µl



### Target Protein

**Principal Names:** PTN, pleiotrophin, HARP, HBGF8, HBNF, NEGF1, heparin affinity regulatory protein, heparin binding growth factor 8, heparin-binding growth-associated molecule, neurite growth-promoting factor 1, pleiotrophin (heparin binding growth factor 8, neurite growth-promoting factor 1)

**Official Symbol:** PTN

**Accession Number(s):** NP\_002816.1

**Human GeneID(s):** [5764](#)

**Non-Human GeneID(s):** 19242 (mouse), 24924 (rat)

### Immunogen

Peptide with sequence CGKLTQPKPQAESKK, from the internal region (near C Terminus) of the protein sequence according to NP\_002816.1.

Please note the [peptide](#) is available for sale.

### Purification and Storage

Purified from goat serum by ammonium sulphate precipitation followed by antigen affinity chromatography using the immunizing peptide.

Supplied at 0.5 mg/ml in Tris saline, 0.02% sodium azide, pH7.3 with 0.5% bovine serum albumin.

Aliquot and store at -20°C. Minimize freezing and thawing.

### Applications Tested

**Peptide ELISA:** antibody detection limit dilution 1:64000.

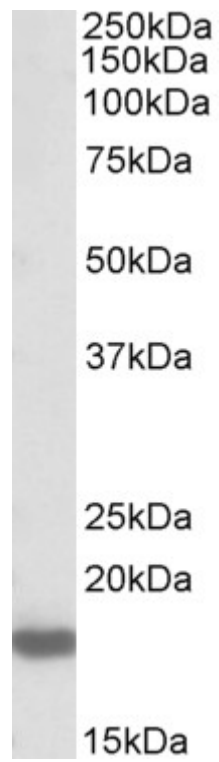
**Western blot:** Approx 18kDa band observed in Mouse and Rat Brain lysates (calculated MW of 18.9kDa according to Human NP\_002816.1 and to Mouse NP\_032999.1).

Recommended concentration: 0.1-0.3µg/ml.

### Species Reactivity

**Tested:** Human

**Expected from sequence similarity:** Human, Mouse, Rat, Dog, Cow, Pig



EB09595 (0.3 $\mu$ g/ml) staining of Rat Brain lysate (35 $\mu$ g protein in RIPA buffer). Primary incubation was 1 hour.  
Detected by chemiluminescence.