



## UK Office

### Everest Biotech Ltd

Cherwell Innovation Centre  
77 Heyford Park  
Upper Heyford  
Oxfordshire  
OX25 5HD  
UK

Enquiries:

[info@everestbiotech.com](mailto:info@everestbiotech.com)

Sales:

[sales@everestbiotech.com](mailto:sales@everestbiotech.com)

Tech support:

[support@everestbiotech.com](mailto:support@everestbiotech.com)

Tel: +44 (0)1869 238326

[www.everestbiotech.com](http://www.everestbiotech.com)

**Research Use Only. Not for  
diagnostic or therapeutic use.**

## EB09599 - Goat Anti-PLGF Antibody

Size: 100µg specific antibody in 200µl



### Target Protein

**Principal Names:** PGF, placental growth factor, D12S1900, PGFL, PLGF, PIGF-2, SHGC-10760, placenta growth factor, placental growth factor, vascular endothelial growth factor-related protein, placental growth factor-like

**Official Symbol:** PGF

**Accession Number(s):** NP\_002623.2; NP\_001193941.1; NP\_001280572.1

**Human GeneID(s):** [5228](#)

### Immunogen

Peptide with sequence C-NVTMQLLKIRSGDR, from the internal region of the protein sequence according to NP\_002623.2; NP\_001193941.1; NP\_001280572.1.

Please note the [peptide](#) is available for sale.

### Purification and Storage

Purified from goat serum by ammonium sulphate precipitation followed by antigen affinity chromatography using the immunizing peptide.

Supplied at 0.5 mg/ml in Tris saline, 0.02% sodium azide, pH7.3 with 0.5% bovine serum albumin.

Aliquot and store at -20°C. Minimize freezing and thawing.

### Applications Tested

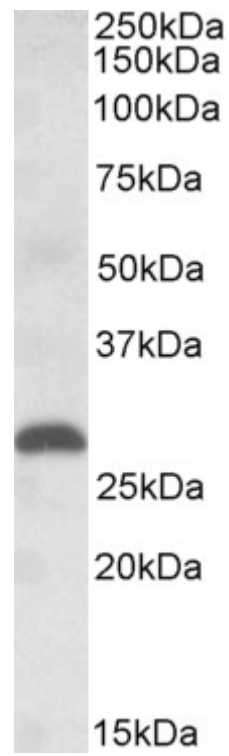
**Peptide ELISA:** antibody detection limit dilution 1:1000.

**Western blot:** Approx 28kDa band observed in Human Placenta lysates (calculated MW of 19.3kDa according to NP\_002623.2). The observed molecular weight corresponds to the glycosylated form. Recommended concentration: 1-3µg/ml.

### Species Reactivity

**Tested:** Human

**Expected from sequence similarity:** Human, Pig



EB09599 (1 $\mu$ g/ml) staining of Human Placenta lysate (35 $\mu$ g protein in RIPA buffer). Primary incubation was 1 hour. Detected by chemiluminescence.