



## UK Office

### Everest Biotech Ltd

Cherwell Innovation Centre  
77 Heyford Park  
Upper Heyford  
Oxfordshire  
OX25 5HD  
UK

Enquiries:

[info@everestbiotech.com](mailto:info@everestbiotech.com)

Sales:

[sales@everestbiotech.com](mailto:sales@everestbiotech.com)

Tech support:

[support@everestbiotech.com](mailto:support@everestbiotech.com)

Tel: +44 (0)1869 238326

Fax: +44 (0)1869 238327

## US Office

### Everest Biotech c/o Abcore

405 Maple Street, Suite A106  
Ramona,  
CA 92065  
USA

Inquiries:

[info@everestbiotech.com](mailto:info@everestbiotech.com)

Sales:

[usasales@everestbiotech.com](mailto:usasales@everestbiotech.com)

Tech support:

[support@everestbiotech.com](mailto:support@everestbiotech.com)

Tel: 888-320-4628 (toll-free)

Fax: 888-841-9041

[www.everestbiotech.com](http://www.everestbiotech.com)

**Research Use Only. Not for  
diagnostic or therapeutic use.**

## EB10591 - Goat Anti-POLDIP2 Antibody

Size: 100µg specific antibody in 200µl



### Target Protein

**Principal Names:** POLDIP2, polymerase (DNA-directed), delta interacting protein 2, DKFZp586F1524, PDIP38, POLD4, 38 kDa DNA polymerase delta interaction protein, p38, polymerase delta interacting protein 38, polymerase delta-interacting protein 2

**Official Symbol:** POLDIP2

**Accession Number(s):** NP\_056399.1

**Human GeneID(s):** [26073](#)

**Non-Human GeneID(s):** 67811 (mouse)

### Immunogen

Peptide with sequence KTHTYYQVLIDARDC, from the internal region of the protein sequence according to NP\_056399.1.

Please note the [peptide](#) is available for sale.

### Purification and Storage

Purified from goat serum by ammonium sulphate precipitation followed by antigen affinity chromatography using the immunizing peptide.

Supplied at 0.5 mg/ml in Tris saline, 0.02% sodium azide, pH7.3 with 0.5% bovine serum albumin.

Aliquot and store at -20°C. Minimize freezing and thawing.

### Applications Tested

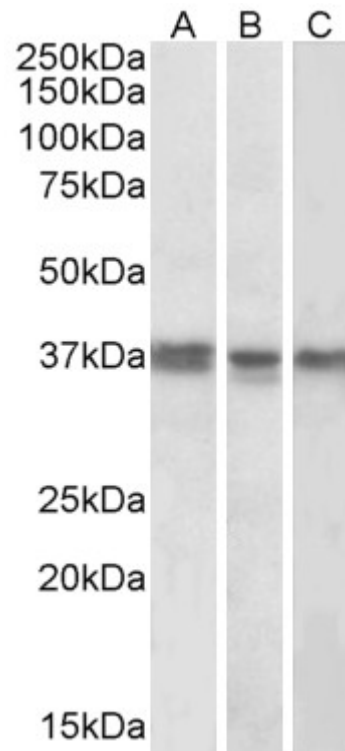
**Peptide ELISA:** antibody detection limit dilution 1:8000.

**Western blot:** Approx 37kDa band observed in lysates of cell lines K562 and MCF7 and of Mouse Liver (calculated MW of 42.0kDa according to NP\_056399.1). Approx 37kDa band observed in Rat Vascular Smooth Muscle Cells lysates. The band diminished upon siRNA knock down. Recommended concentration: 1-3µg/ml.

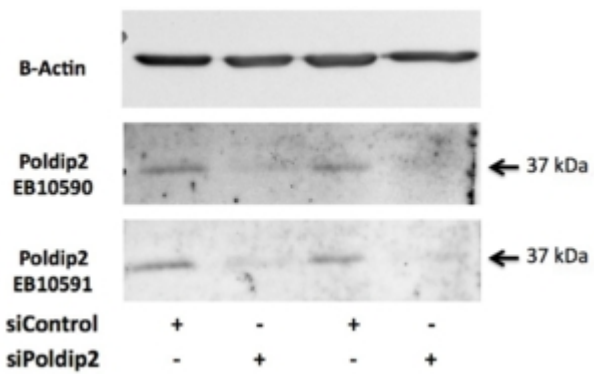
### Species Reactivity

**Tested:** Human, Mouse, Rat

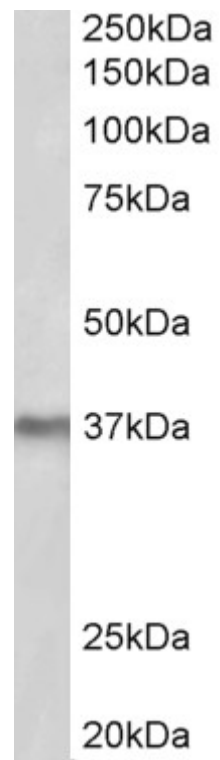
**Expected from sequence similarity:** Human, Rat, Dog, Cow



EB10591 (1µg/ml) staining of K562 (A), MCF7 (B) and Mouse Liver (C) lysates (35µg protein in RIPA buffer). Primary incubation was overnight at 4C. Detected by chemiluminescence.



EB10590 (0.5µg/ml) staining of Rat VSMC lysate (35µg protein in RIPA buffer). Primary incubation was overnight at 4C. Detected by chemiluminescence. Data provided by Everest Grant winner Dr. B. Lassegue, Emory University, Atlanta, USA



EB10591 (2 $\mu$ g/ml) staining of Mouse Liver lysate (35 $\mu$ g protein in RIPA buffer). Primary incubation was overnight at 4C. Detected by chemiluminescence.