

Research Use Only. Not for diagnostic or therapeutic use.

Storage: For long-term storage keep aliquots at -20°C. (Store no longer than 12 months at 4°C). Minimize freezing and thawing.

EB06206 - Goat Anti-POLL / POLKappa Antibody

Size: 100µg specific antibody in 200µl



Target Protein

Principal Names: pol lambda, pol beta2, OTTHUMP00000020323, DNA-directed DNA polymerase lambda, DNA polymerase lamda2, DNA polymerase kappa (DNA polymerase beta-N), DNA polymerase beta-2, POLKAPPA, FLJ46002, BETAN, RP11-529I10.1, DNA polymerase kappa (DNA polymerase beta-N), polymerase (DNA-directed), lambda, polymerase (DNA directed), lambda, POL-KAPPA, BETA-N, POLL

Official Symbol: POLL

Accession Number(s): NP_037406.1

Human GeneID(s): [27343](#)

Non-Human GeneID(s): 56626 (mouse)

Important Comments: It has been brought to our attention that this product may crossreact with Pol beta (NP_002681), an evolutionarily related polymerase with a predicted size of 39 kDa. The overall % of identity is not very high (about 32% in the core) but considering only the peptide that we used as immunogen the two share the sequence YREP**R** at the C-terminus. Further the protein structures appear to be very similar in this region.

Immunogen

Peptide with sequence C-LGLPYREPAERDW, from the C Terminus of the protein sequence according to NP_037406.1.

Please note the [peptide](#) is available for sale.

Purification and Storage

Purified from goat serum by ammonium sulphate precipitation followed by antigen affinity chromatography using the immunizing peptide.

Supplied at 0.5 mg/ml in Tris saline, 0.02% sodium azide, pH7.3 with 0.5% bovine serum albumin.

Aliquot and store at -20°C. Minimize freezing and thawing.

Applications Tested

Peptide ELISA: antibody detection limit dilution 1:32000.

Western blot: Preliminary experiments gave a band at approx 40kDa in Human Liver and HepG2 extracts at 1µg/ml. Please note that currently we cannot find an explanation in the literature for the band we observe given the predicted size of approx. 66Kda according to NP_037406 (however please see comment above about Pol beta). We would appreciate any feedback from people in the field - have any results been reported with other antibodies/lysates? Have any splice variants/modified forms been reported?

IHC: In paraffin embedded Human Small Intestine shows nuclear staining of enterocytes and of most cells in the lamina propria. Recommended concentration, 5-10µg/ml.

Species Reactivity

Tested: Human

Expected from sequence similarity: Human, Mouse

Specific Reference

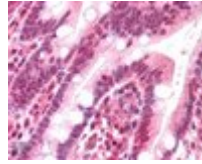
The goat polyclonal antibody used in this paper was manufactured by us:

Selak N, Bachrati CZ, Shevelev I, Dietschy T, van Loon B, Jacob A, Hübscher U, Hoheisel JD, Hickson ID, Stagljar I.

The Bloom's syndrome helicase (BLM) interacts physically and functionally with p12, the smallest subunit of human DNA polymerase delta.

Nucleic Acids Res. 2008 Sep;36(16):5166-79.

PMID: 18682526



EB06206 (5µg/ml) staining of paraffin embedded Human Small Intestine. Steamed antigen retrieval with citrate buffer pH 6, AP-staining.