



UK Office

Everest Biotech Ltd

Cherwell Innovation Centre
77 Heyford Park
Upper Heyford
Oxfordshire
OX25 5HD
UK

Enquiries:

info@everestbiotech.com

Sales:

sales@everestbiotech.com

Tech support:

support@everestbiotech.com

Tel: +44 (0)1869 238326

Fax: +44 (0)1869 238327

US Office

Everest Biotech c/o Abcore

405 Maple Street, Suite A106
Ramona,
CA 92065
USA

Inquiries:

info@everestbiotech.com

Sales:

usasales@everestbiotech.com

Tech support:

support@everestbiotech.com

Tel: 888-320-4628 (toll-free)

Fax: 888-841-9041

www.everestbiotech.com

**Research Use Only. Not for
diagnostic or therapeutic use.**

EB12012 - Goat Anti-polo-like kinase 3 (aa320-333) Antibody

Size: 100µg specific antibody in 200µl



Target Protein

Principal Names: PLK3, polo-like kinase 3, CNK, FNK, PRK, FGF-inducible kinase, PLK-3, cytokine-inducible kinase, cytokine-inducible serine/threonine-protein kinase, proliferation-related kinase, serine/threonine-protein kinase PLK3

Official Symbol: PLK3

Accession Number(s): NP_004064.2

Human GeneID(s): [1263](#)

Immunogen

Peptide with sequence PDRLPISSCVTPD, from the internal region of the protein sequence according to NP_004064.2.

Please note the [peptide](#) is available for sale.

Purification and Storage

Purified from goat serum by ammonium sulphate precipitation followed by antigen affinity chromatography using the immunizing peptide.

Supplied at 0.5 mg/ml in Tris saline, 0.02% sodium azide, pH7.3 with 0.5% bovine serum albumin.

Aliquot and store at -20°C. Minimize freezing and thawing.

Applications Tested

Peptide ELISA: antibody detection limit dilution 1:128000.

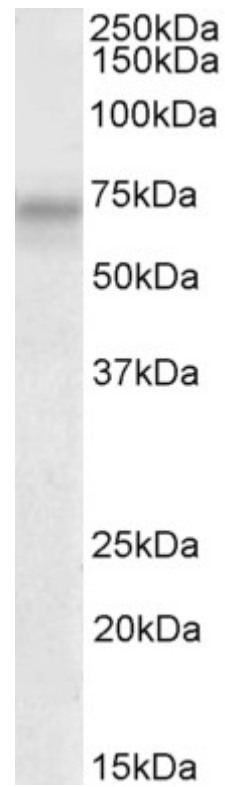
Western blot: Approx 70kDa band observed in lysates of cell line HeLa (calculated MW of 71.6kDa according to NP_004064.2). Recommended concentration: 1-3µg/ml. Primary incubation 1 hour at room temperature.

IHC: In paraffin embedded Human Kidney shows vesicular staining in the cytoplasm of collective tubules. Recommended concentration, 5-10µg/ml.

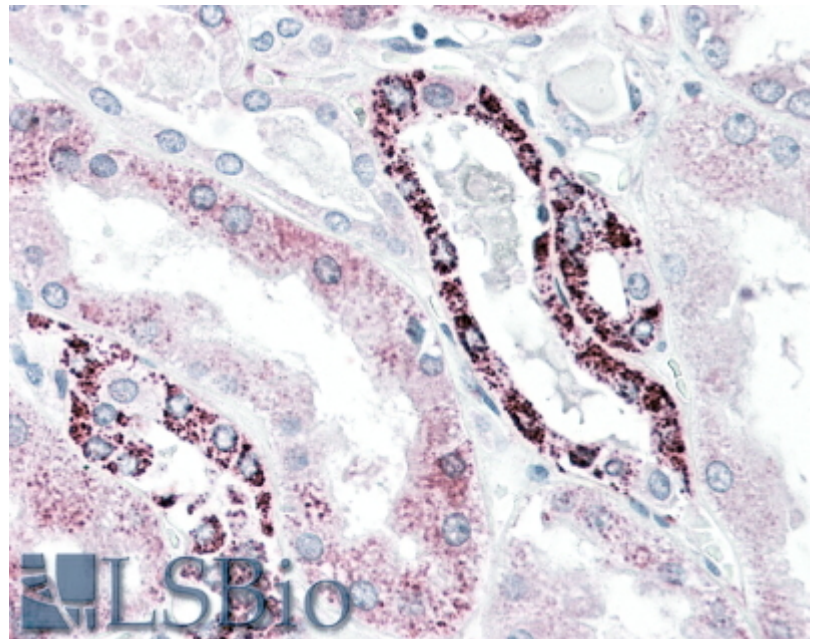
Species Reactivity

Tested: Human

Expected from sequence similarity: Human



EB12012 (2 μ g/ml) staining of HeLa lysate (35 μ g protein in RIPA buffer). Detected by chemiluminescence.



EB12012 (5 μ g/ml) staining of paraffin embedded Human Kidney. Steamed antigen retrieval with citrate buffer pH 6, AP-staining.