

UK Office

Everest Biotech Ltd

Cherwell Innovation Centre
77 Heyford Park
Upper Heyford
Oxfordshire
OX25 5HD
UK

Enquiries:

info@everestbiotech.com

Sales:

sales@everestbiotech.com

Tech support:

support@everestbiotech.com

Tel: +44 (0)1869 238326

www.everestbiotech.com

**Research Use Only. Not for
diagnostic or therapeutic use.**

EB09533 - Goat Anti-POLR2G Antibody

Size: 100µg specific antibody in 200µl



Target Protein

Principal Names: POLR2G, polymerase (RNA) II (DNA directed) polypeptide G, MGC138367, MGC138369, RPB7, hRPB19, hsRPB7, DNA directed RNA polymerase II 19 kda polypeptide, DNA directed RNA polymerase II polypeptide G, RNA polymerase II seventh subunit

Official Symbol: POLR2G

Accession Number(s): NP_002687.1

Human GeneID(s): [5436](#)

Immunogen

Peptide with sequence EFDPN SNP CYK, from the internal region of the protein sequence according to NP_002687.1.

Please note the [peptide](#) is available for sale.

Purification and Storage

Purified from goat serum by ammonium sulphate precipitation followed by antigen affinity chromatography using the immunizing peptide.

Supplied at 0.5 mg/ml in Tris saline, 0.02% sodium azide, pH7.3 with 0.5% bovine serum albumin.

Aliquot and store at -20°C. Minimize freezing and thawing.

Applications Tested

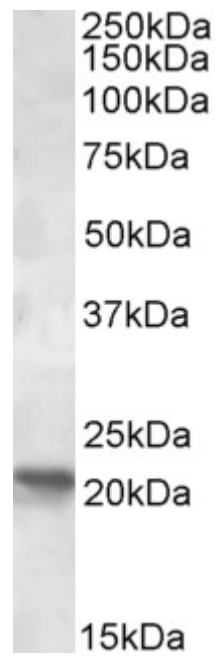
Peptide ELISA: antibody detection limit dilution 1:1000.

Western blot: Approx 21kDa band observed in Human Brain (Cerebellum) lysates (calculated MW of 19.3kDa according to NP_002687.1). Recommended concentration: 1-3µg/ml.

Species Reactivity

Tested: Human

Expected from sequence similarity: Human, Mouse, Rat, Sheep



Approx 21kDa band observed in Human Brain (Cerebellum) lysates (calculated MW of 19.3kDa according to NP_002687.1). Recommended concentration: 1-3 μ g/ml.