



UK Office

Everest Biotech Ltd

Cherwell Innovation Centre
77 Heyford Park
Upper Heyford
Oxfordshire
OX25 5HD
UK

Enquiries:

info@everestbiotech.com

Sales:

sales@everestbiotech.com

Tech support:

support@everestbiotech.com

Tel: +44 (0)1869 238326

Fax: +44 (0)1869 238327

US Office

Everest Biotech c/o Abcore

405 Maple Street, Suite A106
Ramona,
CA 92065
USA

Inquiries:

info@everestbiotech.com

Sales:

usasales@everestbiotech.com

Tech support:

support@everestbiotech.com

Tel: 888-320-4628 (toll-free)

Fax: 888-841-9041

www.everestbiotech.com

**Research Use Only. Not for
diagnostic or therapeutic use.**

EB10032 - Goat Anti-POU4F2 Antibody

Size: 100µg specific antibody in 200µl



Target Protein

Principal Names: BRN3.2, BRN3B, Brn-3b, Brn3b POU domain transcription factor, POU class 4 homeobox 2, POU domain class 4 transcription factor 2, POU domain protein, POU domain, class 4, transcription factor 2, POU4F2

Official Symbol: POU4F2

Accession Number(s): NP_004566.2

Human GeneID(s): [5458](#)

Important Comments: This antibody is not expected to cross-react to the similar POU4F3 (GeneID 5459)

Immunogen

Peptide with sequence HGLPSHMGCMDSVD, from the internal region of the protein sequence according to NP_004566.2.

Please note the [peptide](#) is available for sale.

Purification and Storage

Purified from goat serum by ammonium sulphate precipitation followed by antigen affinity chromatography using the immunizing peptide.

Supplied at 0.5 mg/ml in Tris saline, 0.02% sodium azide, pH7.3 with 0.5% bovine serum albumin.

Aliquot and store at -20°C. Minimize freezing and thawing.

Applications Tested

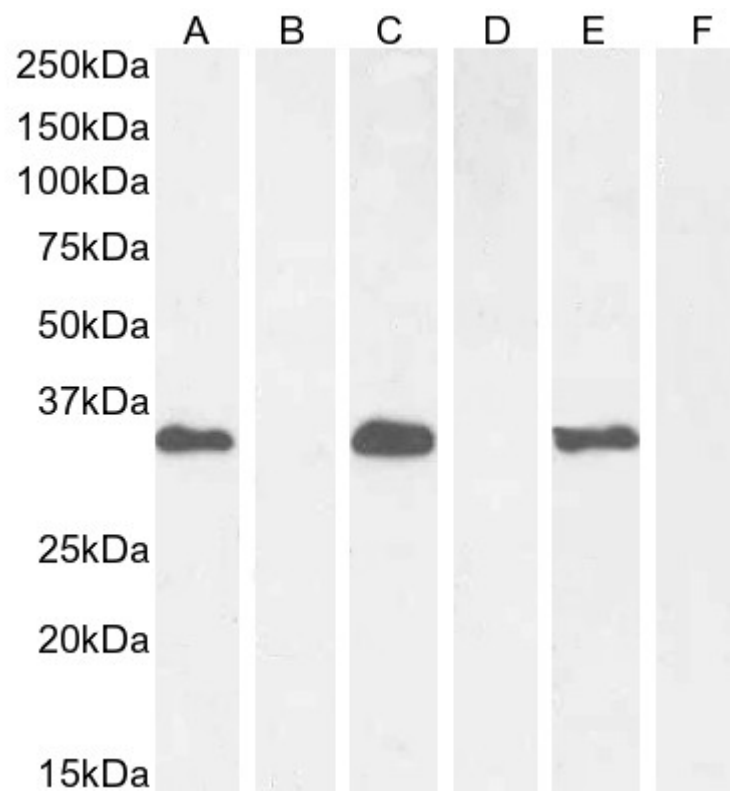
Peptide ELISA: antibody detection limit dilution 1:32000.

Western blot: Approx. 35kDa band observed in Human, Mouse and Rat Brain lysates (calculated MW of 43.1kDa according to Human NP_004566.2,). This band was successfully blocked by incubation with the immunizing peptide. Recommended concentration: 1-3µg/ml. Primary incubation 1 hour at room temperature.

Species Reactivity

Tested: Human, Mouse, Rat

Expected from sequence similarity: Human, Mouse, Rat, Dog, Cow



EB10032 (1µg/ml) staining of Human Cerebellum (A) + peptide (B), Mouse Brain (C) + peptide (D), and Rat Brain (E) + peptide (F) lysate (35µg protein in RIPA buffer). Detected by chemiluminescence.