



## UK Office

### Everest Biotech Ltd

Cherwell Innovation Centre  
77 Heyford Park  
Upper Heyford  
Oxfordshire  
OX25 5HD  
UK

Enquiries:

[info@everestbiotech.com](mailto:info@everestbiotech.com)

Sales:

[sales@everestbiotech.com](mailto:sales@everestbiotech.com)

Tech support:

[support@everestbiotech.com](mailto:support@everestbiotech.com)

Tel: +44 (0)1869 238326

Fax: +44 (0)1869 238327

## US Office

### Everest Biotech c/o Abcore

405 Maple Street, Suite A106  
Ramona,  
CA 92065  
USA

Inquiries:

[info@everestbiotech.com](mailto:info@everestbiotech.com)

Sales:

[usasales@everestbiotech.com](mailto:usasales@everestbiotech.com)

Tech support:

[support@everestbiotech.com](mailto:support@everestbiotech.com)

Tel: 888-320-4628 (toll-free)

Fax: 888-841-9041

[www.everestbiotech.com](http://www.everestbiotech.com)

**Research Use Only. Not for  
diagnostic or therapeutic use.**

## EB06717 - Goat Anti-PP2A / PPP2R1A Antibody

Size: 100µg specific antibody in 200µl



### Target Protein

**Principal Names:** PPP2R1A, MGC786, protein phosphatase 2 (formerly 2A), regulatory subunit A (PR 65), alpha isoform, PP2A, subunit A, R1-alpha isoform, PP2A, subunit A, PR65-alpha isoform, medium tumor antigen-associated 61 KDA protein, Serine/threonine protein phosphatase 2A, 65 KDA regulatory subunit A, alpha isoform, protein phosphatase 2 (formerly 2A), regulatory subunit A, alpha isoform, PR65A, alpha isoform of regulatory subunit A, protein phosphatase 2, medium tumor antigen-associated 61 KDA protein, protein phosphatase 2 (formerly 2A), regulatory subunit A (PR 65), alpha isoform

**Official Symbol:** PPP2R1A

**Accession Number(s):** NP\_055040.2

**Human GeneID(s):** [5518](#)

### Immunogen

Peptide with sequence C-KYFAQEALTVLSLA, from the C Terminus of the protein sequence according to NP\_055040.2.

Please note the [peptide](#) is available for sale.

### Purification and Storage

Purified from goat serum by ammonium sulphate precipitation followed by antigen affinity chromatography using the immunizing peptide.

Supplied at 0.5 mg/ml in Tris saline, 0.02% sodium azide, pH7.3 with 0.5% bovine serum albumin.

Aliquot and store at -20°C. Minimize freezing and thawing.

### Applications Tested

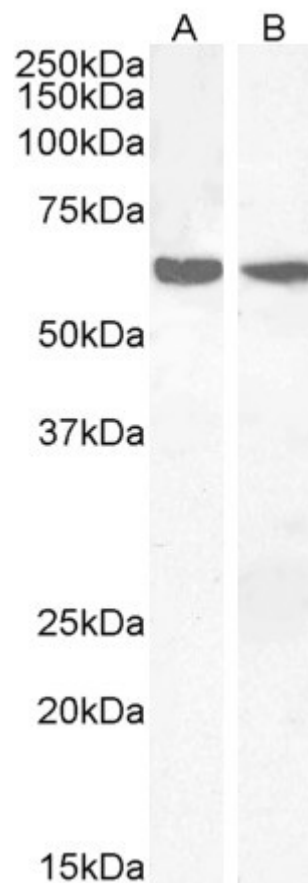
**Peptide ELISA:** antibody detection limit dilution 1:4000.

**Western blot:** Approx 60-65kDa band observed in Human Thymus and Human Lymph node lysates (calculated MW of 65.3kDa according to NP\_055040.2). Recommended concentration: 2-6µg/ml.

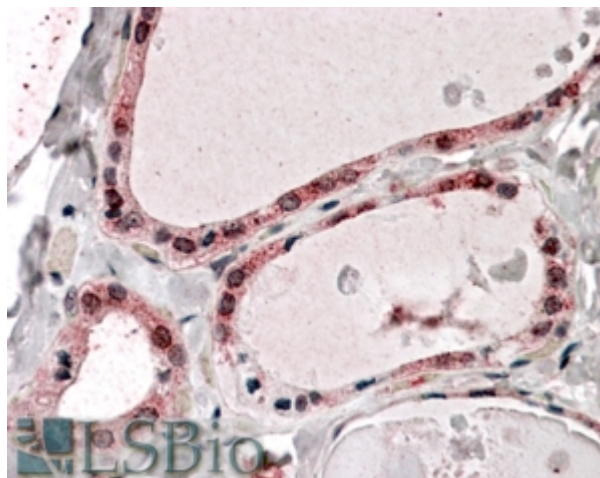
### Species Reactivity

**Tested:** Human

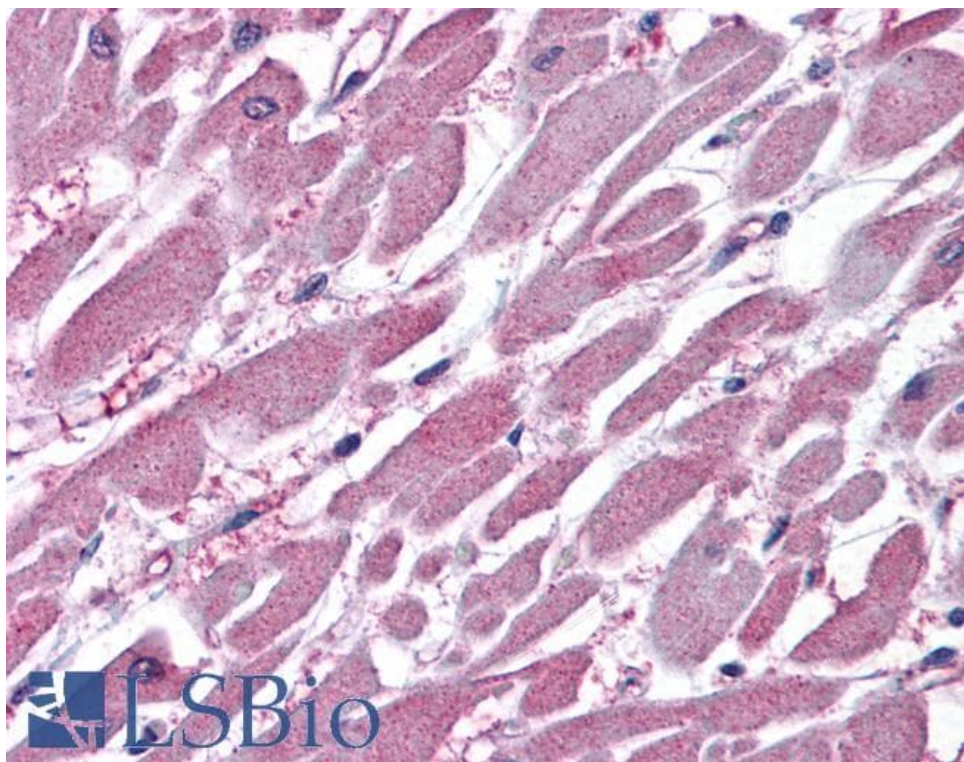
**Expected from sequence similarity:** Human, Mouse, Rat, Dog, Pig, Cow



EB06717 (2 $\mu$ g/ml) staining of Human Thymus (A) and Human Lymph node (B) lysates (35 $\mu$ g protein in RIPA buffer). Primary incubation was 1 hour. Detected by chemiluminescence.



EB06717 (3.75 $\mu$ g/ml) staining of paraffin embedded Human Thyroid Gland. Steamed antigen retrieval with citrate buffer pH 6, AP-staining. **This data is from a previous batch, not on sale.**



EB06717 (3.75µg/ml) staining of paraffin embedded Human Heart. Steamed antigen retrieval with citrate buffer pH 6, AP-staining. **This data is from a previous batch, not on sale.**